

## LIST OF VALID AIP SUPPLEMENTS

NUMBER	FIR/AERODROME (LOCATION) STATE	SUBJECT
01/25	Terrance B. Lettsome (TUPJ)	Restrictions for Use of British Virgin Islands Airspace
31/24	Canouan Airport (TVSC)	TVSC DME 'CAI' CH51X 111.400MHz Unserviceable
30/24	Canouan Airport (TVSC)	TVSC NDB 'CAI' 302.0KHz Unserviceable
29/24	C.J. Lloyd International Airport (TQPF)	Amendments to the Aerodrome data for the C.J. Lloyd International Airport (TQPF)
28/24	Barbuda International Airport (TAPB)	Revision to the Aerodrome data for the Barbuda International Airport (TAPB)
27/24	V.C. Bird (TAPA)	Establishment of Area Chart – ICAO V.C. Bird TMA
26/24	Piarco (TTPP) and A.N.R. Robinson (TTCP)	TTPP RNAV (GNSS) RWY 10, TTPP RNAV (GNSS) RWY 28, TTCP RNAV (GNSS) RWY 11 and TTCP RNAV (GNSS) RWY 29 Charts
25/24	Maurice Bishop (TGPY)	Installation of Passenger Boarding Bridge at Maurice Bishop International Airport
24/24	Piarco (TTPP)	Model Aircraft Display
21/24	Piarco FIR (TTZP)	Interim Routings to be utilized within the Piarco FIR due to the removal of the UA550, UA551 and UA561 Routes
19/24	Douglas Charles (TDPD)	Extension of RWY 09/27 at the Douglas Charles Airport
18/24	Piarco International Airport (TTPP)	NDB 'TRI' Unserviceable
17/24	Terrance B. Lettsome (TUPJ)	Amendments to the Phraseology of the Departure Instructions at the Terrance B. Lettsome International Airport
15/24	Piarco FIR (TTZP)	Establishment of Waypoint CAIRN on the Common Boundary between the Pointe-a-Pitre (Guadeloupe) Terminal Control Area (TMA) and the Piarco Flight Information Region (TTZP)
14/24	St. Vincent and the Grenadines (TVSA, TVSB, TVSC, and TVSU)	Airport Service Charge
07/24	John A. Osborne (TRPG)	Airport Restriction at John A. Osborne International Airport
06/24	Douglas Charles (TDPD)	Change in Aerodrome Operating Hours at Douglas Charles International Airport
05/24	Clayton J. Lloyd (TQPF)	Parking Stand Discontinued at Clayton J. Lloyd International Airport
04/24	Clayton J. Lloyd (TQPF)	Airport Restriction at Clayton J. Lloyd International Airport

LIST LAST UPDATED 03 JANUARY 2025

INTENTIONALLY LEFT BLANK

**PIARCO INTERNATIONAL NOTAM OFFICE****AIP  
SUPPLEMENT**

Tele: 1 868 669-4128  
1 868 668-8222 ext 2510  
FAX: 1 868 669 1716  
AFTN: TTPPYNYX  
Email:aimpublication@caa.gov.tt

TRINIDAD & TOBAGO  
CIVIL AVIATION AUTHORITY,  
P.O. BOX 2163, NATIONAL MAIL CENTRE, PIARCO  
REPUBLIC OF TRINIDAD AND TOBAGO

01/25  
03 JAN 25

**GEN****01. TERRANCE B. LETTSOME INTERNATIONAL AIRPORT (TUPJ)****RESTRICTIONS FOR USE OF BRITISH VIRGIN ISLANDS AIRSPACE****Effective: 250104 to 260104**

The United Kingdom Department for Transport has issued a regulation indicating that no aircraft that is owned, chartered or operated by a person connected with Russia, or which is registered in Russia, shall fly in the British Virgin Islands airspace, including in the airspace above the territorial sea.

This regulation does not apply to any aircraft flying by the permission of the UK Secretary for Transport.

Permission is available from Air Safety Support International at [enquiries@airsafety.aero](mailto:enquiries@airsafety.aero)

**END**

Intentionally left blank

**PIARCO INTERNATIONAL NOTAM OFFICE****AIP  
SUPPLEMENT**

Tele: 1 868 669-4128  
1 868 668-8222 ext 2510  
FAX: 1 868 669 1716  
AFTN: TTPPYNYX  
Email:aimpublication@caa.gov.tt

TRINIDAD & TOBAGO  
CIVIL AVIATION AUTHORITY,  
P.O. BOX 2163, NATIONAL MAIL CENTRE,  
PIARCO  
REPUBLIC OF TRINIDAD AND TOBAGO

**31/24**  
**27 DEC 24**

**AD****31. CANOUAN AIRPORT (TVSC)****TVSC DME 'CAI' CH51X 111.400MHz UNSERVICEABLE****Effective: 241227 to 250630**

TVSC DME 'CAI' CH51X 111.400MHz unserviceable.

As a result:

- NDB Z RWY 13 approach unavailable
- Segment CAI to AMULA on ATS route R893, unavailable

Please refer to Eastern Caribbean AIP page AD 2.9-3-8, AD 2.9-3-15 and AD 2.9-3-16.

AIP SUP 31/24 replaces AIP SUP 23/24.

**END**

Intentionally left blank

**PIARCO INTERNATIONAL NOTAM OFFICE****AIP  
SUPPLEMENT**

Tele: 1 868 669-4128  
1 868 668-8222 ext 2510  
FAX: 1 868 669 1716  
AFTN: TTPPYNYX  
Email:aimpublication@caa.gov.tt

TRINIDAD & TOBAGO  
CIVIL AVIATION AUTHORITY,  
P.O. BOX 2163, NATIONAL MAIL CENTRE,  
PIARCO  
REPUBLIC OF TRINIDAD AND TOBAGO

**30/24**  
**24 DEC 24**

**AD****30. CANOUAN AIRPORT (TVSC)****TVSC NDB 'CAI' 302.0KHZ UNSERVICEABLE****Effective: 241224 to 250630**

TVSC NDB 'CAI' 302.0KHz unserviceable.

As a result, the following instrument approaches are unavailable:

- NDB Z RWY 13
- NDB Y RWY 13 (Cat A/B)
- NDB X RWY 13 (Cat C)

Please refer to Eastern Caribbean AIP pages AD 2.9-3-8, AD 2.9-3-15, AD 2.9-3-16, AD 2.9-3-17 and AD 2.9-3-18.

AIP SUP 30/24 replaces AIP SUP 22/24.

**END**

Intentionally left blank



**PIARCO INTERNATIONAL NOTAM OFFICE****AIP  
SUPPLEMENT**

Tele: 1 868 669-4128  
1 868 668-8222 ext 2510  
FAX: 1 868 669 1716  
AFTN: TTPPYNYX  
Email:aimpublication@caa.gov.tt

TRINIDAD & TOBAGO  
CIVIL AVIATION AUTHORITY,  
P.O. BOX 2163, NATIONAL MAIL CENTRE,  
PIARCO  
REPUBLIC OF TRINIDAD AND TOBAGO

**29/24**  
**16 DEC 24**

**AD****29. C.J. LLOYD INTERNATIONAL AIRPORT (TQPF)****Amendments to the Aerodrome data for the C.J. Lloyd International Airport****Effective: 241216 to PERM**

The information in the following attachments have been updated:

- Attachment A - Update to data pages;
- Attachment B - Update to Aerodrome Chart - ICAO.

**END**

Intentionally left blank

# ATTACHMENT A

## TQPF AD 2.8 APRONS, TAXIWAYS AND CHECK LOCATIONS DATA

1	Apron surface and strength	<b>Apron Main:</b> Type of surface: Asphalt Strength: PCR 189/F/B/X/T
		<b>Apron Main Northeast:</b> Type of surface: Concrete Strength: PCR 564/R/B/W/T
		<b>Apron West:</b> Type of surface: Concrete Strength: PCR 263/R/D/Y/T
		<b>Cargo Apron:</b> Type of Surface: Concrete Strength: PCR 610/R/B/W/T
2	Taxiway width, surface and strength	<b>TWY A</b> Width: 18.3M Type of surface: Concrete Strength: PCR 263/R/D/Y/T
		<b>TWY B</b> Width: 17.3M Type of surface: Asphalt Strength: PCR 260/F/B/X/T
		<b>TWY C</b> Width: 18M Type of surface: Asphalt Strength: PCR 252/F/B/X/T
		<b>TWY D</b> Width: 10.5M Type of surface: Concrete Strength: PCR 485/R/B/W/T
		<b>TWY E</b> Width: 15.75M Type of surface: Concrete Strength: PCR 485/R/B/W/T
3	ACL location and elevation	Location: Apron Elevation: 30.87M/101.25FT
4	VOR Checkpoints	NIL
5	INS Checkpoints	NIL
6	Remarks	NIL

# ATTACHMENT A

## TQPF AD 2.12 RUNWAY PHYSICAL CHARACTERISTICS

Designators RWY NR	TRUE & MAG BRG	Dimensions of RWY (M)	Strength (PCR) and surface of RWY and SWY	THR Coordinates/ RWY End Coordinates THR GUND	THR elevation and highest elevation of TDZ of precision APP RWY	Slope of RWY-SWY
1	2	3	4	5	6	7
11	091° GEO 105° MAG	1664 x 30	PCR 550/F/B/W/T Grooved Asphalt	181217.53N 0630337.08W	THR 36.04M (118.24FT)	Nil
29	271° GEO 285° MAG	1664 x 30	PCR 550/F/B/W/T Grooved Asphalt	181217.03N 0630250.67W	THR 23.65M (77.59FT)	Nil

SWY Dimensions (M)	CWY Dimensions (M)	Strip Dimensions (M)	RESA Dimensions	Location/ description of arresting system	OFZ	Remarks
8	9	10	11	12	13	14
Nil	Nil	Nil	90 x 90	Nil	Nil	Thresholds marked as displaced. Length includes 60M strip and 90M RESA. Grooved Asphalt. Beginning of paved surface 181217.59N 0630342.20W Elev 37.72M (123.75FT)
Nil	Nil	Nil	90 x 90	Nil	Nil	Thresholds marked as displaced. Length includes 60M strip and 90M RESA. Grooved Asphalt. Beginning of paved surface 181216.97N 0630245.55W Elev 21.98M (72.11FT)

# ATTACHMENT B

**AERODROME  
CHART - ICAO**

**ARP 181217.28N 0630313.87W**

**AD ELEVATION 124FT**

**CLAYTON J LLOYD The Valley, Anguilla  
TQPF**

**GUND (Geoid Undulation) =**  
The height of the Geoid (MSL) above the Reference Ellipsoid (WGS84) at the stated position

BEARINGS ARE MAGNETIC  
ELEVATIONS AND HEIGHTS ARE IN FEET

ELEVATIONS IN FEET AMSL	<b>192</b>
HEIGHTS IN FEET ABOVE AD	<b>(68)</b>

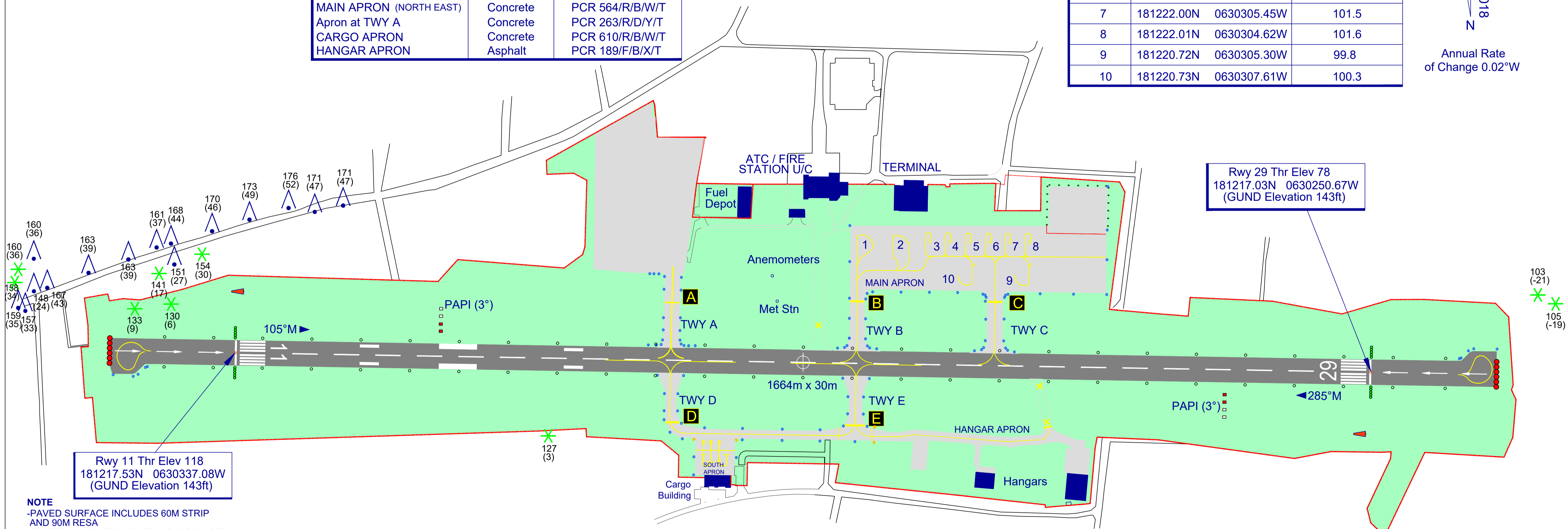
RUNWAY/TAXIWAY/APRON PHYSICAL CHARACTERISTICS		
APRON/RWY	SURFACE	BEARING STRENGTH
RWY 11/29	Groved Asphalt	PCR 550/F/B/W/T
TAXIWAY A	Concrete	PCR 263/R/D/Y/T
TAXIWAY B	Asphalt	PCR 260/F/B/X/T
TAXIWAY C	Asphalt	PCR 252/F/B/X/T
TAXIWAY D	Concrete	PCR 485/R/B/W/T
TAXIWAY E	Concrete	PCR 485/R/B/W/T
MAIN APRON	Asphalt	PCR 189/F/B/X/T
MAIN APRON (NORTH EAST)	Concrete	PCR 564/R/B/W/T
Apron at TWY A	Concrete	PCR 263/R/D/Y/T
CARGO APRON	Concrete	PCR 610/R/B/W/T
HANGAR APRON	Asphalt	PCR 189/F/B/X/T

DECLARED DISTANCES (metres)				
	TORA	TODA	ASDA	LDA
RWY 11	1514	1514	1514	1364
RWY 29	1514	1514	1514	1364

TORA for both runways starts 150m before the Thresholds

MAIN APRON			
STAND	COORDINATE		Elevation AMSL(ft)
1	181221.98N	0630311.01W	102.0
2	181221.98N	0630309.57W	101.7
3	181222.01N	0630308.71W	101.4
4	181222.01N	0630307.89W	101.5
5	181222.01N	0630307.06W	101.8
6	181222.01N	0630306.24W	101.5
7	181222.00N	0630305.45W	101.5
8	181222.01N	0630304.62W	101.6
9	181220.72N	0630305.30W	99.8
10	181220.73N	0630307.61W	100.3

VAR 14.2°W - 2018  
N  
Annual Rate of Change 0.02°W



Rwy 11 Thr Elev 118  
181217.53N 0630337.08W  
(GUND Elevation 143ft)

Rwy 29 Thr Elev 78  
181217.03N 0630250.67W  
(GUND Elevation 143ft)

**NOTE**  
-PAVED SURFACE INCLUDES 60M STRIP AND 90M RESA  
-THRESHOLDS ARE MARKED AS DISPLACED 150M FROM THE BEGINNING OF PAVED SURFACE

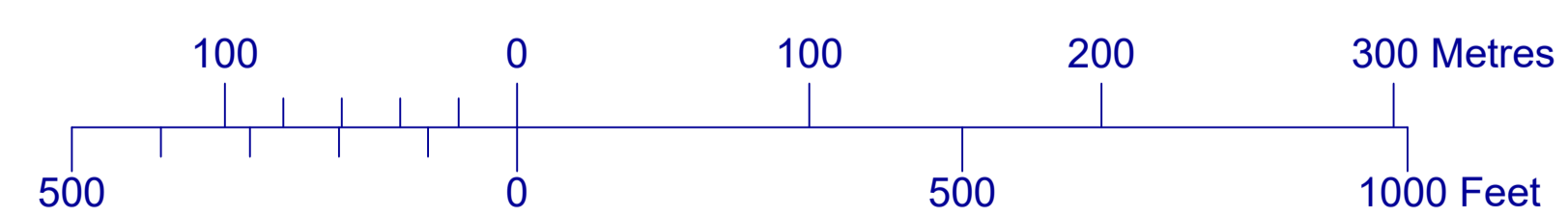
**RESTRICTIONS**  
-CONTROLLED AIRSPACE  
-VISIBILITY EXEMPTED BY DAY  
-INSTRUMENT RESTRICTED BY NIGHT

**CAUTION**  
-NUMEROUS POLES AND ANTENNAS IN VICINITY OF AERODROME

SOUTH APRON		
STAND	COORDINATE	Elevation AMSL(ft)
1	181213.67N 0630317.00W	105.0
2	181213.67N 0630317.93W	104.2
3	181213.43N 0630317.26W	105.1

COM		
TWR	118.5MHz	C.J. Lloyd Tower
LIGHTING		
THR 11/29	Green Wing bars	
RWY 11/29	Hi White Edge 60m spacing, End lights red	
RWY 11	PAPI-L (3°)	
RWY 29	PAPI-L (3°)	
TWY A	Blue edge	
TWY B & C	Blue edge	
TWY D	Blue edge	
TWY E	Blue edge	

LEGEND	
AERODROME REFERENCE POINT (ARP)	⊕
BUILDING	■
WINDSLEEVE	↗
TREE / BUSH	✱
TELEPOLE, AERIAL, POST, ETC	⋈
RWY END LIGHTS	●●●●
RWY THR WING BAR LIGHTS	●●●●
PAPI LIGHTS	□□□□
SRA DELINEATORS	⊖



Intentionally left blank

**PIARCO INTERNATIONAL NOTAM OFFICE****AIP  
SUPPLEMENT**

Tele: 1 868 669-4128  
1 868 668-8222 ext 2510  
FAX: 1 868 669 1716  
AFTN: TTPPYNYX  
Email:aimpublication@caa.gov.tt

TRINIDAD & TOBAGO  
CIVIL AVIATION AUTHORITY,  
P.O. BOX 2163, NATIONAL MAIL CENTRE,  
PIARCO  
REPUBLIC OF TRINIDAD AND TOBAGO

**28/24**  
**05 DEC 24**

**AD****28. BARBUDA INTERNATIONAL AIRPORT (TAPB)****Revision to the Aerodrome data for the Barbuda International Airport (TAPB)****Effective: 241205 to PERM**

Attachment A contains the updated Aerodrome data for the new Barbuda International Airport (TAPB). New information is identified by a change bar symbol located at the left margin where the change has occurred.

The following subsections have been amended:

- TAPB AD 2.2 Aerodrome Geographical and Administrative Data;
- TAPB AD 2.3 Operational Hours;
- TAPB AD 2.4 Handling Services and Facilities;
- TAPB AD 2.17 ATS Airspace;
- TAPB AD 2.18 ATS Communication Facilities;
- TAPB AD 2.19 Radio Navigation and Landing Aids;
- TAPB AD 2.20 Local Traffic Regulations;
- TAPB AD 2.22 Flight Procedures.

AIP SUP 28/24 replaces AIRAC AIP SUP 20/24.

**END**

Intentionally left blank



# ATTACHMENT A

## AD 2. AERODROMES

### TAPB AD 2.1 AERODROME LOCATION INDICATOR AND NAME

#### TAPB - BARBUDA/Barbuda - INTL

### TAPB AD 2.2 AERODROME GEOGRAPHICAL AND ADMINISTRATIVE DATA

1	ARP coordinates and site at AD	Lat : 173716N Long : 0614754W Site : Intersection of RWY and TWY centre lines
2	Direction and distance from city	1.7NM SE of Codrington city center
3	Elevation/Reference Temperature	8.6M (28FT) / 30.9 °C
4	Geoid Undulation/Location	-42.6M (-139.7FT) / RWY 28 THR
5	MAG VAR/Annual change	15°W (2024) /0° 2' W per year
6	AD Administration, address, telephone, telefax, e-mail	Antigua and Barbuda Airport Authority Chief Executive Officer, V.C. Bird International Airport Coolidge St. George's Antigua and Barbuda TEL: (268) 484-2300, 484-2308 FAX: (268) 484-2340, 484-2346 E-MAIL: <a href="mailto:info@abairportauthority.com">info@abairportauthority.com</a>
7	Types of traffic permitted (IFR/VFR)	IFR/VFR
8	Remarks	NIL

### TAPB AD 2.3 OPERATIONAL HOURS

1	AD Administration	Refer to AD CEO V.C. Bird International Airport, Antigua
2	Customs and Immigration	1000 - 2200
3	Health and Sanitation	NIL
4	AIS Briefing Office	NIL
5	ATS Reporting Office (ARO)	NIL
6	MET Briefing Office	H24
7	ATS	NIL
8	Fuelling	NIL
9	Handling	1000 - 2200
10	Security	1000 - 2200
11	De-icing	NIL
12	Remarks	Aerodrome operational from sunrise to sunset. Contact agencies at Barbuda International Airport at (268) 484-2399 or <a href="mailto:boclist@abairportauthority.com">boclist@abairportauthority.com</a> to arrange the above services.

---

### TAPB AD 2.4 HANDLING SERVICES AND FACILITIES

1	Cargo-handling facilities	By arrangement with operators
2	Fuel/Oil types	NIL
3	Fuelling facilities/capacity	NIL
4	De-icing	NIL
5	Hangar Space for visiting aircraft	NIL
6	Repair facilities for visiting aircraft	NIL
7	Remarks	Corporate and private operators requiring handling services must proceed to the west apron and request the services of the FBO. See AD 2.20

### TAPB AD 2.5 PASSENGER FACILITIES

1	Hotels	Guest Houses
2	Restaurants	In the City
3	Transportation	Taxis, Limousine Service, Car Rentals
4	Medical facilities	First Aid treatment at AD Hospital 3 KM (1.8 NM) from airport
5	Bank and Post Office	In the City. Closed on Public Holidays.
6	Tourist Office	Tourism Office in the city, Tel: (268) 562 -7065/66
7	Remarks	NIL

### TAPB AD 2.6 RESCUE AND FIRE FIGHTING SERVICES

1	AD Category for fire fighting	AVAILABLE - Category 5
2	Rescue equipment	1 Ambulance, 1 Pick-up, 1 Tender
3	Capability for removal of disabled aircraft	By arrangements with airlines and local contractor
4	Remarks	NIL

### TAPB AD 2.7 SEASONAL AVAILABILITY - CLEARING

1	Types of clearing equipment	NIL
2	Clearance priorities	NIL
3	Remarks	AD available all seasons

---

**TAPB AD 2.8 APRONS, TAXIWAYS AND CHECK LOCATIONS DATA**

1	Apron surface and strength	Type of surface: Asphalt Strength: PCR 226/F/B/X/T
2	Taxiway width, surface and strength	<b>TWY A</b> Width: 23 M (75FT) Type of surface: Asphalt Strength: PCR 226/F/B/X/T
3	ACL location and elevation	Location: Location 1 - Apron Stand 1, Elevation 6.7M (22FT) Location 2 - Apron Stand 2, Elevation 7.1M (23FT)
4	VOR Checkpoints	NIL
5	INS Checkpoints	NIL
6	Remarks	NIL

**TAPB AD 2.9 SURFACE MOVEMENT GUIDANCE AND CONTROL SYSTEM AND MARKINGS**

1	Use of aircraft stand ID signs, TWY guide lines and visual docking/parking guidance system of aircraft stands	Taxiing guidance signs at intersection at holding position, Guidance at Apron.
2	Markings  Lights (LGT)	RWY : Designator, THR, TDZ Centre line, End  TWY : Centre line, holding positions at TWY/RWY Intersections, Side stripes  RWY : THR, Edge, End  TWY : Edge
3	Stop bars	NIL
4	Other runways protection measures	NIL
5	Remarks	NIL

**TAPB AD 2.10 AERODROME OBSTACLES**

ID OBST/ Designation	OBST type	OBST Coordinate	ELEV/HGT	Markings/Type, Colour of Light	Remarks
a	b	c	d	e	f
TAPBOB001	TWR	17 37 31.01N 061 48 26.70W	67.52M (222FT)	lighted red	TWR - New Airport
TAPBOB002	TWR	17 35 22.67N 061 48 58.61W	54.80M (180FT)	lighted red	TWR - Ferry Dock
TAPBOB003	TWR	17 38 26.89N 061 49 32.75W	45.92M (151FT)	lighted red	Cell TWR Codrington

### TAPB AD 2.11 METEOROLOGICAL INFORMATION PROVIDED

1	Associated MET Office	V.C. Bird MET Office
2	Hours of service MET Office outside hours	H24
3	Office responsible for TAF preparation Periods of validity	V.C. Bird MET Office
4	Type of landing forecast Interval of issuance	NIL
5	Briefing/consultation provided	NIL
6	Flight documentation Language(s) used	English
7	Charts and other information available for briefing or consultation	NIL
8	Supplementary equipment available for providing information	AWOS 3P 131.875MHZ
9	ATS units provided with information	NIL
10	Additional information (limitation of service, etc.)	NIL

### TAPB AD 2.12 RUNWAY PHYSICAL CHARACTERISTICS

Designations RWY NR	TRUE & MAG BRG	Dimensions of RWY (M)	Strength(PCR) and surface of RWY and SWY	THR Coordinates/ RWY End Coordinates THR GUND	THR elevation and highest elevation of TDZ of precision APP RWY	Slope of RWY-SWY
1	2	3	4	5	6	7
<b>10</b>	86.36° GEO 101.36° MAG	1859 x 30	PCR 226/F/B/X/T Asphalt	173713.97N 0614825.18W -42.4M	NA	+0.26%
<b>28</b>	266.36° GEO 281.36° MAG	1859 x 30	PCR 226/F/B/X/T Asphalt	173717.81N 0614722.24W -42.6M	NA	-0.26%

SWY Dimensions (M)	CWY Dimensions (M)	Strip Dimension (M)	RESA Dimensions,	Location/ description of arresting system	OFZ	Remarks
8	9	10	11	12	13	14
NIL	NIL	1979 x 280	92 x 60	NIL	NIL	NIL
NIL	NIL	1979 x 280	92 x 60	NIL	NIL	NIL

### TAPB AD 2.13 DECLARED DISTANCES

RWY designator	TORA (M)	TODA (M)	ASDA (M)	LDA (M)	Remarks
1	2	3	4	5	6
<b>10</b>	1859	1859	1859	1859	NIL
<b>28</b>	1859	1859	1859	1859	NIL

### TAPB AD 2.14 APPROACH AND RUNWAY LIGHTING

RWY designator	APCH LGT Type LEN INTST	THR LGT Colour WBAR	VASIS (MEHT) PAPI	TDZ, LGT LEN	RWY Centre line LGT, Length, spacing, colour, INTST	RWY edge LGT LEN, spacing colour INTST	RWY End LGT colour WBAR	SWY LGT LEN (M) colour	Remarks
1	2	3	4	5	6	7	8	9	10
<b>10</b>	White High Intensity 900	Green	PAPI L/3° (50.0FT) MEHT	Nil	Nil	1859M 60M white, last 600M yellow	Red	Nil	Nil
<b>28</b>	Nil	Green	PAPI L/3° (50.0FT) MEHT	Nil	Nil	1859M 60M white, last 600M yellow	Red	NIL	Nil

### TAPB AD 2.15 OTHER LIGHTING, SECONDARY POWER SUPPLY

1	ABN/IBN location, characteristics and hours of operation	ABN: AD FLG White 24 FPM
2	LDI location and LGT Anemometer location and LGT	LDI: lighted windsock on left side of RWY 10, 100.3M from THR, lighted windsock on left side of RWY 28, 97.8M from THR. ANEMOMETER: remote station on north side of RWY 10, 150M from CL
3	TWY edge and centre lighting	TWY A Edge: Blue, omnidirectional Centre line: NIL
4	Secondary power supply/switch-over time	Secondary Power Supply Switch over time 11.5 Sec
5	Remarks	NIL



---

## TAPB AD 2.20 LOCAL TRAFFIC REGULATIONS

### 1. Airport regulation

#### 1.1 *Airport Regulations/Restrictions*

1. All traffic landing and departing TAPB must transmit a self-announced broadcast on frequency 122.950MHz.
2. \*All aircraft are required to land or depart on the active runway.
3. For arriving aircraft, all engines must be shut down prior to the deplaning of any passenger.
4. For departing aircraft, no engine shall be started until all passengers have boarded the aircraft.
5. All arriving and departing aircraft shall close or activate flight plans immediately on arrival and prior to departure according to the established procedures in TAPB AD 2.22.
6. All corporate, private and commercial aircraft operating into Barbuda International Airport (TAPB) must utilise the services of one of the following approved Ground Handling Service Operators:
  - i. Dispatch Services Antigua Limited (FBO)  
Phone: 1-268-562-4148; 1-268-464-8501/4148  
Email: [dsa.bbq@dsaltd.info](mailto:dsa.bbq@dsaltd.info) or [dsaops@dsaltd.info](mailto:dsaops@dsaltd.info)
  - ii. Express Handlers Limited  
Phone: 1-268-484-1416  
Email: [expresshandlerslimited@gmail.com](mailto:expresshandlerslimited@gmail.com)

*\*Note 1: The active runway is a runway that other aircraft are using or are intending to use for the purpose of landing or taking off.*

*\*Note 2: Should it be necessary for an aircraft to land on, or take off from a runway other than the active runway, it is required that the appropriate communication between the pilot and other local traffic takes place to ensure that there are no conflicts.*

### 2. Taxiing

#### 2.1 *Taxiing to and from stands*

1. Arriving aircraft will be allocated a Gate Number by the Airport Operations.

## TAPB AD 2.21 NOISE ABATEMENT PROCEDURES

NIL

---

---

## TAPB AD 2.22 FLIGHT PROCEDURES

### 1. Procedures for IFR/VFR Flights

#### 1.1 *General*

1. All traffic wishing to operate into Barbuda from outside the V.C. Bird TMA and departing Barbuda for destinations outside the V.C. Bird TMA must file a flight plan with the V.C. Bird AIS via AFTN or email.
2. No flight plan is required for traffic wishing to operate within the V.C Bird TMA. However, information on the flight shall be passed via telephone or on the frequency when airborne.
3. Ascertain by radio on the appropriate TAPB frequency 122.950MHz and by visual observation that no other aircraft or vehicle is likely to be a conflict with the aircraft during take-off.

Maintain a listening watch and follow the reporting procedures as outlined in this document.

### 2. VFR Traffic

#### 2.1 *VFR Arrivals Procedures*

1. All arriving VFR traffic must report position, altitude, arrival procedure, intentions and estimated time of arrival prior to entering the area.
  2. Pilots shall make position calls at each of the following points:
    - a. 10 miles away from TAPB
    - b. 5 miles away from TAPB
    - c. 45 degree entry to the downwind
    - d. Downwind
    - e. Base
    - f. Final
  3. The traffic circuit in TAPB shall be flown at 1500FT or below.
  4. \*All turns in the circuit shall be to the right for RWY 10 and left-hand circuit for RWY 28.
  5. Aircraft shall approach the traffic circuit from the downwind side. However, if the pilot has positively determined that either there is no other traffic or that there will be no conflicting circuit traffic, aircraft shall join via crosswind for RWY 10 and base leg for RWY 28.
  6. When joining the downwind, descend to cross abeam the threshold of the active runway in level flight at the published circuit altitude of 1500FT. Maintain that altitude until further descent is required for landing.
  7. All descents should be made on the downwind side or well clear of the circuit pattern.
-



---

*\*Note 1: NO UPWIND due to the BIRD SANCTUARY to the north of the airfield.*

## **2.2 VFR Departures**

1. All VFR aircraft departing RWY 10 should climb on the runway heading until above 2000FT before commencing a right turn to an enroute heading. Departures wishing to make a left turn shall maintain runway heading until above 5000FT. Turns back toward the circuit or airport should not be initiated until the aircraft is at 2000FT or higher.
2. For aircraft departing RWY 28 right turns are prohibited to avoid the bird sanctuary.

## **3. IFR Traffic**

### **3.1 IFR Departures**

1. Options for all departures requesting IFR:
  - a. Primary Option: Call on the ground in TAPB and request an IFR clearance with an ETD. This may be done via telephone or via a radio frequency. The controller shall issue an IFR clearance with a clearance expiry time.
  - b. Please note it might take some time due to coordination procedures or airspace congestion, before the pilot can receive an IFR clearance.

*\*Note 1: It might take some time due to coordination procedures or airspace congestion, before the pilot can receive an IFR clearance.*

### **3.2 IFR Arrivals**

1. All arriving IFR aircraft inbound to TAPB must continue on their current flight plan to the ANU VOR with clearance to proceed outbound on R005 ANU at 2500FT with clearance limit 20DME, then cancel IFR and descend to 2000FT into class G airspace. The aircraft shall proceed to join the traffic circuit at TAPB and follow the procedure for VFR arrivals (see section 2.1) into TAPB.
2. All arriving aircraft, IFR or VFR, shall close their flight plan once they have landed via the assigned frequency or designated phone line.

## **TAPB AD 2.23 ADDITIONAL INFORMATION**

### **1. Bird concentrations in the vicinity of the airport**

A frigatebird sanctuary is located in the northern part of the island. Occasionally, frigatebirds may be seen anywhere over the Barbuda Airport or offshore. Pilots are asked to remain vigilant.

---

---

**TAPB AD 2.24 CHARTS RELATED TO AERODROME**

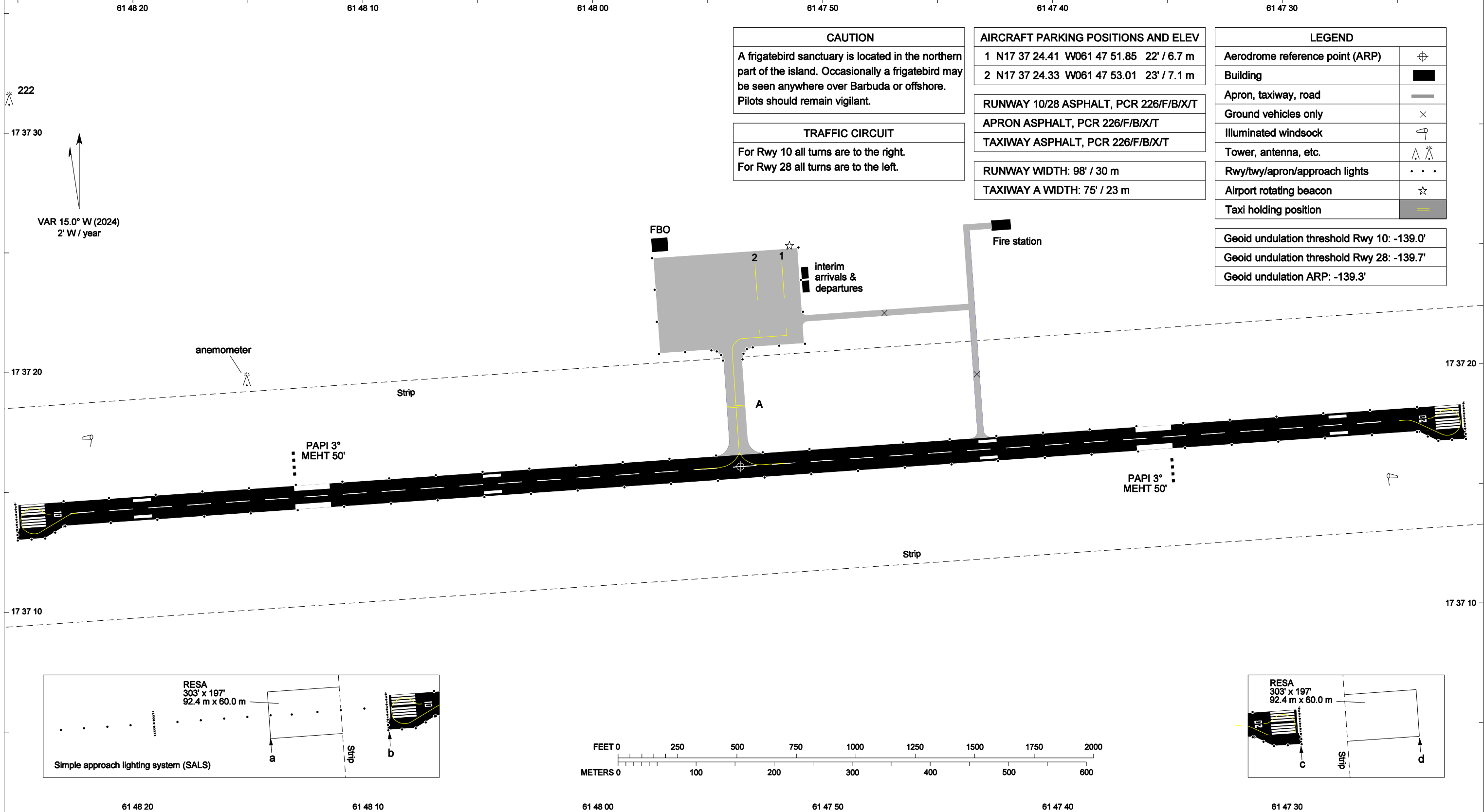
- 1. Aerodrome/Heliport Chart ..... AD2.2-2-11
- 2. Aerodrome Obstacle Chart – ICAO Type A RWY 10/28 ..... AD2.2-2-13

**TAPB AD 2.25 Visual Segment Surface (VSS)**

<b>Procedure</b>	<b>Procedure Minima</b>	<b>VSS Penetration</b>
<b>1</b>	<b>2</b>	<b>3</b>
NIL	NIL	NIL

# ATTACHMENT B

<b>AERODROME CHART - ICAO</b>	ARP: N 17 37 15.89 W 061 47 53.71	AERODROME ELEV: 28' 8.6 m	BIRD APPROACH 119.100 BARBUDA UNICOM 122.950	BARBUDA AWOS 3P 131.875 BARBUDA Apt Operations (pkg assignments): 165.300	DIMENSIONS IN FEET / METERS ELEVATIONS IN FEET BEARINGS ARE MAGNETIC	<b>BARBUDA INT'L AIRPORT (TAPB) BARBUDA IS., ANTIGUA AND BARBUDA</b>
-------------------------------	--------------------------------------	---------------------------	---	--	--	--



	TORA	TODA	ASDA	LDA	START OF TORA/TODA/ASDA	POINT	ELEV	START OF LDA	POINT	ELEV	LIGHTING	BEARING
10	6100' 1859 m (b - c)	6100' 1859 m (b - c)	6100' 1859 m (b - c)	6100' 1859 m (b - c)	N17 37 13.97 W061 48 25.18	b	13' 3.8 m	N17 37 13.97 W061 48 25.18	b	13' 3.8 m	Approach, RTIL, rwy threshold/end, high intensity rwy edge, PAPI L - 3°	101°
28	6100' 1859 m (c - b)	6100' 1859 m (c - b)	6100' 1859 m (c - b)	6100' 1859 m (c - b)	N17 37 17.81 W061 47 22.24	c	28' 8.6 m	N17 37 17.81 W061 47 22.24	c	28' 8.6 m	RTIL, rwy threshold/end, high intensity rwy edge, PAPI L - 3°	281°

Intentionally left blank

# ATTACHMENT C

**DIMENSIONS IN FEET / METERS  
ELEVATIONS IN FEET / METERS**

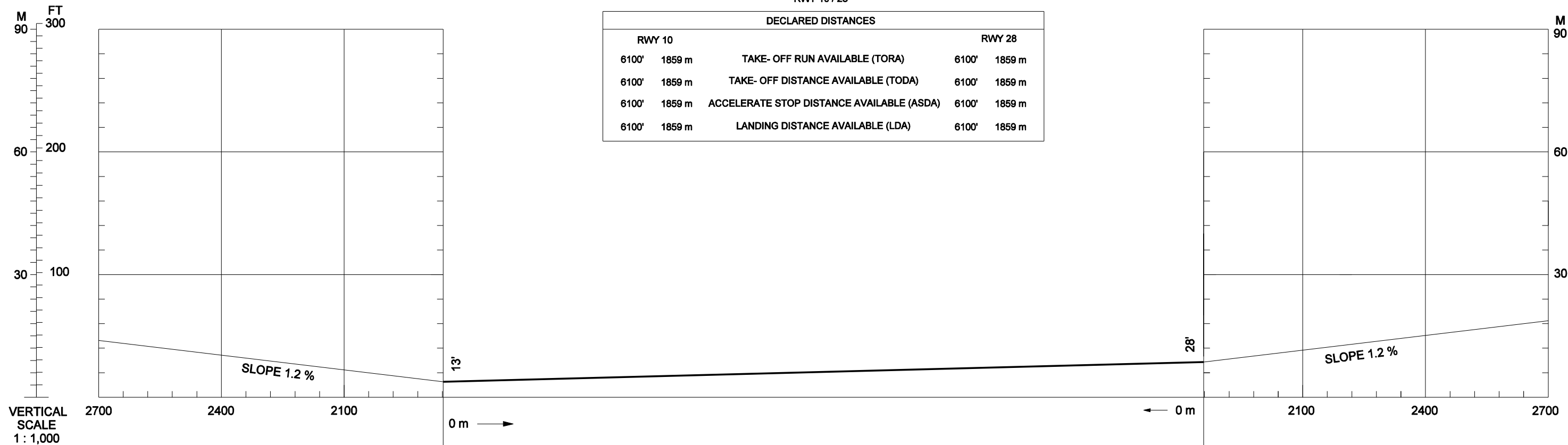
**AERODROME OBSTACLE CHART - ICAO  
TYPE A - OPERATING LIMITATIONS**

**BARBUDA INT'L AIRPORT (TAPB)  
BARBUDA IS., ANTIGUA AND BARBUDA**

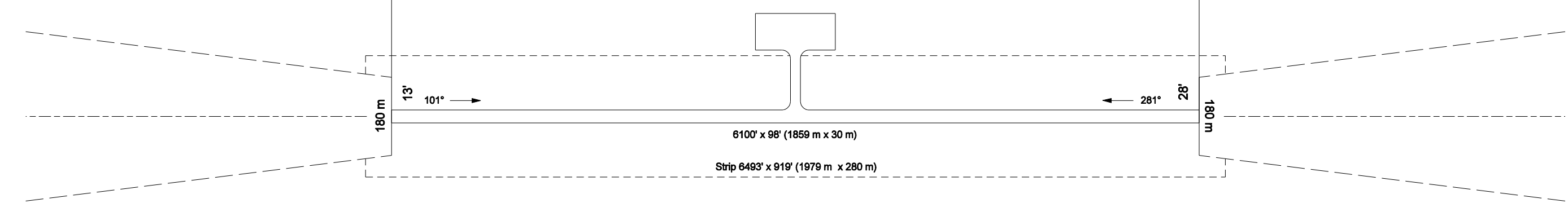
MAGNETIC VARIATION 15° W - JUNE 2024

RWY 10 / 28

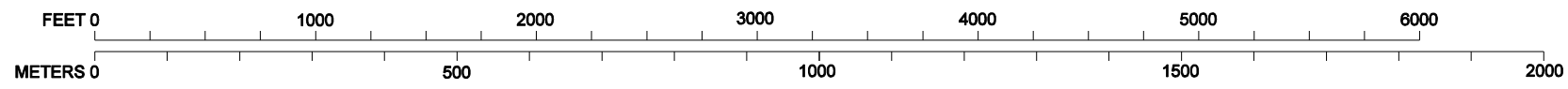
DECLARED DISTANCES					
RWY 10			RWY 28		
6100'	1859 m	TAKE-OFF RUN AVAILABLE (TORA)	6100'	1859 m	
6100'	1859 m	TAKE-OFF DISTANCE AVAILABLE (TODA)	6100'	1859 m	
6100'	1859 m	ACCELERATE STOP DISTANCE AVAILABLE (ASDA)	6100'	1859 m	
6100'	1859 m	LANDING DISTANCE AVAILABLE (LDA)	6100'	1859 m	



VERTICAL SCALE  
1 : 1,000



HORIZONTAL SCALE - 1 : 10,000  
ORDER OF ACCURACY - In accordance with ICAO standards



LEGEND	PLANVIEW	PROFILE
IDENTIFICATION NUMBER	①	
POLE, TOWER, ANTENNA, HOUSE	⤴	INSIDE OUTSIDE
TERRAIN ELEVATION	•	
TREE, PALM	🌳 🌴	

AMENDMENT RECORD		
No.	DATE	ENTERED BY
Original	AIRAC date	Chart provider

Intentionally left blank

**PIARCO INTERNATIONAL NOTAM OFFICE****AIP  
SUPPLEMENT**

Tele: 1 868 669-4128  
1 868 668-8222 ext 2510  
FAX: 1 868 669 1716  
AFTN: TTPPYNYX  
Email:aimpublication@caa.gov.tt

TRINIDAD & TOBAGO  
CIVIL AVIATION AUTHORITY,  
P.O. BOX 2163, NATIONAL MAIL CENTRE,  
PIARCO  
REPUBLIC OF TRINIDAD AND TOBAGO

**27/24**  
**28 NOV 24**

**AD****27. V.C. BIRD INTERNATIONAL AIRPORT (TAPA)****Establishment of Area Chart - ICAO V.C. Bird TMA****Effective: 241128 to PERM**

A new area chart has been established for V.C. Bird TMA.

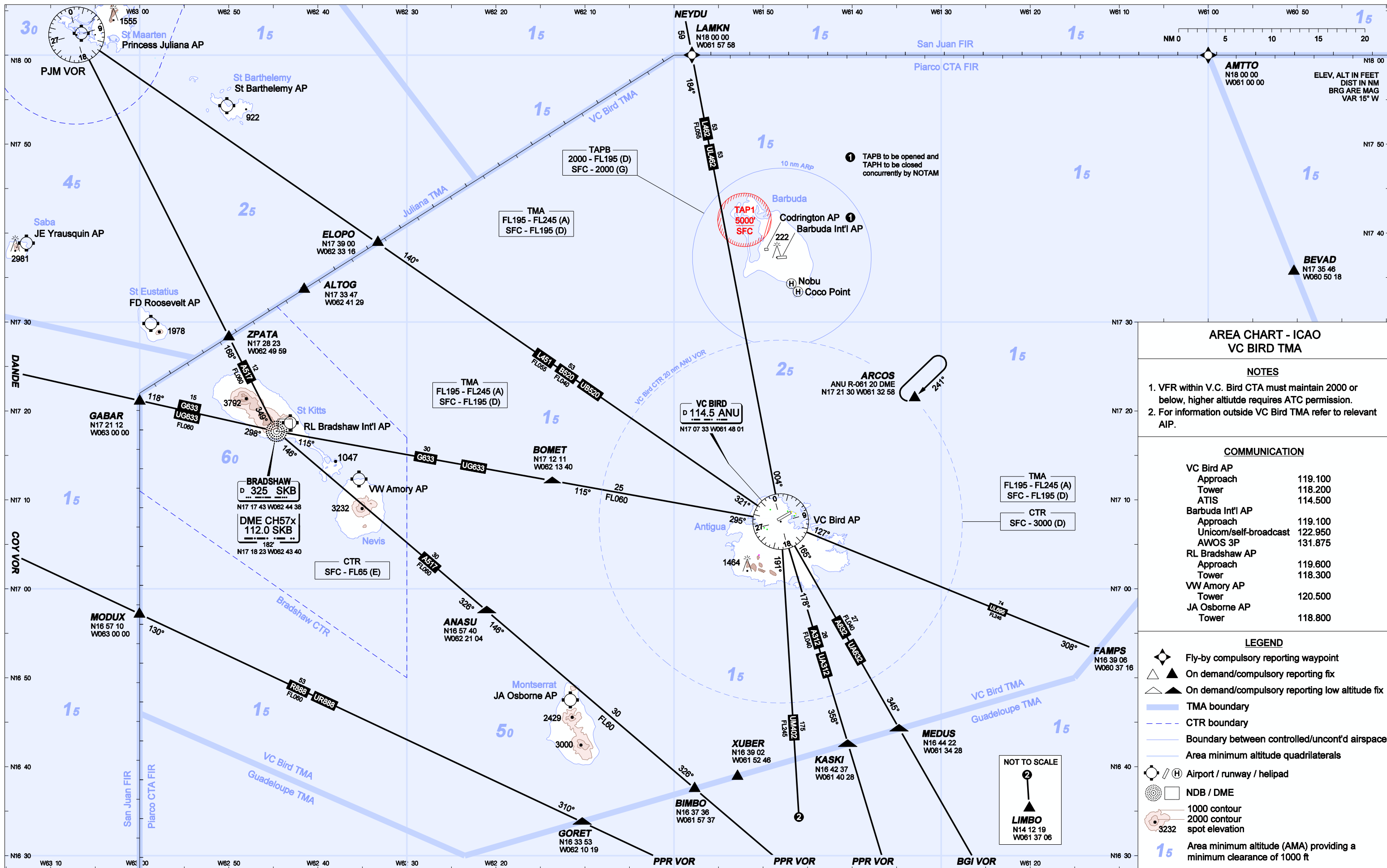
Please see Attachment A for the new chart.

**END**

Intentionally left blank



ATTACHMENT A



AREA CHART - ICAO  
VC BIRD TMA

NOTES

1. VFR within V.C. Bird CTA must maintain 2000 or below, higher altitude requires ATC permission.
2. For information outside VC Bird TMA refer to relevant AIP.

COMMUNICATION

VC Bird AP	
Approach	119.100
Tower	118.200
ATIS	114.500
Barbuda Int'l AP	
Approach	119.100
Unicom/self-broadcast	122.950
AWOS 3P	131.875
RL Bradshaw AP	
Approach	119.600
Tower	118.300
VW Amory AP	
Tower	120.500
JA Osborne AP	
Tower	118.800

LEGEND

- Fly-by compulsory reporting waypoint
- On demand/compulsory reporting fix
- On demand/compulsory reporting low altitude fix
- TMA boundary
- CTR boundary
- Boundary between controlled/uncont'd airspace
- Area minimum altitude quadrilaterals
- Airport / runway / helipad
- NDB / DME
- 1000 contour
- 2000 contour
- spot elevation
- Area minimum altitude (AMA) providing a minimum clearance of 1000 ft

NOT TO SCALE

2

**LIMBO**  
N14 12 19  
W061 37 06

Intentionally left blank

**PIARCO INTERNATIONAL NOTAM OFFICE****AIP  
SUPPLEMENT**

Tele: 1 868 669-4128  
1 868 668-8222 ext 2510  
FAX: 1 868 669 1716  
AFTN: TTPPYNYX  
Email:aimpublication@caa.gov.tt

TRINIDAD & TOBAGO  
CIVIL AVIATION AUTHORITY,  
P.O. BOX 2163, NATIONAL MAIL CENTRE,  
PIARCO  
REPUBLIC OF TRINIDAD AND TOBAGO

**26/24**  
**28 NOV 24**

**AD****26. PIARCO INTERNATIONAL AIRPORT (TTPP) AND A.N.R. ROBINSON INTERNATIONAL AIRPORT (TTCP)****TTPP RNAV (GNSS) RWY 10, TTPP RNAV (GNSS) RWY 28, TTCP RNAV (GNSS) RWY 11 and TTCP RNAV (GNSS) RWY 29 Charts Amended****Effective: 241128 to PERM**

The following changes have been incorporated into the attached Piarco RNAV (GNSS) RWY 10 chart, Piarco RNAV (GNSS) RWY 28 chart, A.N.R. Robinson RNAV (GNSS) RWY 11 chart and A.N.R. Robinson RNAV (GNSS) RWY 29 chart, and relevant verso pages:

- Chart identification from RNAV (GNSS) to RNP;
- PBN requirement box in profile view;
- Removal of asterisk (\*) from TTPP verso tables for waypoints LEXOR, TALUS, BOSAT, DANON and removal of asterisk note, "*\*previous waypoint identifier with updated coordinates*";
- Removal of asterisk (\*) from TTCP verso tables for waypoints SASIM, NOTEL, DEBOP, VODAN and removal of asterisk note, "*\*previous waypoint identifier with updated coordinates*".

Please see attachments A, B, C and D for updated charts for TTPP and TTCP.

Please amend the Eastern Caribbean AIP pages AD 2.10-1-33, AD 2.10-1-34, AD 2.10-1-35, AD 2.10-1-36, AD 2.10-2-31, AD 2.10-2-32, AD 2.10-2-33, AD 2.10-2-34

**END**

Intentionally left blank

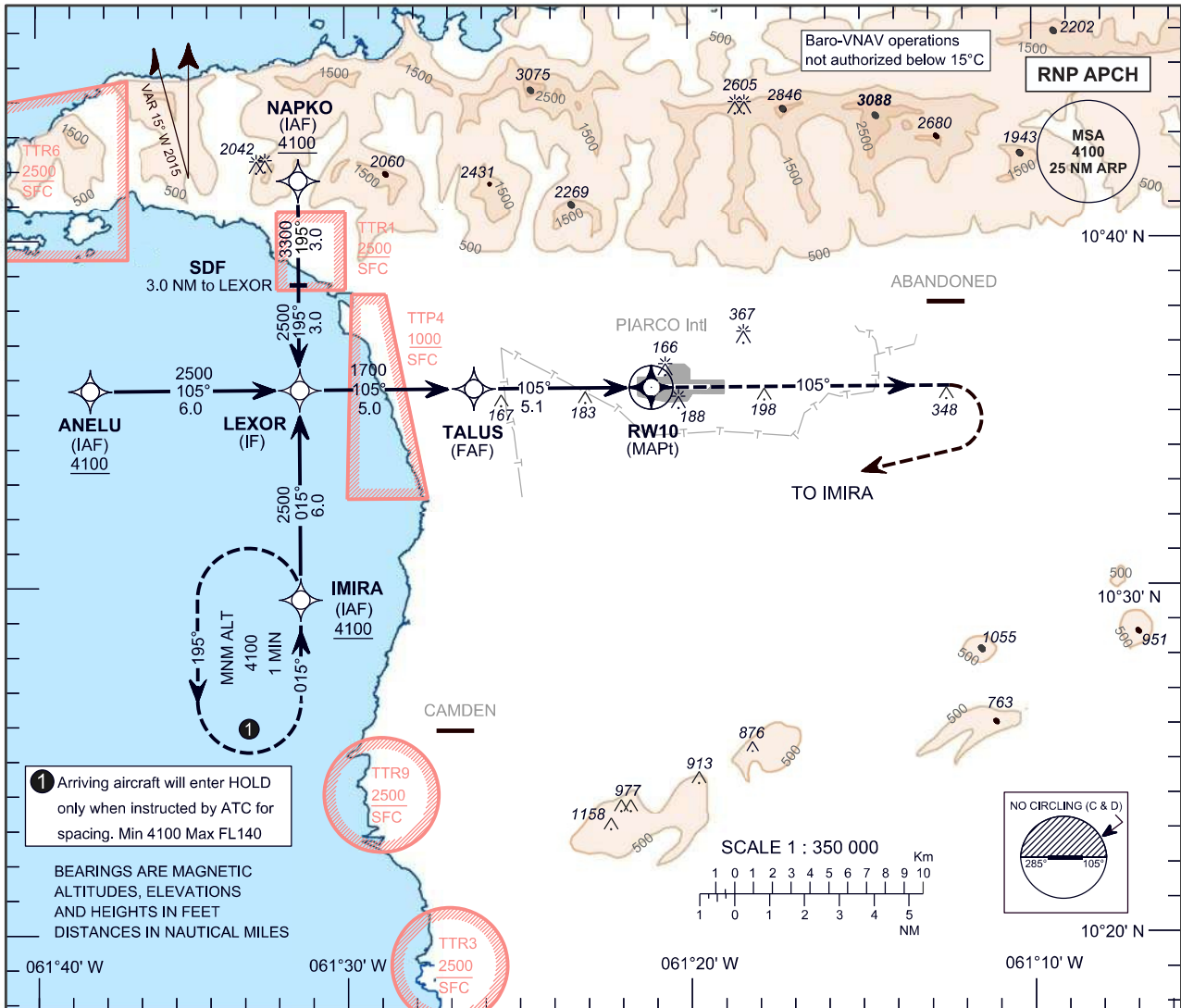
# ATTACHMENT A

**INSTRUMENT  
APPROACH  
CHART - ICAO**

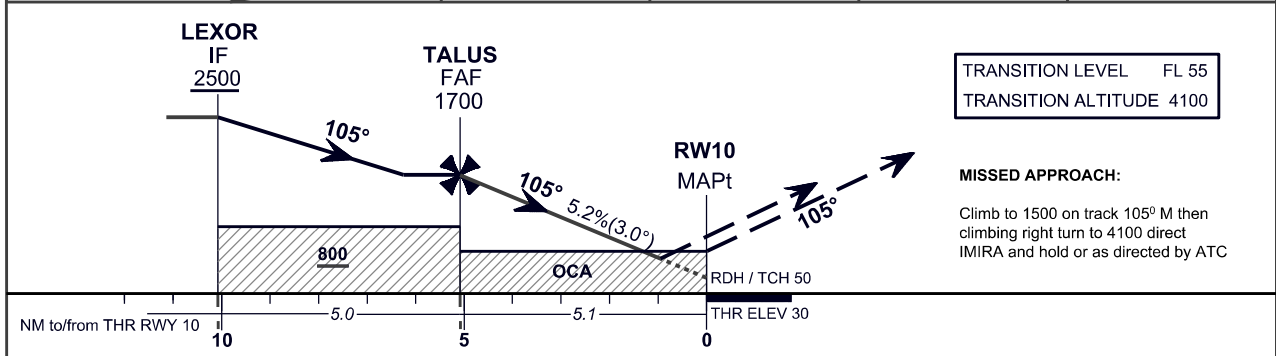
**AERODROME ELEV 58 ft**  
HEIGHTS RELATED TO  
THR RWY 10 - ELEV 30 ft

PIARCO APP 119,000, 119,550  
PIARCO TWR 118,100  
PIARCO ATIS 126,700

**PORT OF SPAIN/  
PIARCO Intl (TTPP)**  
RNP RWY 10



NM to NEXT WPT	RW10	2	3	4	5
ALTITUDE		720	1040	1360	1680



OCA (OCH)	A	B	C	D
LNAV		430 (400)		
LNAV/VNAV		350 (320)		
*CIRCLING	670	670	710	830
*CIRCLING NOT AUTHORIZED NORTH OF AD (CAT C & D)				

Ground Speed	kt	70	90	100	120	140	160
Rate of descent FAF-MAPt 3.0°(5.2%)	f/min	372	478	531	637	743	849

## TABULAR DESCRIPTION

RNP RWY 10											
Serial Number	Path Descriptor	Waypoint Identifier	Fly Over	Course °M (°T)	Magnetic Variation	Distance (NM)	Turn Direction	Altitude (ft.)	Speed Limit (kt.)	VPA/TCH	Navigation Specification
10	IF	ANELU	-	-	-	-	-	+4100	-	-	RNP APCH
20	TF	LEXOR	-	105 (89.8)	-	6.0	-	+2500	-	-	RNP APCH
10	IF	IMIRA	-	-	-	-	-	+4100	-	-	RNP APCH
20	TF	LEXOR	-	015 (359.8)	-	6.0	-	+2500	-	-	RNP APCH
10	IF	NAPKO	-	-	-	-	-	+4100	-	-	RNP APCH
20	TF	LEXOR	-	195 (179.8)	-	6.0	-	+2500	-	-	RNP APCH
10	IF	LEXOR	-	-	-	-	-	+2500	-	-	RNP APCH
20	TF	TALUS	-	105 (89.8)	-	5.0	-	@1700	-	-	RNP APCH
30	TF	RW10	Y	105 (89.8)	-	5.1	-	@80	-	-3.0/50	RNP APCH
40	CA	-	-	105 (89.8)	+15.0	-	-	+1500	-	-	RNP APCH
50	DF	IMIRA	-	-	-	-	R	+4100	-	-	RNP APCH
60	HM	IMIRA	-	015 (359.8)	-	-	L	+4100	-	-	RNP APCH

## WAYPOINT LIST

RNP RWY 10	
Waypoint Identifier	Coordinates
ANELU	10°35'39.77"N 061°37'26.83"W
IMIRA	10°29'39.49"N 061°31'20.17"W
NAPKO	10°41'42.79"N 061°31'22.42"W
LEXOR	10°35'41.14"N 061°31'21.29"W
TALUS	10°35'42.19"N 061°26'16.67"W
RW10	10°35'43.18"N 061°21'06.69"W
(Stepdown Fix) - 3.0 NM to LEXOR	10° 38' 41.97" N 061° 31' 21.85"W

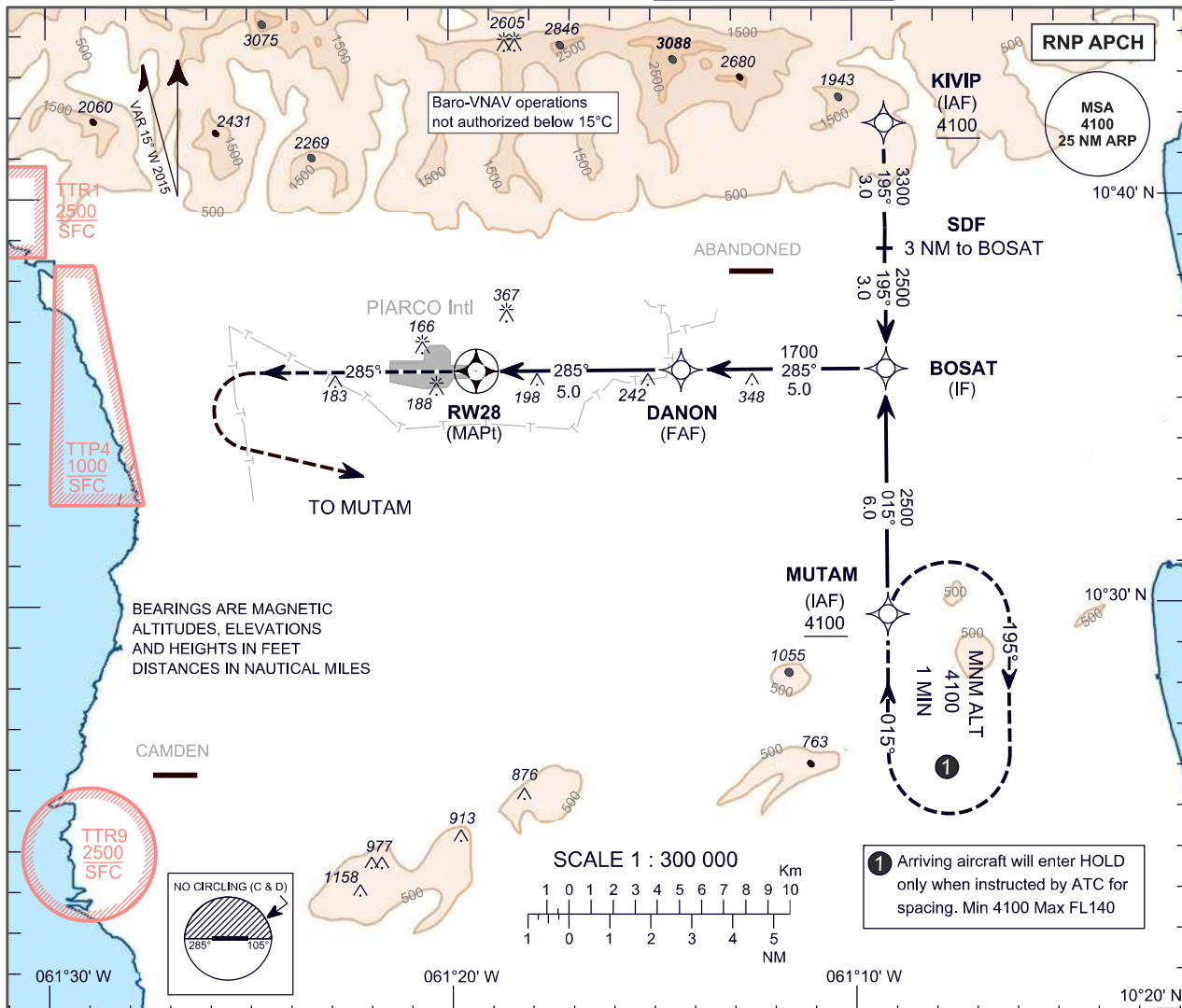
# ATTACHMENT B

**INSTRUMENT  
APPROACH  
CHART - ICAO**

**AERODROME ELEV 58 ft**  
HEIGHTS RELATED TO  
THR RWY 28 - ELEV 58 ft

PIARCO APP 119.000, 119.550  
PIARCO TWR 118.100  
PIARCO ATIS 126.700

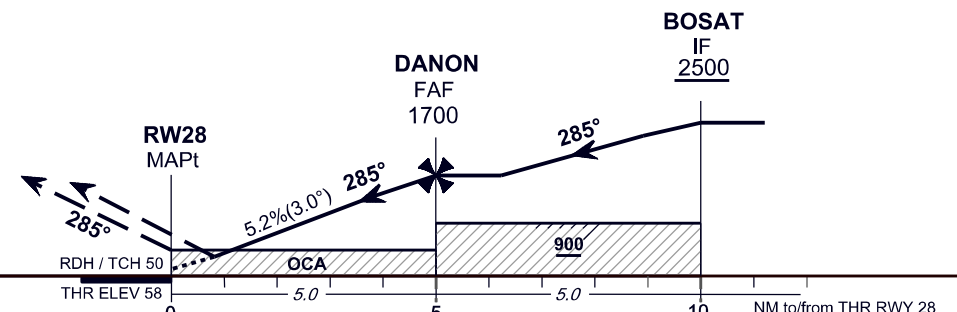
**PORT OF SPAIN/  
PIARCO Intl (TTPP)**  
RNP RWY 28



NM to NEXT WPT	RW28	2	3	4	5
ALTITUDE		750	1070	1390	1700

TRANSITION LEVEL FL 55  
TRANSITION ALTITUDE 4100

**MISSED APPROACH:**  
Climb to 1000 on track 285° M then climbing left turn to 4100 direct MUTAM and hold or as directed by ATC



OCA (OCH)	A	B	C	D
LNAV	490 (432)			
LNAV/VNAV	360 (302)			
*CIRCLING	670	670	710	830
*CIRCLING NOT AUTHORIZED NORTH OF AD (CAT C & D)				

Ground Speed	kt	70	90	100	120	140	160
Rate of descent	ft/min	372	478	531	637	743	849

## TABULAR DESCRIPTION

RNP RWY 28											
Serial Number	Path Descriptor	Waypoint Identifier	Fly Over	Course °M (°T)	Magnetic Variation	Distance (NM)	Turn Direction	Altitude (ft)	Speed Limit (kt)	VPA/TCH	Navigation Specification
10	IF	KIVIP	-	-	-	-	-	+4100	-	-	RNP APCH
20	TF	BOSAT	-	195 (179.8)	-	6.0	-	+2500	-	-	RNP APCH
10	IF	MUTAM	-	-	-	-	-	+4100	-	-	RNP APCH
20	TF	BOSAT	-	015 (359.8)	-	6.0	-	+2500	-	-	RNP APCH
10	IF	BOSAT	-	-	-	-	-	+2500	-	-	RNP APCH
20	TF	DANON	-	285 (269.8)	-	5.0	-	@1700	-	-	RNP APCH
30	TF	RW28	Y	285 (089.8)	-	5.0	-	@108	-	-3.0/50	RNP APCH
40	CA	-	-	285 (269.8)	+15.0	-	-	+1000	-	-	RNP APCH
50	DF	MUTAM	-	-	-	-	L	+4100	-	-	RNP APCH
60	HM	MUTAM	-	015 (359.8)	-	-	R	+4100	-	-	RNP APCH

## WAYPOINT LIST

RNP RWY 28	
Waypoint Identifier	Coordinates
KIVIP	10°41'46.78"N 061°09'13.25"W
MUTAM	10°29'43.48"N 061°09'11.07"W
BOSAT	10°35'45.13"N 061°09'12.16"W
DANON	10°35'44.35"N 061°14'16.78"W
RW28	10°35'43.50"N 061°19'21.40"W
(Stepdown Fix) - 3.0 nm to BOSAT	10°38'45.96"N 061°09'12.71"W



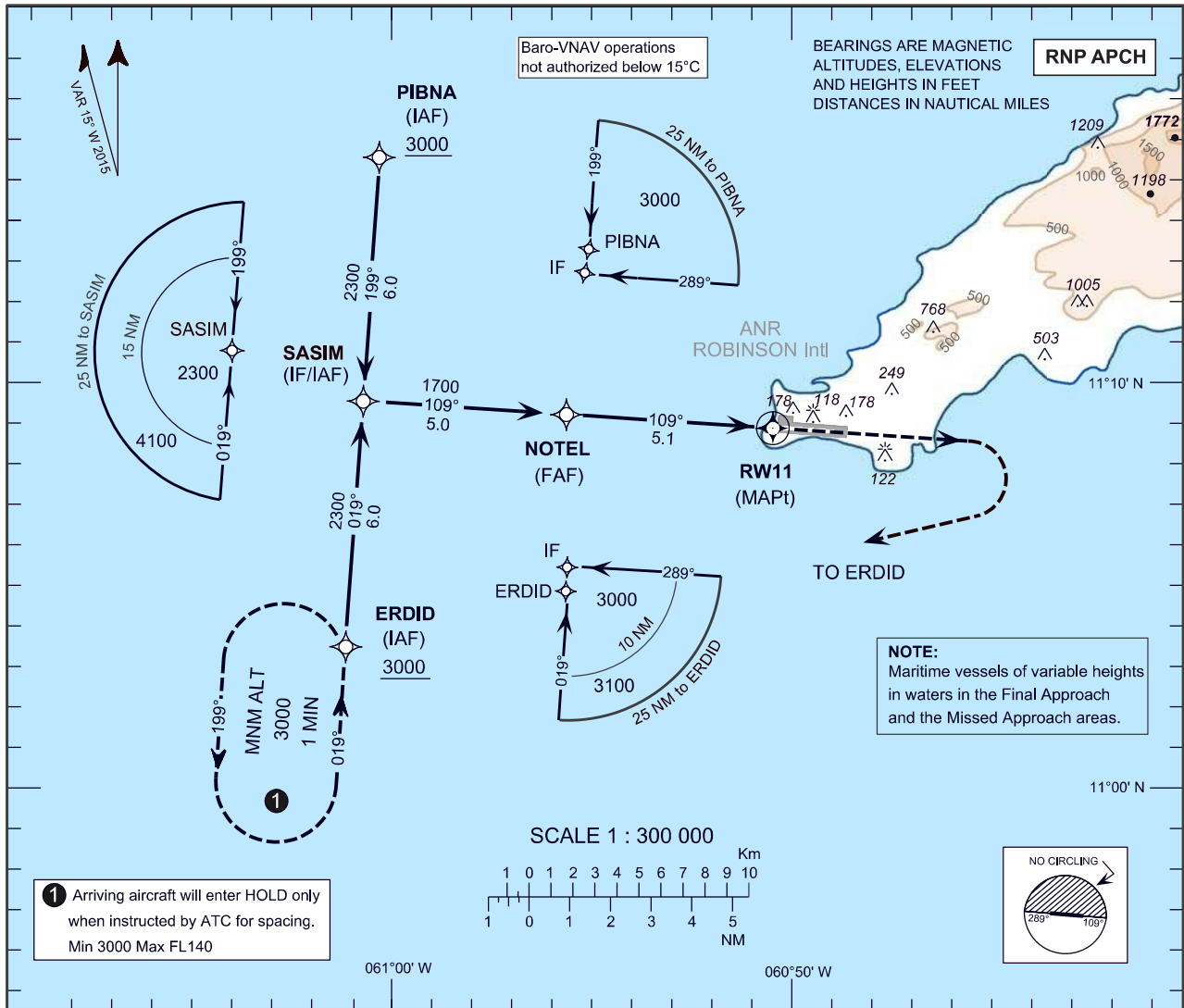
# ATTACHMENT C

**INSTRUMENT  
APPROACH  
CHART - ICAO**

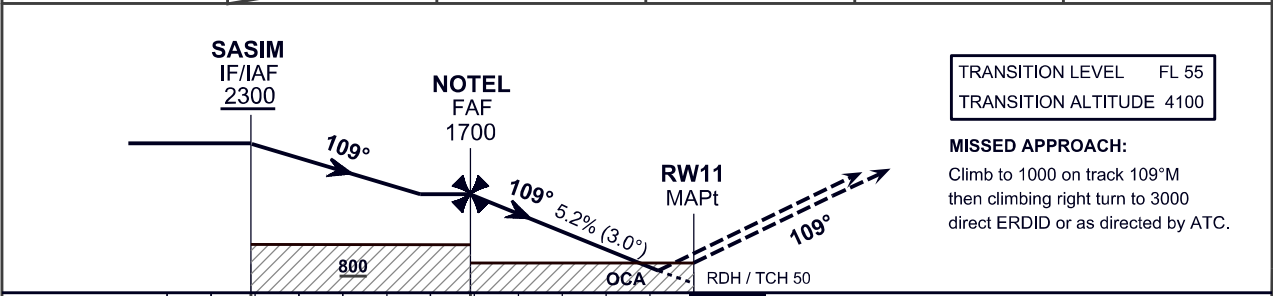
**AERODROME ELEV 38 ft**  
HEIGHTS RELATED TO  
DISP THR RWY 11- ELEV 29 ft

PIARCO APP 119.000, 119.550  
ROBINSON TWR 118.400  
ROBINSON ATIS 132.200

**SCARBOROUGH/  
A.N.R. ROBINSON Intl (TTCP)**  
**RNP RWY 11**



NM to NEXT WPT	RW11	2	3	4	5
ALTITUDE		720	1040	1360	1680



NM to/from DISP THR RWY 11	10	5.0	5	5.1	0	THR ELEV 29
----------------------------	----	-----	---	-----	---	-------------

OCA (OCH)	A	B	C	D
LNAV		500 (471)		
LNAV/VNAV		340 (311)		
*CIRCLING	550	550	650	730
*CIRCLING NOT AUTHORIZED NORTH OF AD (ALL CATs)				

Ground Speed	kt	70	90	100	120	140	160
Rate of descent FAF-MAPt 3.0°(5.2%)	ft/min	372	478	531	637	743	849

## TABULAR DESCRIPTION

RNP RWY 11											
Serial Number	Path Descriptor	Waypoint Identifier	Fly Over	Course °M (°T)	Magnetic Variation	Distance (NM)	Turn Direction	Altitude (ft)	Speed Limit (kt)	VPA/TCH	Navigation Specification
10	IF	ERDID	-	-	-	-	-	+3000	-	-	RNP APCH
20	TF	SASIM	-	019 (004.2)	-	6.0	-	+2300	-	-	RNP APCH
10	IF	PIBNA	-	-	-	-	-	+3000	-	-	RNP APCH
20	TF	SASIM	-	199 (184.2)	-	6.0	-	+2300	-	-	RNP APCH
10	IF	SASIM	-	-	-	-	-	+2300	-	-	RNP APCH
20	TF	NOTEL	-	109 (094.2)	-	5.0	-	@1700	-	-	RNP APCH
30	TF	RW11	Y	109 (094.2)	-	5.1	-	@79	-	-3.0/50	RNP APCH
40	CA	-	-	109 (094.2)	+15.0	-	-	+1000	-	-	RNP APCH
50	DF	ERDID	-	-	-	-	R	+3000	-	-	RNP APCH
60	HM	ERDID	-	019 (004.2)	-	-	L	+3000	-	-	RNP APCH

## WAYPOINT LIST

RNP RWY 11	
Waypoint Identifier	Coordinates
ERDID	11°03'45.02"N 061°01'12.49"W
PIBNA	11°15'46.36"N 061°00'18.93"W
SASIM	11°09'45.69"N 061°00'45.72"W
NOTEL	11°09'23.78"N 060°55'41.33"W
RW11	11°09'01.39"N 060°50'31.40"W

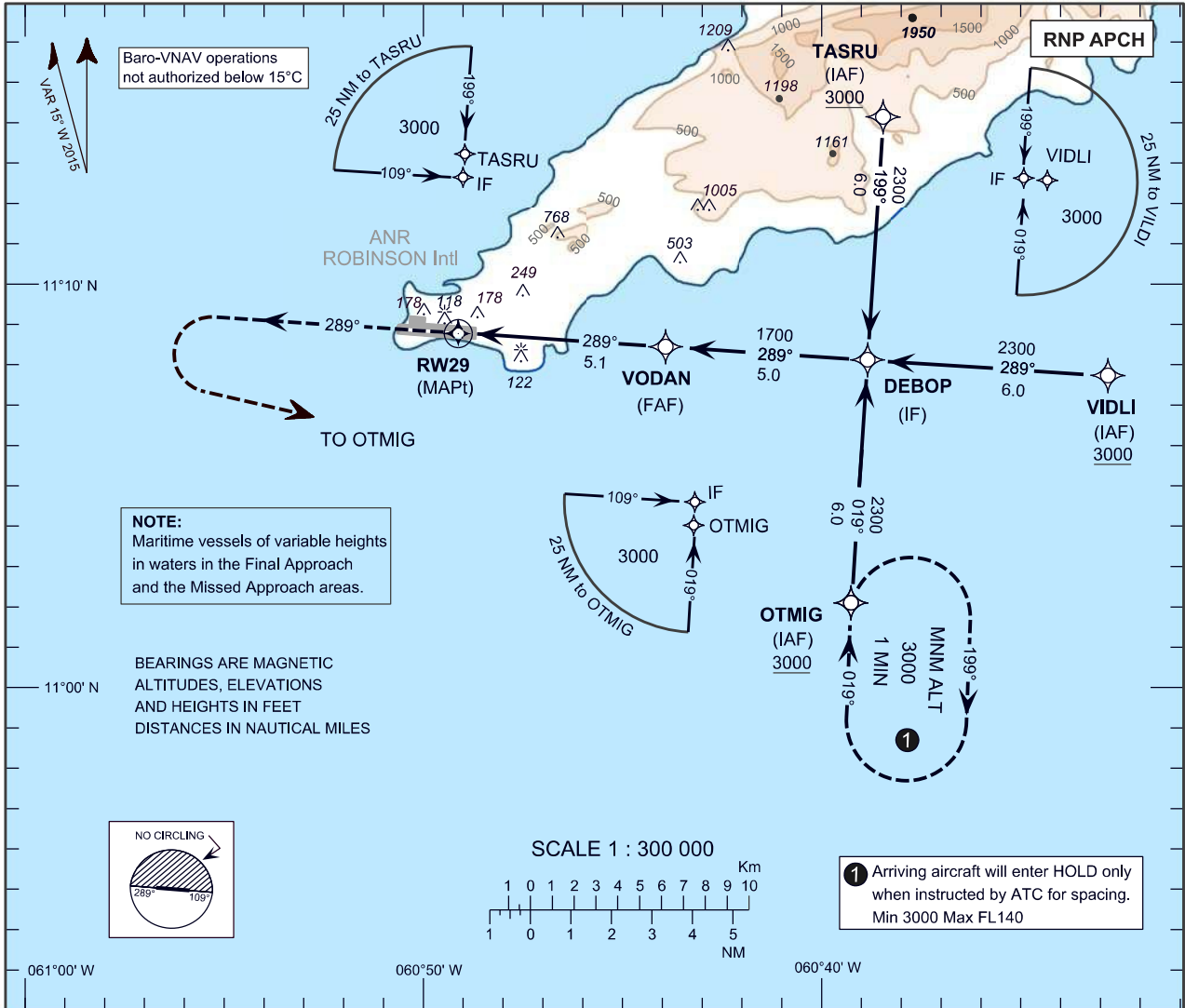
# ATTACHMENT D

**INSTRUMENT  
APPROACH  
CHART - ICAO**

**AERODROME ELEV 38 ft**  
HEIGHTS RELATED TO  
THR RWY 29 - ELEV 20 ft

PIARCO APP 119.000, 119.550  
ROBINSON TWR 118.400  
ROBINSON ATIS 132.200

**SCARBOROUGH/  
A.N.R. ROBINSON Intl (TTCP)**  
RNP RWY 29

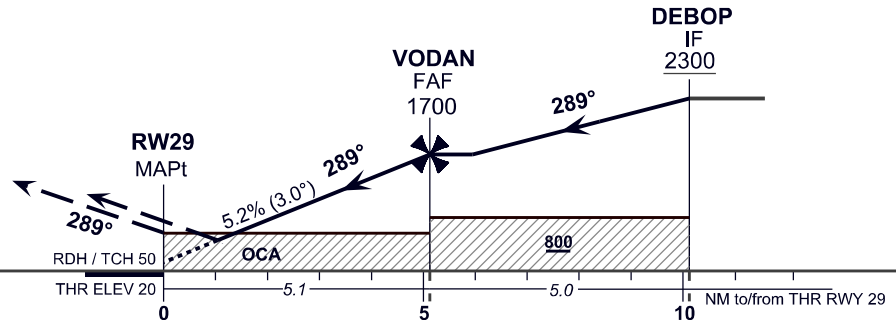


NM to NEXT WPT	RW29	2	3	4	5
ALTITUDE		710	1030	1350	1670

TRANSITION LEVEL FL 55  
TRANSITION ALTITUDE 4100

**MISSED APPROACH:**

Climb to 1000 on track 289°M then climbing left turn to 3000 direct OTMIG or as directed by ATC.



OCA (OCH)	A	B	C	D
LNAV	500 (480)			
LNAV/VNAV	340 (320)			
*CIRCLING	550	550	650	730
*CIRCLING NOT AUTHORIZED NORTH OF AD (ALL CATs)				

Ground Speed	kt	70	90	100	120	140	160
Rate of descent	ft/min	372	478	531	637	743	849
FAF-MAPt 3.0°(5.2%)							

## TABULAR DESCRIPTION

RNP RWY 29											
Serial Number	Path Descriptor	Waypoint Identifier	Fly Over	Course °M (°T)	Magnetic Variation	Distance (NM)	Turn Direction	Altitude (ft.)	Speed Limit (kt.)	VPA/TCH	Navigation Specification
10	IF	VIDLI	-	-		-	-	+3000	-	-	RNP APCH
20	TF	DEBOP	-	289 (274.2)		6.0	-	+2300	-	-	RNP APCH
10	IF	TASRU	-	-		-	-	+3000	-	-	RNP APCH
20	TF	DEBOP	-	199 (184.2)		6.0	-	+2300	-	-	RNP APCH
10	IF	OTMIG	-	-		-	-	+3000	-	-	RNP APCH
20	TF	DEBOP	-	019 (004.2)		6.0	-	+2300	-	-	RNP APCH
10	IF	DEBOP	-	-		-	-	+2300	-	-	RNP APCH
20	TF	VODAN	-	289 (274.2)		5.0	-	@1700	-	-	RNP APCH
30	TF	RW29	Y	289 (274.2)		5.1	-	@70	-	-3.0/50	RNP APCH
40	CA	-	-	289 (274.2)	+15.0	-	-	+1000	-	-	RNP APCH
50	DF	OTMIG	-	-		-	L	+3000	-	-	RNP APCH
60	HM	OTMIG	-	019 (004.2)		-	R	+3000	-	-	RNP APCH

## WAYPOINT LIST

RNP RWY 29	
Waypoint Identifier	Coordinates
VIDLI	11°07'44.00"N 060°32'49.77"W
OTMIG	11°02'10.07"N 060°39'21.77"W
TASRU	11°14'11.41"N 060°38'28.16"W
DEBOP	11°08'10.74"N 060°38'54.97"W
VODAN	11°08'32.93"N 060°43'59.32"W
RW29	11°08'55.56"N 060°49'10.92"W

**PIARCO INTERNATIONAL NOTAM OFFICE****AIP  
SUPPLEMENT**

Tele: 1 868 669-4128  
1 868 668-8222 ext 2510  
FAX: 1 868 669 1716  
AFTN: TTPPYNYX  
Email:aimpublication@caa.gov.tt

TRINIDAD & TOBAGO  
CIVIL AVIATION AUTHORITY,  
P.O. BOX 2163, NATIONAL MAIL CENTRE,  
PIARCO  
REPUBLIC OF TRINIDAD AND TOBAGO

**25/24**  
**18 OCT 24**

**AD****25. MAURICE BISHOP (TGPY)****Installation of Passenger Boarding Bridge at Maurice Bishop International Airport****Effective: 241018 to 250131**

Due to the ongoing installation of a passenger boarding bridge at parking position 5, pilots are asked to exercise caution when operating within the vicinity.

AIP SUP 25/24 replaces NOTAM A1293/24.

**END**

Intentionally left blank

**PIARCO INTERNATIONAL NOTAM OFFICE****AIP  
SUPPLEMENT**

Tele: 1 868 669-4128  
1 868 668-8222 ext 2510  
FAX: 1 868 669 1716  
AFTN: TTPPYNYX  
Email: aispublishations@caa.gov.tt

TRINIDAD & TOBAGO  
CIVIL AVIATION AUTHORITY,  
P.O. BOX 2163, NATIONAL MAIL CENTRE,  
PIARCO  
REPUBLIC OF TRINIDAD AND TOBAGO

**24/24**  
**08 OCT 24**

**ENR****24. PIARCO (TTPP)****Model Aircraft Display****Effective: 241008 to 261011**

Model aircraft display at Frederick Settlement within a radius of 1KM centred on 103538N0612337W from SFC to 400FT AGL.

Pilots flying the area are asked to exercise caution.

AIP SUP 24/24 replaces AIP SUP 10/22.

**END**

Intentionally left blank





## PIARCO INTERNATIONAL NOTAM OFFICE

## AIP SUPPLEMENT

Tele: 1 868 669-4128  
1 868 668-8222 ext 2510  
FAX: 1 868 669 1716  
AFTN: TTPPYNYX  
Email:aispublications@caa.gov.tt

TRINIDAD & TOBAGO  
CIVIL AVIATION AUTHORITY,  
P.O. BOX 2163, NATIONAL MAIL CENTRE,  
PIARCO  
REPUBLIC OF TRINIDAD AND TOBAGO

21/24  
27 SEP 24

### **ENR**

#### **21. PIARCO FIR (TTZP)**

#### **INTERIM ROUTINGS TO BE UTILIZED WITHIN THE PIARCO FIR DUE TO THE REMOVAL OF THE UA550, UA551 AND UA561 ROUTES**

##### **Effective: 240927 to 250930**

The reorganization of the Piarco Flight Information Region is being implemented in a phased approach.

Currently, based on collaboration with all stakeholders, the upper airspace has been redesigned taking into account the Performance Based Navigation (PBN) concept. In addition, through the CANSO/IATA/ICAO Free Route Airspace (CIIFRA) initiative, a number of pre-approved optimized routes have been implemented.

The next phase of the airspace optimization project involves the connection of the new/revised upper airspace routes to the lower airspace arrival and departure routes into the aerodromes within the Piarco FIR. The implementation of this phase is expected to take place over 2024/2025.

Aircraft Operators and Flight Dispatchers are urged to please take note of the following:

- Routes implemented in the Piarco FIR which have been incorporated into the Eastern Caribbean AIP (ENR 3.2):
  - UP533
  - UN669
  - UP410
  - UM662
  
- Conventional routes which have been removed from the Piarco FIR:
  - UA550
  - UA551
  - UA561

With regards to flights that previously utilized the UA550, UA551 and UA561 between the Piarco and Maiquetia FIRs, the following are suggested routings to be filed in the interim until the full implementation of the Piarco FIR Airspace Optimization is completed:

(a) Aircraft landing/departing TAPA that previously utilized the UA550, may file: ITEGO DCT DUNTA DCT ANU or the reciprocal.

(b) Aircraft landing/departing TFFR that previously utilized the UA550, may file: ITEGO DCT PPR or the reciprocal.

(c) Aircraft landing/departing TFFF that previously utilized the UA551, may file: ONGAL DCT FOF or the reciprocal.

(d) Aircraft landing/departing TLPL that previously utilized the UA551, may file: ONGAL DCT BNE or the reciprocal

(e) Aircraft landing/departing TGPY that previously utilized the UA561, may file: ILVAS DCT GND or the reciprocal.

(f) Aircraft landing/departing TBPB that previously utilized the UA561, may file: ILVAS DCT BGI or the reciprocal.

(g) Aircraft landing/departing TVSA that previously utilized the UA561, may file: ILVAS DCT SV or the reciprocal.

*NOTE: Notwithstanding the above suggested routings, any flight entering the Piarco FIR from the Maiquetia FIR may file from any waypoint along the Piarco/Maiquetia boundary to a destination aerodrome WITHIN the Piarco FIR.*

Questions or alternative requests regarding these interim procedures can be directed to:  
**Riaaz Mohammed - Manager ANS Planning and Development (rmohammed@caa.gov.tt)**  
**Robert Rooplal - Air Traffic Management Officer (rrooplal@caa.gov.tt)**

AIP SUP 21/24 revises AIP SUP 14/23

END

---

**PIARCO INTERNATIONAL NOTAM OFFICE****AIRAC  
AIP  
SUPPLEMENT**

Tele: 1 868 669-4128  
1 868 668-8222 ext 2510  
FAX: 1 868 669 1716  
AFTN: TTPPYNYX  
Email: aispublications@caa.gov.tt

TRINIDAD & TOBAGO  
CIVIL AVIATION AUTHORITY,  
P.O. BOX 2163, NATIONAL MAIL CENTRE,  
PIARCO  
REPUBLIC OF TRINIDAD AND TOBAGO

19/24  
30 AUG 24

**AD****19. DOUGLAS CHARLES AIRPORT (TDPD)****Extension of RWY 09/27 at the Douglas Charles Airport****Effective: 241003 to PERM**

RWY 09/27 at the Douglas Charles Airport has been extended towards the western end of the runway.

As a result of this extension, the information in the following attachments have been updated:

- Attachment A - Update to data and chart pages.
- Attachment B – Update to Aerodrome Chart – ICAO.
- Attachment C – Update to Aerodrome Obstacle Chart – ICAO Type A - Operating Limitations RWY 09/27.

Please amend the following Eastern Caribbean AIP pages: AD 2.4-2-1, AD 2.4-2-5, AD 2.4-2-13, AD 2.4-2-15, AD 2.4-2-17, AD 2.4-2-18, AD 2.4-2-21, AD 2.4-2-23, AD 2.4-2-25.

**END**

Intentionally left blank

## ATTACHMENT A

In this attachment, only the data that have been changed are available for the respective sub-sections of the AD pages for TDPD. All other information remains unchanged.

Please amend the relevant pages with the data below:

### TDPD AD 2.2 AERODROME GEOGRAPHICAL AND ADMINISTRATIVE DATA

3	Elevation/Reference Temperature	29.3M (96FT) / 31°C
4	MAG VAR/annual change	15.2°W (2024)

### TDPD AD 2.12 RUNWAY PHYSICAL CHARACTERISTICS

Designations RWY NR	Dimensions of RWY (M)	THR coordinates/RWY End Coordinates	Strip Dimension (M)	Remarks
1	3	5	10	12
<b>09</b>	1936 x 45	153235.82N 0611838.56W	1928 x 150	RWY Surface Grooved. THR RWY 09 displaced 405M RESA 90x90
<b>27</b>	1936 x 45		1928 x 150	RWY Surface Grooved. RESA 90x90

### TDPD AD 2.13 DECLARED DISTANCES

RWY designator	TORA (M)	TODA (M)	ASDA (M)	LDA (M)	Remarks
1	2	3	4	5	6
<b>09</b>	1936	2726	1936	1403	RWY 09 THR displaced 405M
<b>27</b>				1808	

### TDPD AD2.14 APPROACH AND RUNWAY LIGHTING

RWY designator	RWY edge LGT LEN, spacing, color, INTST
1	7
<b>09</b>	1936M White LIH
<b>27</b>	1936M White LIH

## ATTACHMENT A

The following updated charts have been provided:

- Aerodrome/Heliport Chart – ICAO page AD 2.4-2-13
- Aerodrome Obstacle Chart – ICAO Type A RWY -09/27 page AD 2.4-2-15.

The Aerodrome elevation to be updated to **96 FT** on the following pages:

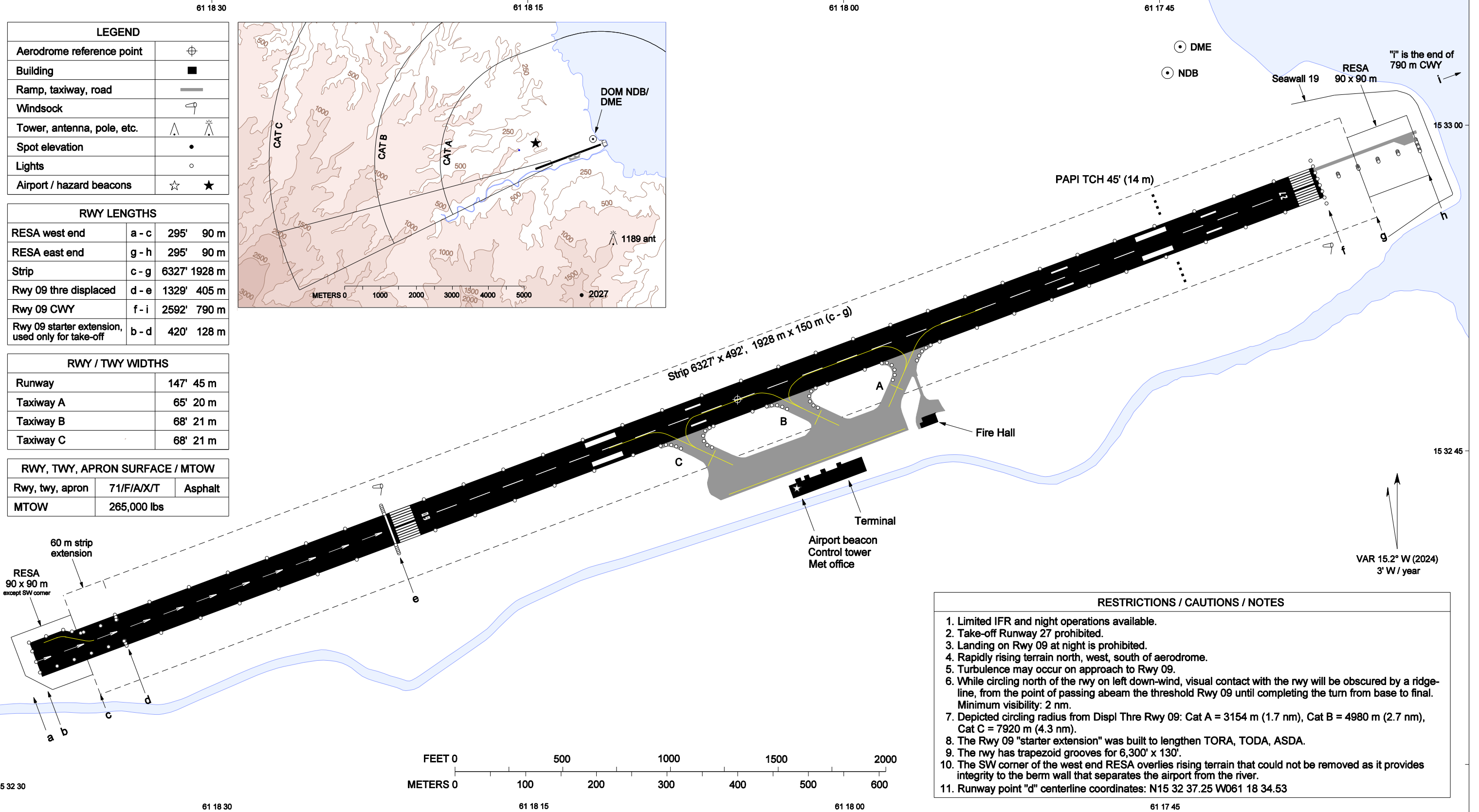
- AD 2.4-2-17/18– TDPD KAROT ONE RNAV (GNSS) Departure
- AD 2.4-2-21 – RNAV (GNSS) Y RWY 27
- AD 2.4-2.23 – RNAV (GNSS) Z RWY 27
- AD 2.4-2-25 – NDB RWY 27

The MAG VAR to be updated to 15.2°W on the following page:

- AD 2.4-2-17/18– TDPD KAROT ONE RNAV (GNSS) Departure

# ATTACHMENT B

<b>AERODROME CHART - ICAO</b>	ARP: N15 32 47.63 W061 18 05.19	AERODROME ELEV: 96	DOUGLAS CHARLES TOWER 118.900 LE RAIZET APPROACH 121.300 (NORTH) LE LAMENTIN APPROACH 121.000 (SOUTH)	DIMENSIONS IN FEET / METERS ELEVATIONS IN FEET BEARINGS ARE MAGNETIC	<b>DOUGLAS CHARLES APT (TDPD)</b> ROSEAU, DOMINICA
-------------------------------	------------------------------------	--------------------	---	--	---



CHANGES: RWY extended to the West, Declared Distances updated, West End RESA updated, RWY and AD Elev adjusted, MAG VAR updated (2024).

RWY	TORA	TODA	ASDA	LDA	START OF TORA/TODA/ASDA	POINT	ELEV	START OF LDA	POINT	ELEV	BEARING	LIGHTING
09	6352' 1936 m (b - f)	8944' 2726 m (b - i)	6352' 1936 m (b - f)	4602' 1403 m (e - f)	N15 32 35.82 W061 18 38.56	b	96' 29.3 m	N15 32 41.78 W061 18 21.74	e	71' 21.7 m	085°	Rwy thre identif, rwy thre, high intensity rwy edge lts (HIRL), rwy end
27	Prohibited	Prohibited	Prohibited	5933' 1808 m (f - d)				N15 32 57.42 W061 17 37.52	f	16' 4.9 m	265°	Approach, PAPI-L/R 3.00°, rwy thre identif, rwy thre, HIRL, rwy end

Intentionally left blank



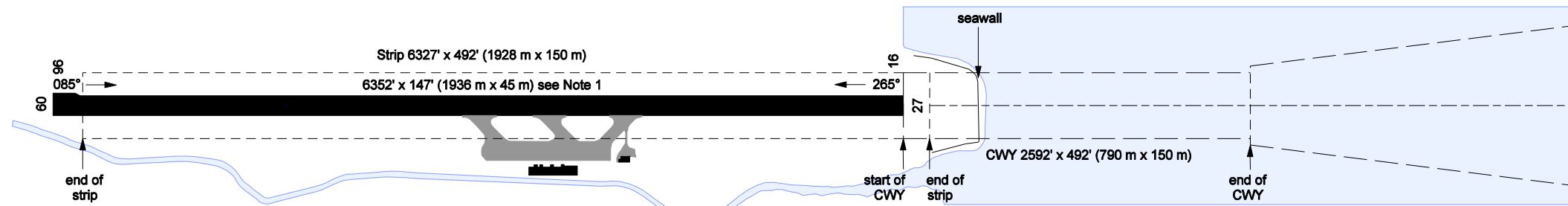
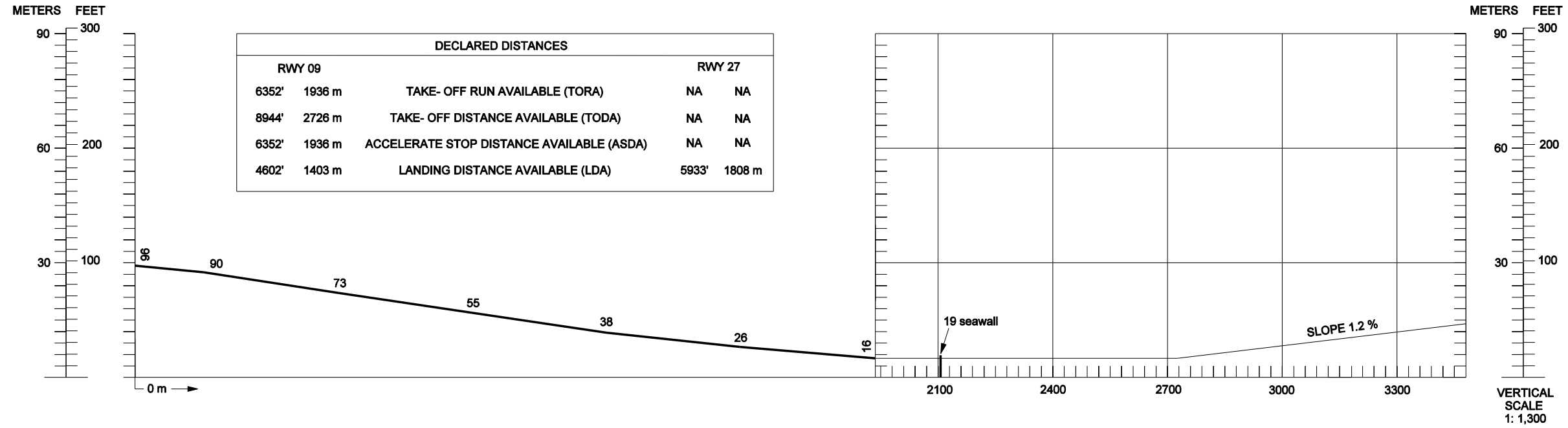
# ATTACHMENT C

**DIMENSIONS IN METERS / FEET  
ELEVATIONS IN METERS / FEET**

**AERODROME OBSTACLE CHART - ICAO  
TYPE A - OPERATING LIMITATIONS RWY 09/27**

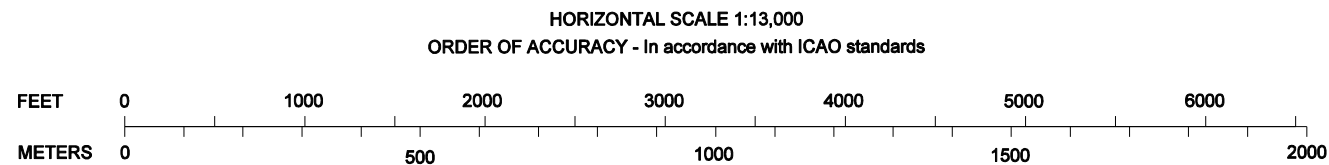
**DOUGLAS CHARLES AIRPORT (TDPD)  
ROSEAU, DOMINICA**

MAGNETIC VARIATION 15° W - JUNE 2024



Note 1: Reflects the Rwy 09 TORA

LEGEND	PLANVIEW	PROFILE
IDENTIFICATION NUMBER	①	
POLE, TOWER, ANTENNA	△	INSIDE OUTSIDE
POLE, TOWER, ANTENNA LIGHTED	△*	①
BUILDING	■	①
TREE, BUSH	*x	



AMENDMENT RECORD		
No.	DATE	ENTERED BY
Original	AIRAC date	Chart provider

CHANGES: RWY extended to the West, Declared Distances updated, RWY and AD Elev adjusted, MAG VAR updated (2024).

Intentionally left blank

**PIARCO INTERNATIONAL NOTAM OFFICE****AIP  
SUPPLEMENT**

Tele: 1 868 669-4128  
1 868 668-8222 ext 2510  
FAX: 1 868 669 1716  
AFTN: TTPPYNYX  
Email: aispublications@caa.gov.tt

TRINIDAD & TOBAGO  
CIVIL AVIATION AUTHORITY,  
P.O. BOX 2163, NATIONAL MAIL CENTRE,  
PIARCO  
REPUBLIC OF TRINIDAD AND TOBAGO

**18/24**  
**19 AUG 24**

**AD****18. PIARCO INTERNATIONAL AIRPORT (TTPP)****NDB 'TRI' UNSERVICEABLE****Effective: 240819 to 250630**

TTPP NDB 'TRI' 382.0KHz unserviceable.

AIP SUP 18/24 replaces NOTAM A1226/24

**END**

Intentionally left blank

**PIARCO INTERNATIONAL NOTAM OFFICE****AIP  
SUPPLEMENT**

Tele: 1 868 669-4128  
1 868 668-8222 ext 2510  
FAX: 1 868 669 1716  
AFTN: TTPPYNYX  
Email:aispublications@caa.gov.tt

TRINIDAD & TOBAGO  
CIVIL AVIATION AUTHORITY,  
P.O. BOX 2163, NATIONAL MAIL CENTRE,  
PIARCO  
REPUBLIC OF TRINIDAD AND TOBAGO

17/24  
01 SEP 24

**AD****17. TERRANCE B. LETTSOME (TUPJ)****Amendments to the Phraseology of the Departure Instructions at the Terrance B. Lettsome International Airport****Effective: 240901 to PERM**

The amended phraseology to the departure instructions shall apply to all flights which have filed IFR Flight Plans departing the Terrance B. Lettsome International Airport:

1. "Fly the Lettsome Departure," in lieu of: 'Fly Runway heading until reaching 1000FT then turn left heading 330°.'
2. "Fly the Franklin Departure," in lieu of: 'Fly Runway heading until reaching 1000FT then turn right heading 180°.'
3. "Fly the Gateway Departure," in lieu of: 'Early left turn heading 180°.'

The following are the departure instructions with the amended phraseology:

**SAN JUAN or ISLA GRANDE RWY 07**

Fly the Lettsome Departure (Runway heading until reaching 1000FT then turn left heading 330°) until reaching 3200FT, then via STT-RTE6-SJU. Maintain 4000FT, expect requested altitude ten (10) minutes after departure . Departure Control Frequency: 132.250MHz or 128.650MHz.

**SAN JUAN or ISLA GRANDE RWY 25**

Fly the Gateway Departure (Early left turn heading 180°) until reaching 3200FT then via STT-RTE6-SJU. Maintain 4000FT, expect requested altitude ten (10) minutes after departure . Departure Control Frequency: 132.250MHz or 128.650MHz.

**ST MAARTEN RWY 07**

Fly the Franklin Departure (Runway heading until reaching 1000FT then turn right heading 180°). Expect Radar vectors to join A638-PJM-TNCM. Maintain 4000FT, expect requested altitude ten (10) minutes after departure . Departure Control Frequency: 132.250MHz or 128.650MHz.

ST MAARTEN RWY 25

Fly the Gateway Departure (Early left turn heading 180°). Expect Radar vectors to join A638-PJM-TNCM. Maintain 4000FT, expect requested altitude ten (10) minutes after departure. Departure Control Frequency: 132.250MHz or 128.650MHz.

ST KITTS or ANTIGUA (FILED BELOW FL160) RWY 07

Fly the Franklin Departure (Runway heading until reaching 1000FT then turn right heading 180°). Expect Radar vectors to join G633-SKB. Maintain 4000FT, expect requested altitude ten (10) minutes after departure. Departure Control Frequency: 132.250MHz or 128.650MHz.

ST KITTS or ANTIGUA (FILED BELOW FL160) RWY 25

Fly the Gateway Departure (Early left turn heading 180°). Expect Radar vectors to join G633-SKB. Maintain 4000FT, expect requested altitude ten (10) minutes after departure. Departure Control Frequency: 132.250MHz or 128.650MHz.

ANTIGUA (FILED FL160 or ABOVE) RWY 07

Fly the Franklin Departure (Runway heading until reaching 1000FT then turn right heading 180°). Expect Radar vectors to join B520-PJM-A517-SKB. Maintain 4000FT, expect requested altitude ten (10) minutes after departure. Departure Control Frequency: 132.250MHz or 128.650MHz.

ANTIGUA (FILED FL160 OR ABOVE) RWY 25

Fly the Gateway Departure (Early left turn heading 180°). Expect Radar vectors to join B520-PJM-A517-SKB. Maintain 4000FT, expect requested altitude ten (10) minutes after departure. Departure Control Frequency: 132.250MHz or 128.650MHz.

Please refer to Eastern Caribbean AIP: TUPJ AD 2.22 Flight Procedures.

END



## PIARCO INTERNATIONAL NOTAM OFFICE

## AIRAC AIP SUPPLEMENT

Tele: 1 868 669-4128  
1 868 668-8222 ext 2510  
FAX: 1 868 669 1716  
AFTN: TTPPYNYX  
Email: aispublications@caa.gov.tt

TRINIDAD & TOBAGO  
CIVIL AVIATION AUTHORITY,  
P.O. BOX 2163, NATIONAL MAIL CENTRE,  
PIARCO  
REPUBLIC OF TRINIDAD AND TOBAGO

15/24  
03 OCT 24

Publication date: 06th August 2024

### **ENR**

#### **15. PIARCO FIR (TTZP)**

#### **Establishment of Waypoint CAIRN on the Common Boundary between the Pointe-A-Pitre (Guadeloupe) Terminal Control Area (TMA) and the Piarco Flight Information Region (TTZP)**

**Effective: 241003 to PERM**

##### 1. Introduction

1.1 The following waypoint has been established on the northeastern boundary of the Pointe-A-Pitre (Guadeloupe) Terminal Control Area (TMA) and the Piarco FIR:

**CAIRN 16 55 36N 060 34 57W.**

This waypoint will facilitate aircraft exiting the Pointe-A-Pitre (Guadeloupe) Terminal Control Area (TMA) via waypoint CITRS (18 00 00N 059 00 00W) and east.

##### 2. Procedures

###### 2.1 Arriving Aircraft

2.1.1 Aircraft inbound to Le Raizet International Airport, Guadeloupe (TFFR) from waypoint BNJEE (18 00 00N 060 00 00W) shall plan a flight route to enter Guadeloupe TMA at waypoint BOSET.

###### 2.2 Departing Aircraft

2.2.1 Aircraft departing the Le Raizet International Airport, Guadeloupe (TFFR) leaving the TTZP FIR at waypoint CITRS (18 00 00N 059 00 00W) or east, shall plan a flight route to exit Guadeloupe TMA at waypoint CAIRN.

Please amend the following pages of the Eastern Caribbean AIP: ENR 4.4-2, ENR 6.1-1, ENR 6.1-3, ENR 6.1-7 and ENR 6.1-9.

END

Intentionally left blank





Intentionally left blank

**PIARCO INTERNATIONAL NOTAM OFFICE****AIP  
SUPPLEMENT**

Tele: 1 868 669-4128  
1 868 668-8222 ext 2510  
FAX: 1 868 669 1716  
AFTN: TTPPYNYX  
Email: aispublications@caa.gov.tt

TRINIDAD & TOBAGO  
CIVIL AVIATION AUTHORITY,  
P.O. BOX 2163, NATIONAL MAIL CENTRE,  
PIARCO  
REPUBLIC OF TRINIDAD AND TOBAGO

14/24  
15 JUL 24

**GEN****14. St. Vincent and the Grenadines****Airport Service Charge amended for Argyle International Airport (TVSA), J.F. Mitchell Airport (TVSB), Canouan Airport (TVSC) and Union Airport (TVSU)****Effective: 240715 to PERM**

The Airport Service Charge (Passenger Service) is now \$150.00 E.C. or \$55.00 USD.

Please amend the Eastern Caribbean AIP page GEN 4.1-19

**END**

Intentionally left blank

**PIARCO INTERNATIONAL NOTAM OFFICE****AIP  
SUPPLEMENT**

Tele: 1 868 669-4128  
1 868 668-8222 ext 2510  
FAX: 1 868 669 1716  
AFTN: TTPPYNYX  
Email: aispublications@caa.gov.tt

TRINIDAD & TOBAGO  
CIVIL AVIATION AUTHORITY,  
P.O. BOX 2163, NATIONAL MAIL CENTRE, PIARCO  
REPUBLIC OF TRINIDAD AND TOBAGO

07/24  
28 MAR 24

**AD****07. JOHN A. OSBORNE INTERNATIONAL AIRPORT (TRPG)****AIRPORT RESTRICTION AT JOHN A. OSBORNE INTERNATIONAL AIRPORT****Effective: 240328 TO 250328**

By the United Kingdom Department for Transport:

No aircraft which is owned, chartered or operated by a person connected with Russia, or which is registered in Russia shall fly in Montserrat's airspace, including in the airspace above the territorial sea. This regulation does not apply to any aircraft flying in accordance with the permission of the UK Secretary of State for Transport.

Permissions available from Air Safety Support International (ASSI) at [enquiries@airsafety.aero](mailto:enquiries@airsafety.aero)

**END**

Intentionally left blank

**PIARCO INTERNATIONAL NOTAM OFFICE****AIP  
SUPPLEMENT**

Tele: 1 868 669-4128  
1 868 668-8222 ext 2510  
FAX: 1 868 669 1716  
AFTN: TTPPYNYX  
Email:aispublications@caa.gov.tt

TRINIDAD & TOBAGO  
CIVIL AVIATION AUTHORITY,  
P.O. BOX 2163, NATIONAL MAIL CENTRE, PIARCO  
REPUBLIC OF TRINIDAD AND TOBAGO

**06/24**  
**21 MAR 24**

**AD****06. DOUGLAS CHARLES INTERNATIONAL AIRPORT (TDPD)****CHANGE IN AERODROME OPERATING HOURS AT DOUGLAS CHARLES INTERNATIONAL AIRPORT****Effective: 240321 TO 250321**

Aerodrome operating hours are now 1000 to 2359 UTC. Prior notice is required for operations occurring after 0000 UTC.

**END**

Intentionally left blank



**PIARCO INTERNATIONAL NOTAM OFFICE****AIP  
SUPPLEMENT**

Tele: 1 868 669-4128  
1 868 668-8222 ext 2510  
FAX: 1 868 669 1716  
AFTN: TTPPYNYX  
Email: aispublications@caa.gov.tt

TRINIDAD & TOBAGO  
CIVIL AVIATION AUTHORITY,  
P.O. BOX 2163, NATIONAL MAIL CENTRE, PIARCO  
REPUBLIC OF TRINIDAD AND TOBAGO

**05/24**  
**20 MAR 24**

**AD****05. CLAYTON J. LLOYD INTERNATIONAL AIRPORT (TQPF)****PARKING STAND DISCONTINUED AT CLAYTON J. LLOYD INTERNATIONAL AIRPORT****Effective: 240320 TO 251231**

Parking Stand 11 discontinued on main apron.

Please amend E/CAR AIP AD 2.1-1-13 Aerodrome Chart.

AIP SUP 05/24 replaces NOTAM A0479/24.

**END**

Intentionally left blank

**PIARCO INTERNATIONAL NOTAM OFFICE****AIP  
SUPPLEMENT**

Tele: 1 868 669-4128  
1 868 668-8222 ext 2510  
FAX: 1 868 669 1716  
AFTN: TTPPYNYX  
Email: aispublications@caa.gov.tt

TRINIDAD & TOBAGO  
CIVIL AVIATION AUTHORITY,  
P.O. BOX 2163, NATIONAL MAIL CENTRE, PIARCO  
REPUBLIC OF TRINIDAD AND TOBAGO

**04/24**  
**19 MAR 24**

**AD****04. CLAYTON J. LLOYD INTERNATIONAL AIRPORT (TQPF)****AIRPORT RESTRICTION AT CLAYTON J. LLOYD INTERNATIONAL AIRPORT****Effective: 240319 TO 250319**

By the United Kingdom Department for Transport:

No aircraft which is owned, chartered or operated by a person connected with Russia, or which is registered in Russia shall fly in Anguilla's airspace, including in the airspace above the territorial sea. This regulation does not apply to any aircraft flying in accordance with the permission of the UK Secretary of State for Transport.

Permissions available from Air Safety Support International (ASSI) at [enquiries@airsafety.aero](mailto:enquiries@airsafety.aero)

**END**

Intentionally left blank