

**PIARCO INTERNATIONAL NOTAM OFFICE****AIP  
SUPPLEMENT**

Tele: 1 868 669-4128  
1 868 668-8222 ext 2510  
FAX: 1 868 669 1716  
AFTN: TTPPYNYX  
Email:aimpublication@caa.gov.tt

TRINIDAD & TOBAGO  
CIVIL AVIATION AUTHORITY,  
P.O. BOX 2163, NATIONAL MAIL CENTRE,  
PIARCO  
REPUBLIC OF TRINIDAD AND TOBAGO

**27/24**  
**28 NOV 24**

**AD****27. V.C. BIRD INTERNATIONAL AIRPORT (TAPA)****Establishment of Area Chart - ICAO V.C. Bird TMA****Effective: 241128 to PERM**

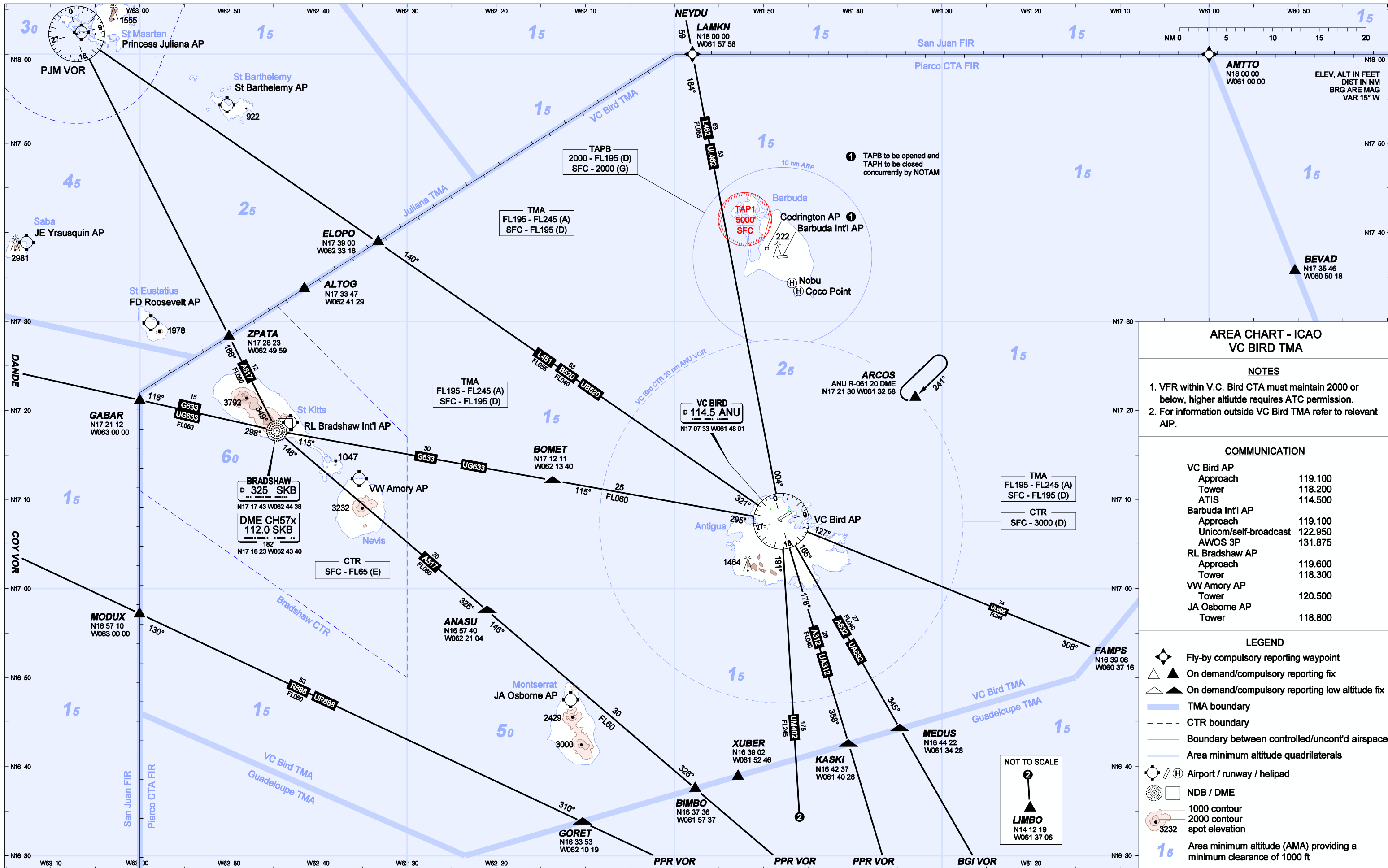
A new area chart has been established for V.C. Bird TMA.

Please see Attachment A for the new chart.

**END**

Intentionally left blank

ATTACHMENT A



AREA CHART - ICAO  
VC BIRD TMA

NOTES

1. VFR within V.C. Bird CTA must maintain 2000 or below, higher altitude requires ATC permission.
2. For information outside VC Bird TMA refer to relevant AIP.

COMMUNICATION

VC Bird AP	
Approach	119.100
Tower	118.200
ATIS	114.500
Barbuda Int'l AP	
Approach	119.100
Unicom/self-broadcast	122.950
AWOS 3P	131.875
RL Bradshaw AP	
Approach	119.600
Tower	118.300
VW Amory AP	
Tower	120.500
JA Osborne AP	
Tower	118.800

LEGEND

- Fly-by compulsory reporting waypoint
- On demand/compulsory reporting fix
- On demand/compulsory reporting low altitude fix
- TMA boundary
- CTR boundary
- Boundary between controlled/uncont'd airspace
- Area minimum altitude quadrilaterals
- Airport / runway / helipad
- NDB / DME
- 1000 contour
- 2000 contour
- spot elevation
- Area minimum altitude (AMA) providing a minimum clearance of 1000 ft

Intentionally left blank