

**PIARCO INTERNATIONAL NOTAM OFFICE****AIP
SUPPLEMENT**

Tele: 1 868 669-4128
1 868 668-8222 ext 2510
FAX: 1 868 669 1716
AFTN: TTPPYNYX
Email:aimpublication@caa.gov.tt

TRINIDAD & TOBAGO
CIVIL AVIATION AUTHORITY,
P.O. BOX 2163, NATIONAL MAIL CENTRE,
PIARCO
REPUBLIC OF TRINIDAD AND TOBAGO

26/24
28 NOV 24

AD**26. PIARCO INTERNATIONAL AIRPORT (TTPP) AND A.N.R. ROBINSON INTERNATIONAL AIRPORT (TTCP)****TTPP RNAV (GNSS) RWY 10, TTPP RNAV (GNSS) RWY 28, TTCP RNAV (GNSS) RWY 11 and TTCP RNAV (GNSS) RWY 29 Charts Amended****Effective: 241128 to PERM**

The following changes have been incorporated into the attached Piarco RNAV (GNSS) RWY 10 chart, Piarco RNAV (GNSS) RWY 28 chart, A.N.R. Robinson RNAV (GNSS) RWY 11 chart and A.N.R. Robinson RNAV (GNSS) RWY 29 chart, and relevant verso pages:

- Chart identification from RNAV (GNSS) to RNP;
- PBN requirement box in profile view;
- Removal of asterisk (*) from TTPP verso tables for waypoints LEXOR, TALUS, BOSAT, DANON and removal of asterisk note, "**previous waypoint identifier with updated coordinates*";
- Removal of asterisk (*) from TTCP verso tables for waypoints SASIM, NOTEL, DEBOP, VODAN and removal of asterisk note, "**previous waypoint identifier with updated coordinates*".

Please see attachments A, B, C and D for updated charts for TTPP and TTCP.

Please amend the Eastern Caribbean AIP pages AD 2.10-1-33, AD 2.10-1-34, AD 2.10-1-35, AD 2.10-1-36, AD 2.10-2-31, AD 2.10-2-32, AD 2.10-2-33, AD 2.10-2-34

END

Intentionally left blank

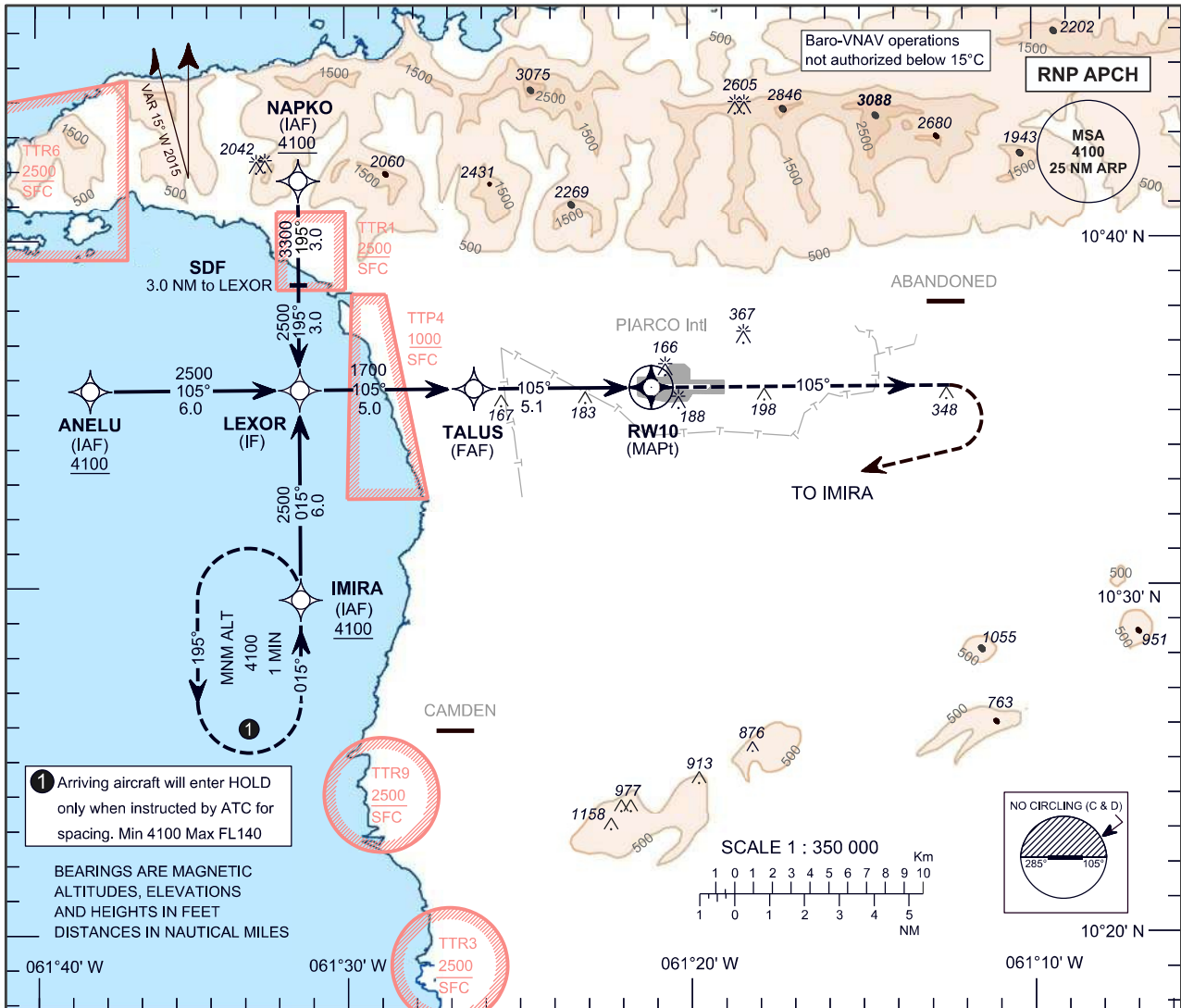
ATTACHMENT A

**INSTRUMENT
APPROACH
CHART - ICAO**

AERODROME ELEV 58 ft
HEIGHTS RELATED TO
THR RWY 10 - ELEV 30 ft

PIARCO APP 119,000, 119,550
PIARCO TWR 118,100
PIARCO ATIS 126,700

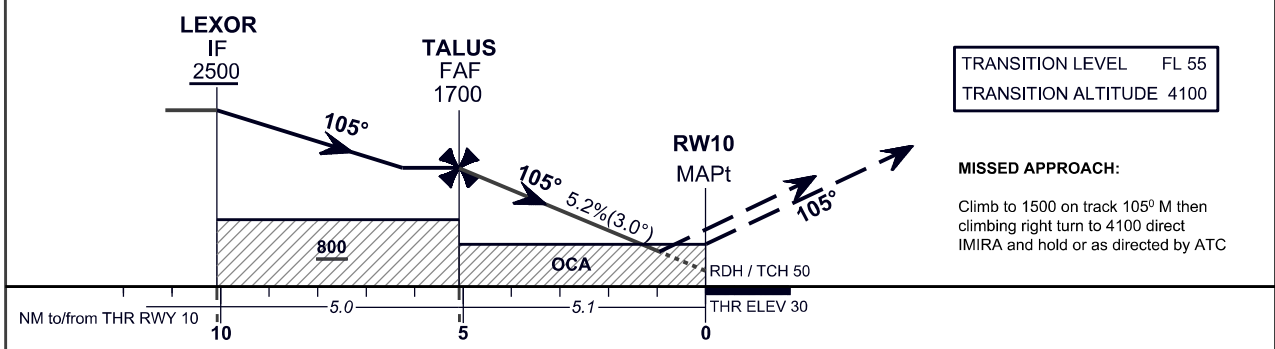
**PORT OF SPAIN/
PIARCO Intl (TTPP)**
RNP RWY 10



1 Arriving aircraft will enter HOLD only when instructed by ATC for spacing. Min 4100 Max FL140

BEARINGS ARE MAGNETIC
ALTITUDES, ELEVATIONS
AND HEIGHTS IN FEET
DISTANCES IN NAUTICAL MILES

NM to NEXT WPT	RW10	2	3	4	5
ALTITUDE		720	1040	1360	1680



TRANSITION LEVEL FL 55
TRANSITION ALTITUDE 4100

MISSED APPROACH:
Climb to 1500 on track 105° M then climbing right turn to 4100 direct IMIRA and hold or as directed by ATC

OCA (OCH)	A	B	C	D
LNAV		430 (400)		
LNAV/VNAV		350 (320)		
*CIRCLING	670	670	710	830
*CIRCLING NOT AUTHORIZED NORTH OF AD (CAT C & D)				

Ground Speed	kt	70	90	100	120	140	160
Rate of descent FAF-MAPt 3.0°(5.2%)	ft/min	372	478	531	637	743	849

TABULAR DESCRIPTION

RNP RWY 10											
Serial Number	Path Descriptor	Waypoint Identifier	Fly Over	Course °M (°T)	Magnetic Variation	Distance (NM)	Turn Direction	Altitude (ft.)	Speed Limit (kt.)	VPA/TCH	Navigation Specification
10	IF	ANELU	-	-	-	-	-	+4100	-	-	RNP APCH
20	TF	LEXOR	-	105 (89.8)	-	6.0	-	+2500	-	-	RNP APCH
10	IF	IMIRA	-	-	-	-	-	+4100	-	-	RNP APCH
20	TF	LEXOR	-	015 (359.8)	-	6.0	-	+2500	-	-	RNP APCH
10	IF	NAPKO	-	-	-	-	-	+4100	-	-	RNP APCH
20	TF	LEXOR	-	195 (179.8)	-	6.0	-	+2500	-	-	RNP APCH
10	IF	LEXOR	-	-	-	-	-	+2500	-	-	RNP APCH
20	TF	TALUS	-	105 (89.8)	-	5.0	-	@1700	-	-	RNP APCH
30	TF	RW10	Y	105 (89.8)	-	5.1	-	@80	-	-3.0/50	RNP APCH
40	CA	-	-	105 (89.8)	+15.0	-	-	+1500	-	-	RNP APCH
50	DF	IMIRA	-	-	-	-	R	+4100	-	-	RNP APCH
60	HM	IMIRA	-	015 (359.8)	-	-	L	+4100	-	-	RNP APCH

WAYPOINT LIST

RNP RWY 10	
Waypoint Identifier	Coordinates
ANELU	10°35'39.77"N 061°37'26.83"W
IMIRA	10°29'39.49"N 061°31'20.17"W
NAPKO	10°41'42.79"N 061°31'22.42"W
LEXOR	10°35'41.14"N 061°31'21.29"W
TALUS	10°35'42.19"N 061°26'16.67"W
RW10	10°35'43.18"N 061°21'06.69"W
(Stepdown Fix) - 3.0 NM to LEXOR	10° 38' 41.97" N 061° 31' 21.85"W

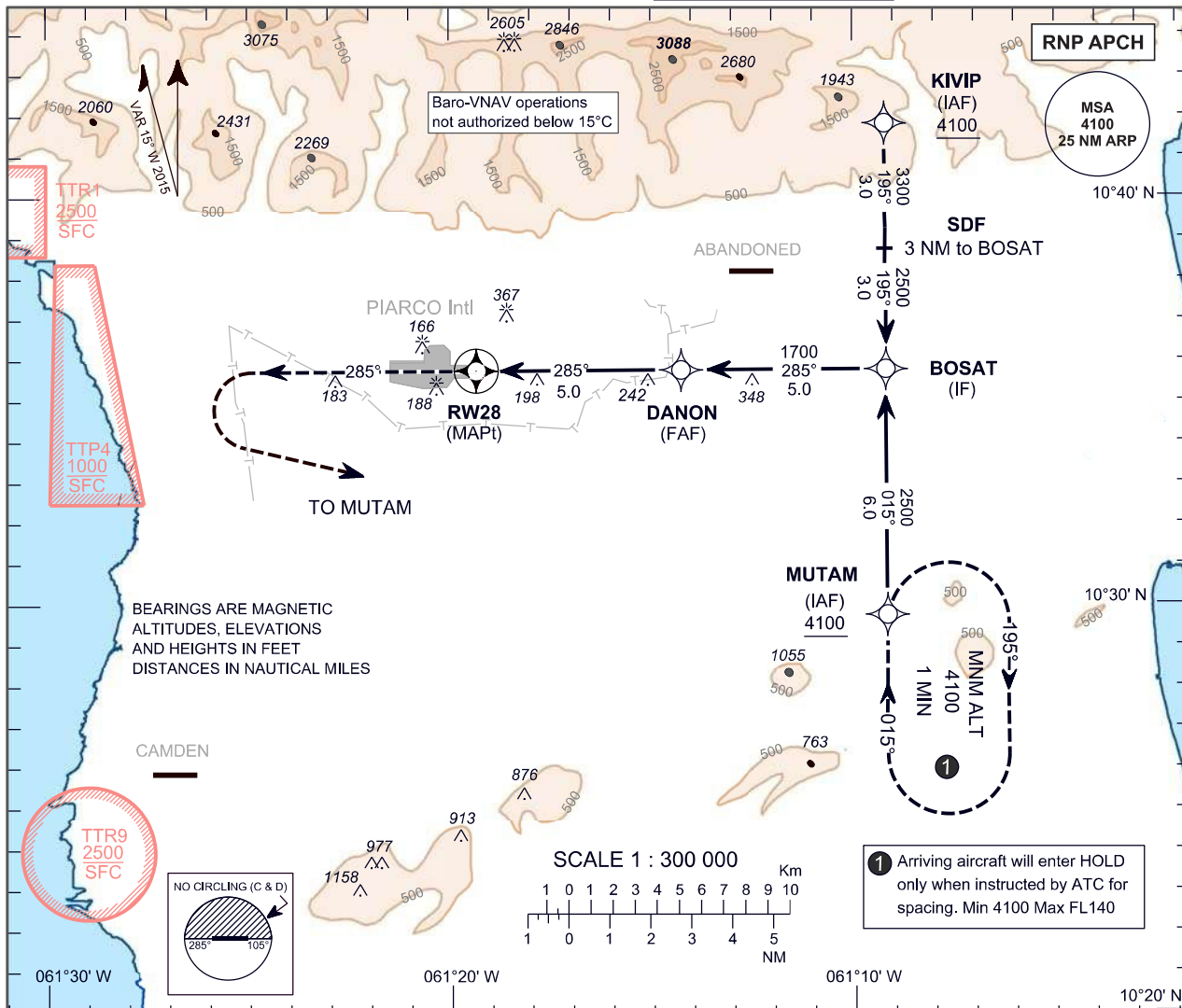
ATTACHMENT B

**INSTRUMENT
APPROACH
CHART - ICAO**

AERODROME ELEV 58 ft
HEIGHTS RELATED TO
THR RWY 28 - ELEV 58 ft

PIARCO APP 119.000, 119.550
PIARCO TWR 118.100
PIARCO ATIS 126.700

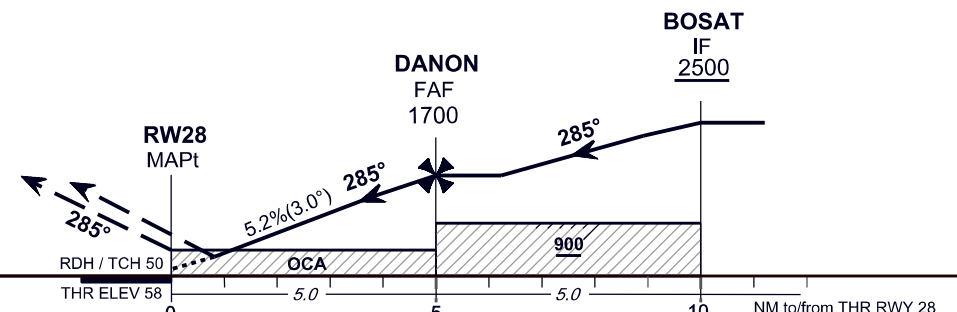
**PORT OF SPAIN/
PIARCO Intl (TTPP)**
RNP RWY 28



NM to NEXT WPT	RW28	2	3	4	5
ALTITUDE		750	1070	1390	1700

TRANSITION LEVEL FL 55
TRANSITION ALTITUDE 4100

MISSED APPROACH:
Climb to 1000 on track 285° M then climbing left turn to 4100 direct MUTAM and hold or as directed by ATC



OCA (OCH)	A	B	C	D
LNAV	490 (432)			
LNAV/VNAV	360 (302)			
*CIRCLING	670	670	710	830
*CIRCLING NOT AUTHORIZED NORTH OF AD (CAT C & D)				

Ground Speed	kt	70	90	100	120	140	160
Rate of descent FAF-MAPt 3.0°(5.2%)	ft/min	372	478	531	637	743	849

TABULAR DESCRIPTION

RNP RWY 28											
Serial Number	Path Descriptor	Waypoint Identifier	Fly Over	Course °M (°T)	Magnetic Variation	Distance (NM)	Turn Direction	Altitude (ft)	Speed Limit (kt)	VPA/TCH	Navigation Specification
10	IF	KIVIP	-	-	-	-	-	+4100	-	-	RNP APCH
20	TF	BOSAT	-	195 (179.8)	-	6.0	-	+2500	-	-	RNP APCH
10	IF	MUTAM	-	-	-	-	-	+4100	-	-	RNP APCH
20	TF	BOSAT	-	015 (359.8)	-	6.0	-	+2500	-	-	RNP APCH
10	IF	BOSAT	-	-	-	-	-	+2500	-	-	RNP APCH
20	TF	DANON	-	285 (269.8)	-	5.0	-	@1700	-	-	RNP APCH
30	TF	RW28	Y	285 (089.8)	-	5.0	-	@108	-	-3.0/50	RNP APCH
40	CA	-	-	285 (269.8)	+15.0	-	-	+1000	-	-	RNP APCH
50	DF	MUTAM	-	-	-	-	L	+4100	-	-	RNP APCH
60	HM	MUTAM	-	015 (359.8)	-	-	R	+4100	-	-	RNP APCH

WAYPOINT LIST

RNP RWY 28	
Waypoint Identifier	Coordinates
KIVIP	10°41'46.78"N 061°09'13.25"W
MUTAM	10°29'43.48"N 061°09'11.07"W
BOSAT	10°35'45.13"N 061°09'12.16"W
DANON	10°35'44.35"N 061°14'16.78"W
RW28	10°35'43.50"N 061°19'21.40"W
(Stepdown Fix) - 3.0 nm to BOSAT	10°38'45.96"N 061°09'12.71"W

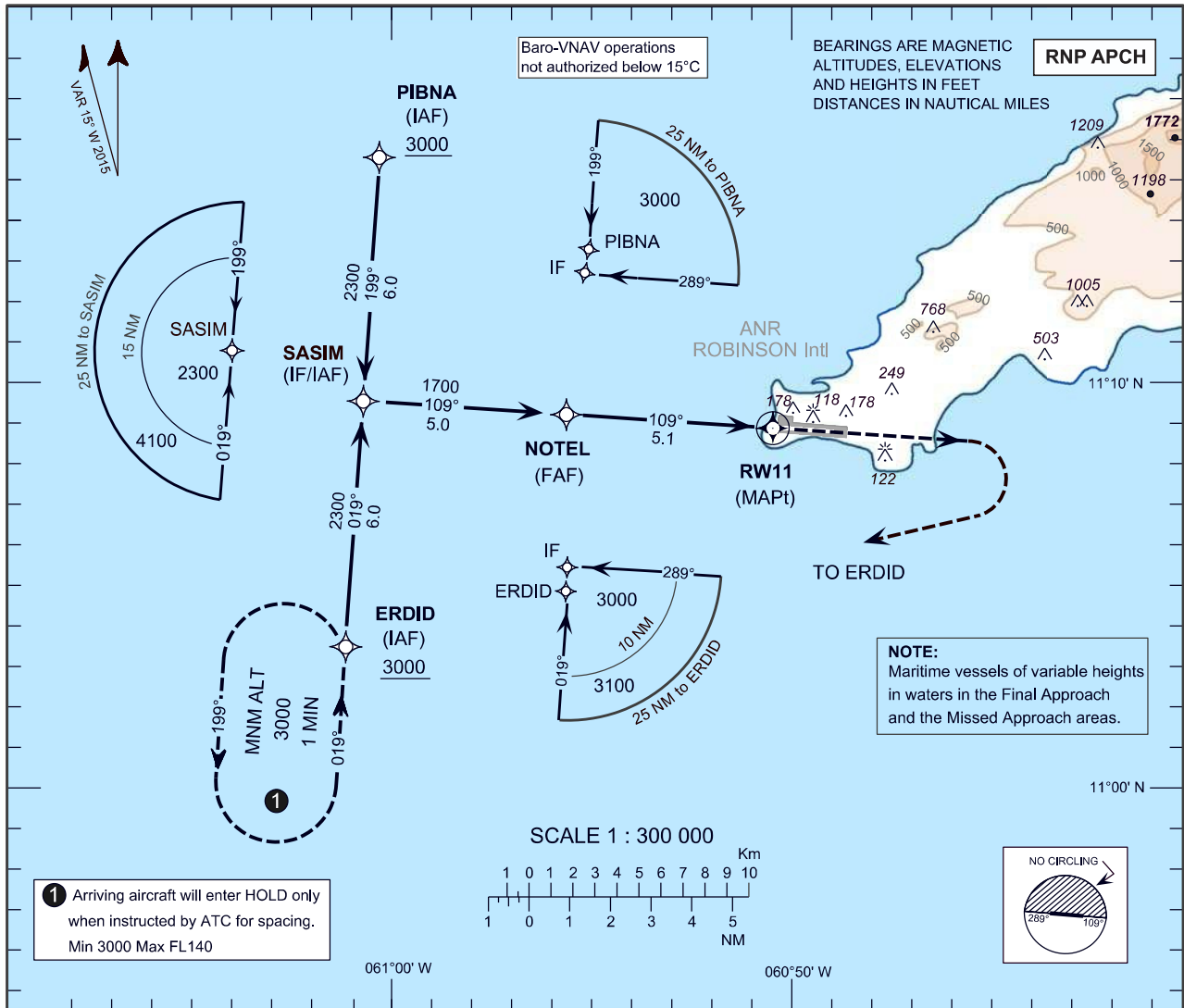
ATTACHMENT C

**INSTRUMENT
APPROACH
CHART - ICAO**

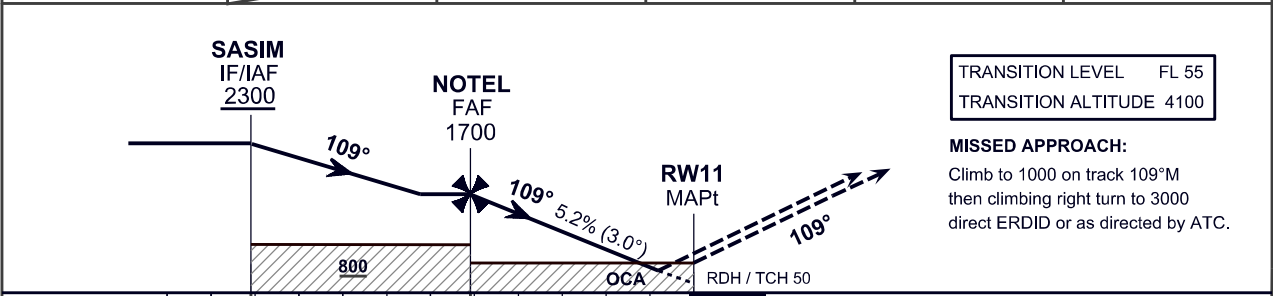
AERODROME ELEV 38 ft
HEIGHTS RELATED TO
DISP THR RWY 11- ELEV 29 ft

PIARCO APP 119.000, 119.550
ROBINSON TWR 118.400
ROBINSON ATIS 132.200

**SCARBOROUGH/
A.N.R. ROBINSON Intl (TTCP)**
RNP RWY 11



NM to NEXT WPT	RW11	2	3	4	5
ALTITUDE		720	1040	1360	1680



NM to/from DISP THR RWY 11	10	5.0	5	5.1	0	THR ELEV 29
----------------------------	----	-----	---	-----	---	-------------

OCA (OCH)	A	B	C	D
LNAV		500 (471)		
LNAV/VNAV		340 (311)		
*CIRCLING	550	550	650	730
*CIRCLING NOT AUTHORIZED NORTH OF AD (ALL CATs)				

Ground Speed	kt	70	90	100	120	140	160
Rate of descent FAF-MAPt 3.0°(5.2%)	ft/min	372	478	531	637	743	849

TABULAR DESCRIPTION

RNP RWY 11											
Serial Number	Path Descriptor	Waypoint Identifier	Fly Over	Course °M (°T)	Magnetic Variation	Distance (NM)	Turn Direction	Altitude (ft)	Speed Limit (kt)	VPA/TCH	Navigation Specification
10	IF	ERDID	-	-	-	-	-	+3000	-	-	RNP APCH
20	TF	SASIM	-	019 (004.2)	-	6.0	-	+2300	-	-	RNP APCH
10	IF	PIBNA	-	-	-	-	-	+3000	-	-	RNP APCH
20	TF	SASIM	-	199 (184.2)	-	6.0	-	+2300	-	-	RNP APCH
10	IF	SASIM	-	-	-	-	-	+2300	-	-	RNP APCH
20	TF	NOTEL	-	109 (094.2)	-	5.0	-	@1700	-	-	RNP APCH
30	TF	RW11	Y	109 (094.2)	-	5.1	-	@79	-	-3.0/50	RNP APCH
40	CA	-	-	109 (094.2)	+15.0	-	-	+1000	-	-	RNP APCH
50	DF	ERDID	-	-	-	-	R	+3000	-	-	RNP APCH
60	HM	ERDID	-	019 (004.2)	-	-	L	+3000	-	-	RNP APCH

WAYPOINT LIST

RNP RWY 11	
Waypoint Identifier	Coordinates
ERDID	11°03'45.02"N 061°01'12.49"W
PIBNA	11°15'46.36"N 061°00'18.93"W
SASIM	11°09'45.69"N 061°00'45.72"W
NOTEL	11°09'23.78"N 060°55'41.33"W
RW11	11°09'01.39"N 060°50'31.40"W

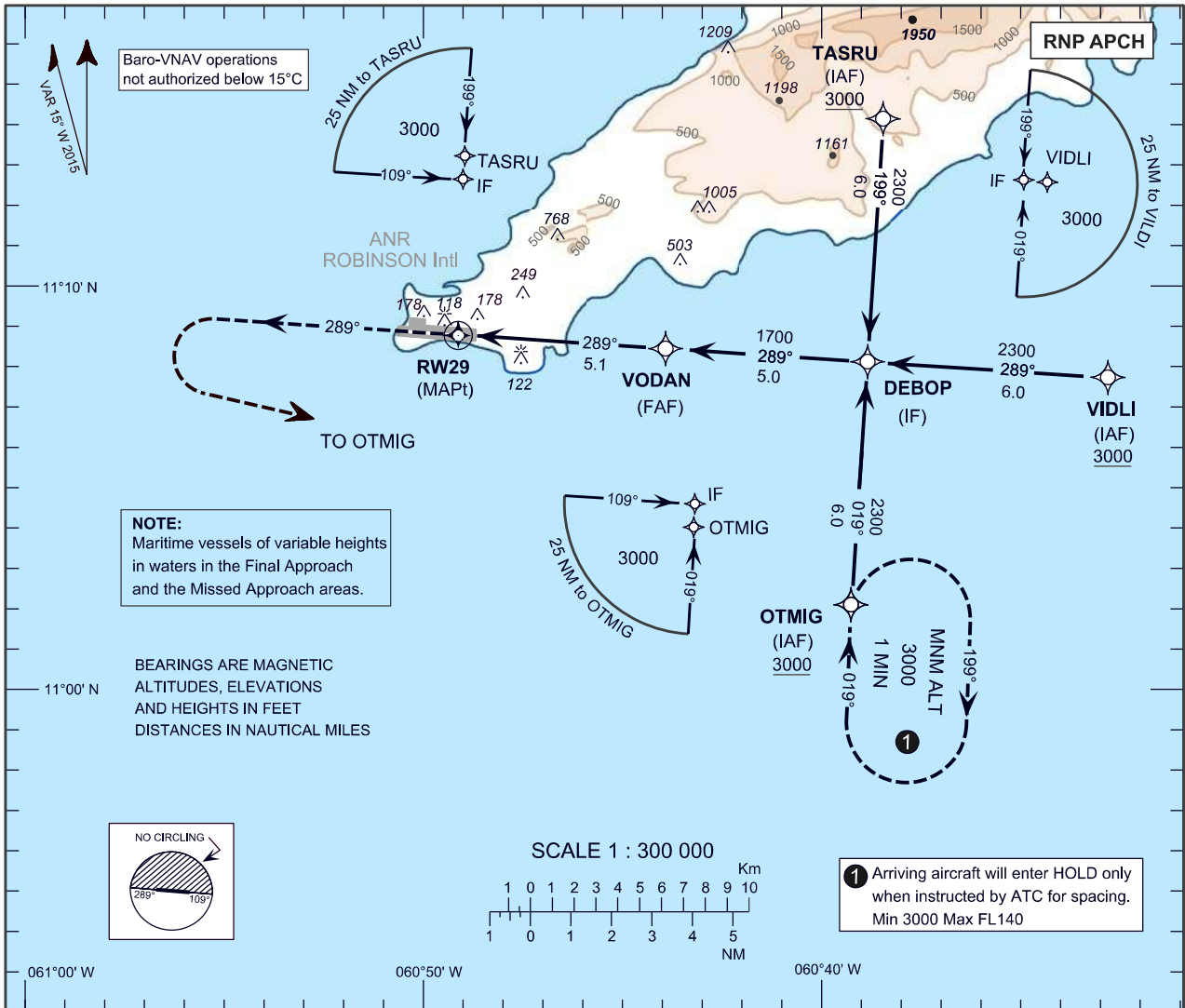
ATTACHMENT D

**INSTRUMENT
APPROACH
CHART - ICAO**

AERODROME ELEV 38 ft
HEIGHTS RELATED TO
THR RWY 29 - ELEV 20 ft

PIARCO APP 119.000, 119.550
ROBINSON TWR 118.400
ROBINSON ATIS 132.200

**SCARBOROUGH/
A.N.R. ROBINSON Intl (TTCP)**
RNP RWY 29

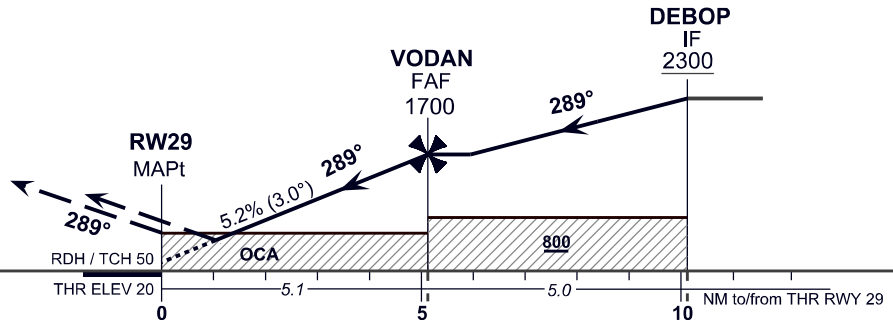


NM to NEXT WPT	RW29	2	3	4	5
ALTITUDE		710	1030	1350	1670

TRANSITION LEVEL FL 55
TRANSITION ALTITUDE 4100

MISSED APPROACH:

Climb to 1000 on track 289°M then climbing left turn to 3000 direct OTMIG or as directed by ATC.



OCA (OCH)	A	B	C	D
LNAV	500 (480)			
LNAV/VNAV	340 (320)			
*CIRCLING	550	550	650	730
*CIRCLING NOT AUTHORIZED NORTH OF AD (ALL CATs)				

Ground Speed	kt	70	90	100	120	140	160
Rate of descent	ft/min	372	478	531	637	743	849

FAF-MAPt 3.0°(5.2%)

TABULAR DESCRIPTION

RNP RWY 29											
Serial Number	Path Descriptor	Waypoint Identifier	Fly Over	Course °M (°T)	Magnetic Variation	Distance (NM)	Turn Direction	Altitude (ft.)	Speed Limit (kt.)	VPA/TCH	Navigation Specification
10	IF	VIDLI	-	-		-	-	+3000	-	-	RNP APCH
20	TF	DEBOP	-	289 (274.2)		6.0	-	+2300	-	-	RNP APCH
10	IF	TASRU	-	-		-	-	+3000	-	-	RNP APCH
20	TF	DEBOP	-	199 (184.2)		6.0	-	+2300	-	-	RNP APCH
10	IF	OTMIG	-	-		-	-	+3000	-	-	RNP APCH
20	TF	DEBOP	-	019 (004.2)		6.0	-	+2300	-	-	RNP APCH
10	IF	DEBOP	-	-		-	-	+2300	-	-	RNP APCH
20	TF	VODAN	-	289 (274.2)		5.0	-	@1700	-	-	RNP APCH
30	TF	RW29	Y	289 (274.2)		5.1	-	@70	-	-3.0/50	RNP APCH
40	CA	-	-	289 (274.2)	+15.0	-	-	+1000	-	-	RNP APCH
50	DF	OTMIG	-	-		-	L	+3000	-	-	RNP APCH
60	HM	OTMIG	-	019 (004.2)		-	R	+3000	-	-	RNP APCH

WAYPOINT LIST

RNP RWY 29	
Waypoint Identifier	Coordinates
VIDLI	11°07'44.00"N 060°32'49.77"W
OTMIG	11°02'10.07"N 060°39'21.77"W
TASRU	11°14'11.41"N 060°38'28.16"W
DEBOP	11°08'10.74"N 060°38'54.97"W
VODAN	11°08'32.93"N 060°43'59.32"W
RW29	11°08'55.56"N 060°49'10.92"W