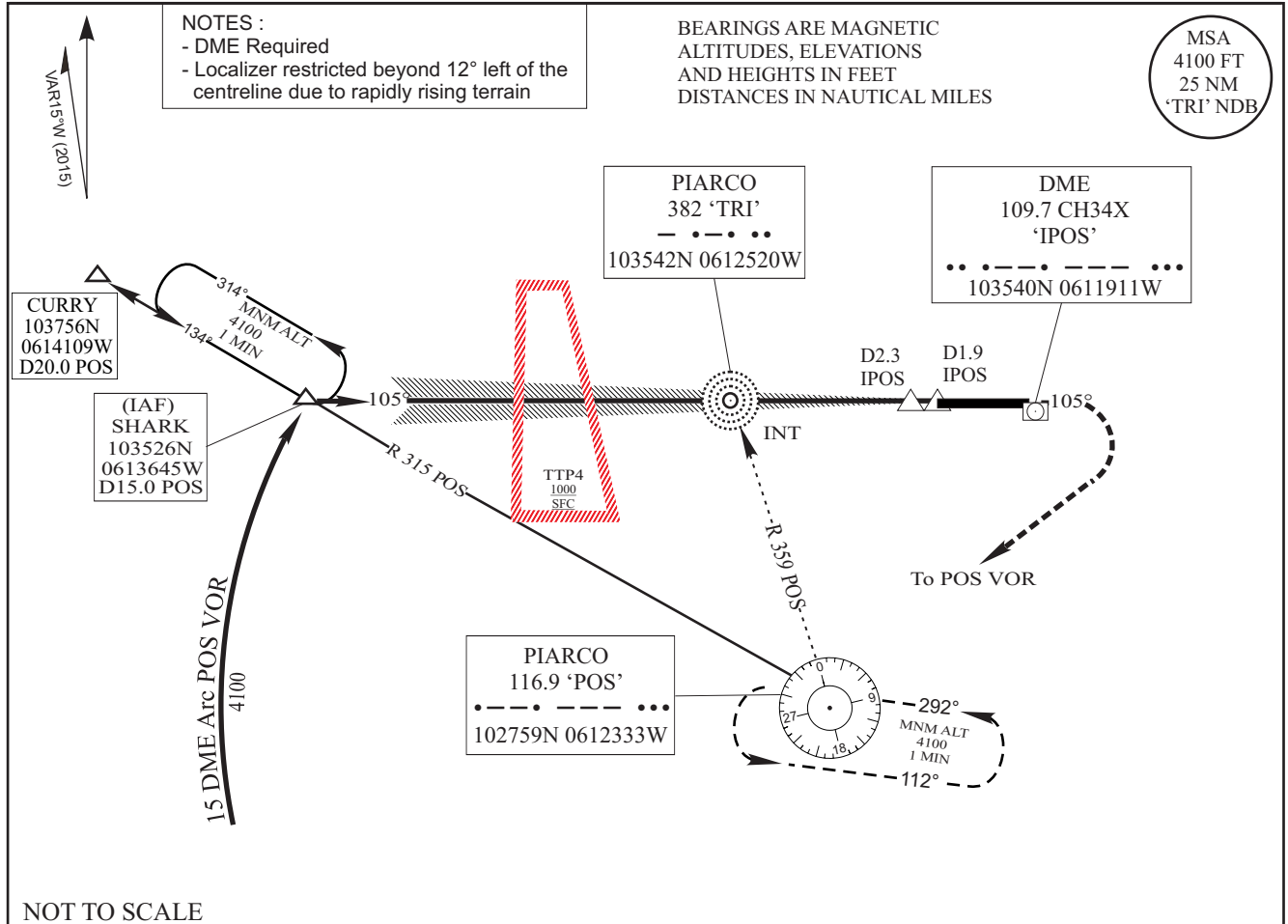


**INSTRUMENT
APPROACH
CHART - ICAO**

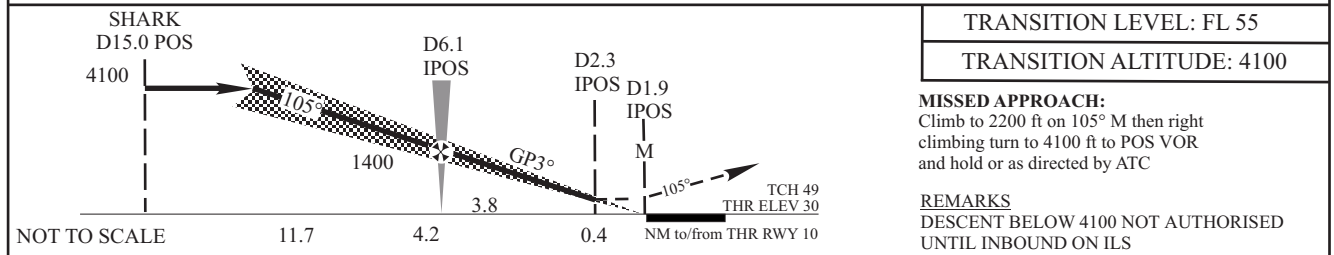
AERODROME ELEVATION 58 FT
HEIGHTS RELATED TO
THR RWY 10 - ELEV 30

APP 119.000, 119.550
TWR 118.100
GND 121.900
ATIS 126.700

**PORT OF SPAIN/
PIARCO Intl (TTPP)
VOR/ILS RWY 10**



NOT TO SCALE



TRANSITION LEVEL: FL 55
TRANSITION ALTITUDE: 4100
MISSED APPROACH:
Climb to 2200 ft on 105° M then right climbing turn to 4100 ft to POS VOR and hold or as directed by ATC
REMARKS
DESCENT BELOW 4100 NOT AUTHORISED UNTIL INBOUND ON ILS

| OCA (H) | | A | B | C | D | | | |
|----------------------|---------|--------------------------|------|------|------|------|------|------|
| STRAIGHT-IN APPROACH | CAT 1 | 265 (235) | | | | | | |
| | GP INOP | 530 (500) | | | | | | |
| | | Ground Speed (kt) | 70 | 90 | 100 | 120 | 140 | 160 |
| | | Min: Sec | 3:36 | 2:48 | 2:31 | 2:06 | 1:48 | 1:34 |
| | | Rate of Descent (ft/min) | 376 | 484 | 538 | 645 | 753 | 860 |

CHANGES: Radials adjusted.