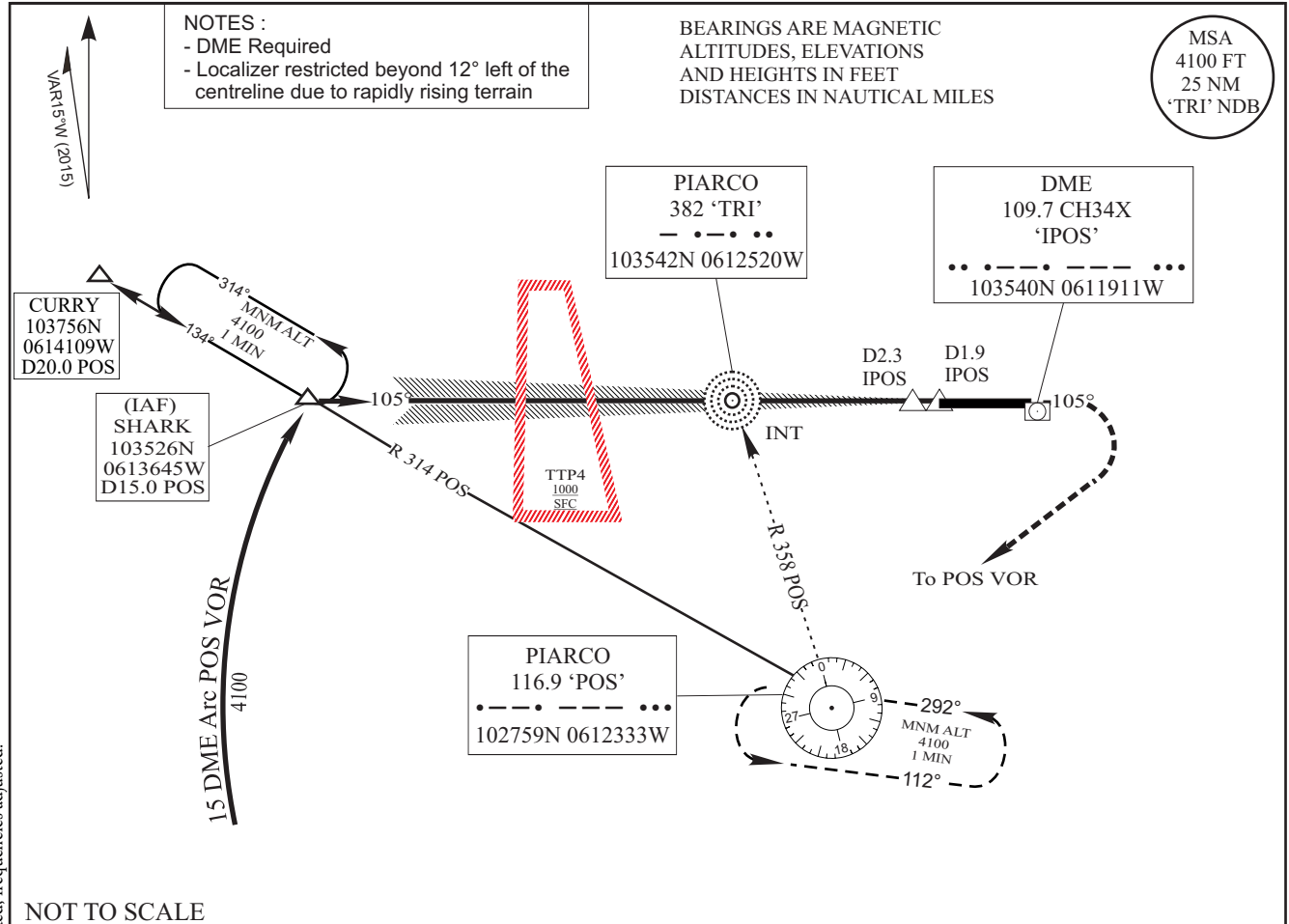


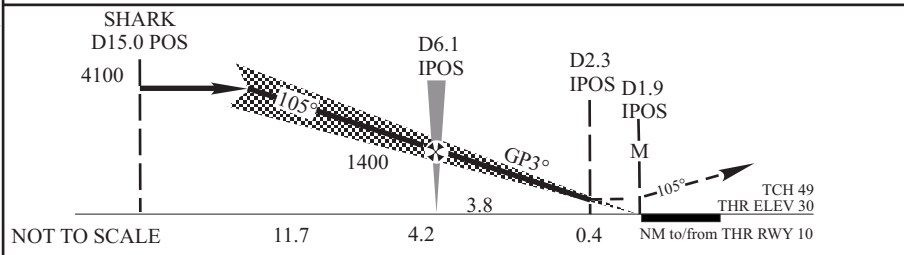
INSTRUMENT APPROACH CHART - ICAO
AERODROME ELEVATION 58 FT
 HEIGHTS RELATED TO
 THR RWY 10 - ELEV 30

APP 119.000, 119.550
 TWR 118.100
 GND 121.900
 ATIS 126.700

**PORT OF SPAIN/
 PIARCO Intl (TTPP)
 VOR/ILS RWY 10**



NOT TO SCALE



TRANSITION LEVEL: FL 55
 TRANSITION ALTITUDE: 4100

MISSED APPROACH:
 Climb to 2200 ft on 105° M then right climbing turn to 4100 ft to POS VOR and hold or as directed by ATC

REMARKS
 DESCENT BELOW 4100 NOT AUTHORISED UNTIL INBOUND ON ILS

OCA (H)		A	B	C	D			
STRAIGHT-IN APPROACH	CAT 1	265 (235)						
	GP INOP	530 (500)						
		Ground Speed (kt)	70	90	100	120	140	160
		Min: Sec	3:36	2:48	2:31	2:06	1:48	1:34
		Rate of Descent (ft/min)	376	484	538	645	753	860

CHANGES: Waypoint CURRY coordinates added, other coordinates adjusted, frequencies adjusted.