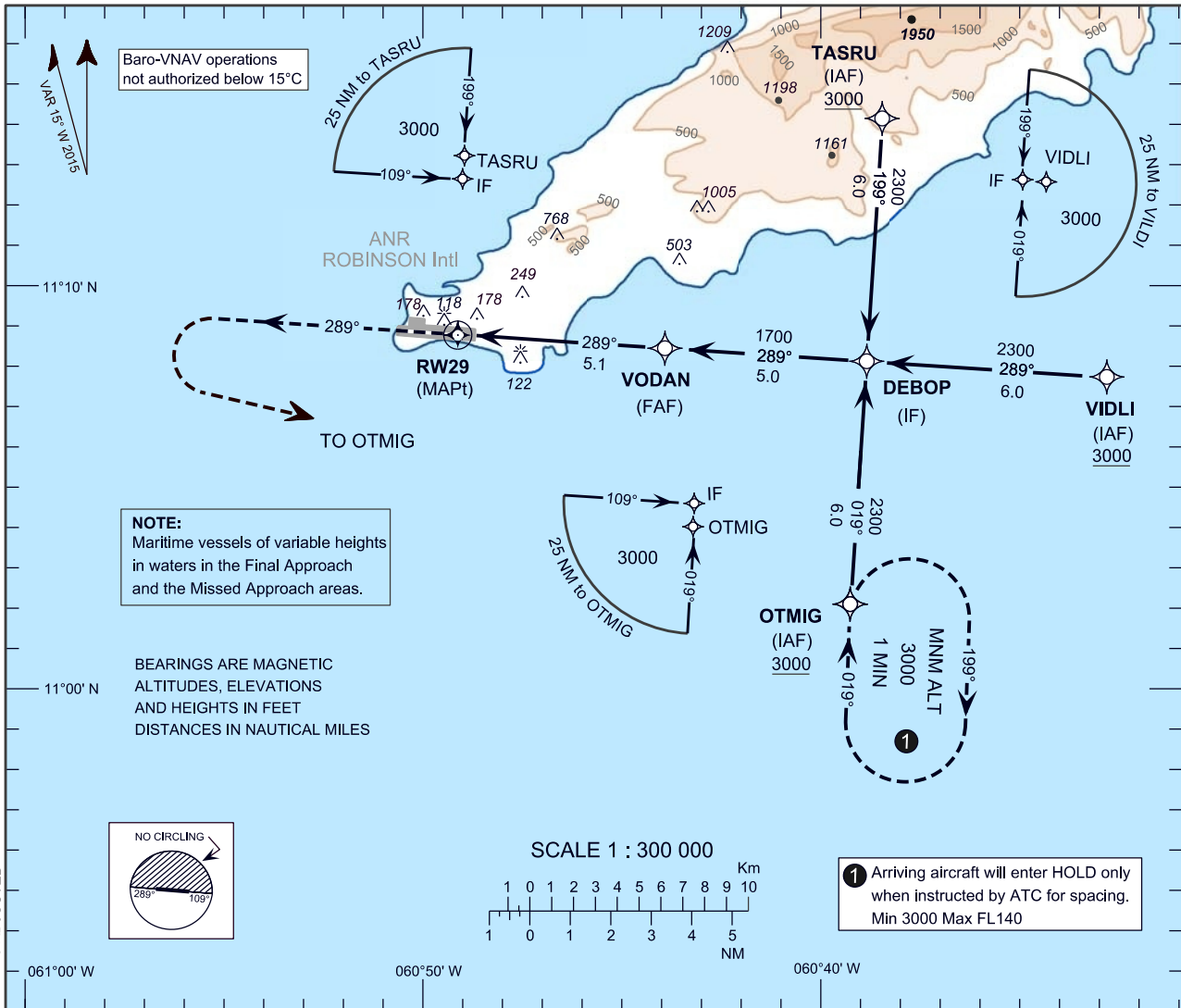


**INSTRUMENT  
APPROACH  
CHART - ICAO**

**AERODROME ELEV 38 ft**  
HEIGHTS RELATED TO  
THR RWY 29 - ELEV 20 ft

PIARCO APP 119.000, 119.550  
ROBINSON TWR 118.400  
ROBINSON ATIS 132.200

**SCARBOROUGH/  
A.N.R. ROBINSON Intl (TTCP)**  
RNAV(GNSS) RWY 29



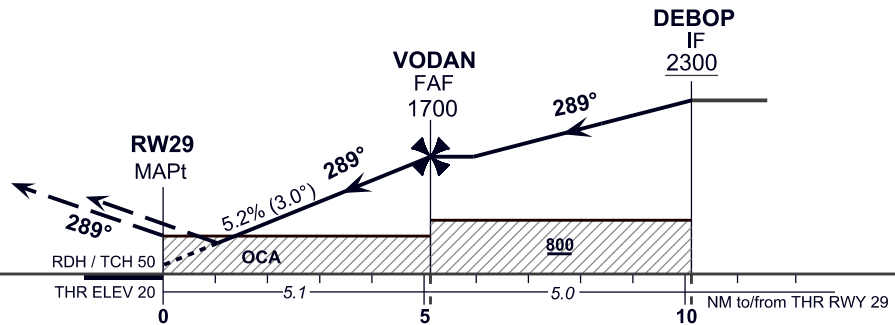
CHANGES: FREQUENCIES ADJUSTED

NM to NEXT WPT	RW29	2	3	4	5
ALTITUDE		710	1030	1350	1670

TRANSITION LEVEL FL 55  
TRANSITION ALTITUDE 4100

**MISSED APPROACH:**

Climb to 1000 on track 289°M then climbing left turn to 3000 direct OTMIG or as directed by ATC.



OCA (OCH)	A	B	C	D
LNAV	500 (480)			
LNAV/VNAV	340 (320)			
*CIRCLING	550	550	650	730
*CIRCLING NOT AUTHORIZED NORTH OF AD (ALL CATs)				

<b>Ground Speed</b>	kt	70	90	100	120	140	160
<b>Rate of descent</b> FAF-MAPt 3.0°(5.2%)	ft/min	372	478	531	637	743	849

**TABULAR DESCRIPTION**

RNAV (GNSS) RWY 29											
Serial Number	Path Descriptor	Waypoint Identifier	Fly Over	Course °M (°T)	Magnetic Variation	Distance (NM)	Turn Direction	Altitude (ft.)	Speed Limit (kt.)	VPA/TCH	Navigation Specification
10	IF	VIDLI	-	-		-	-	+3000	-	-	RNP APCH
20	TF	DEBOP	-	289 (274.2)		6.0	-	+2300	-	-	RNP APCH
10	IF	TASRU	-	-		-	-	+3000	-	-	RNP APCH
20	TF	DEBOP	-	199 (184.2)		6.0	-	+2300	-	-	RNP APCH
10	IF	OTMIG	-	-		-	-	+3000	-	-	RNP APCH
20	TF	DEBOP	-	019 (004.2)		6.0	-	+2300	-	-	RNP APCH
10	IF	DEBOP	-	-		-	-	+2300	-	-	RNP APCH
20	TF	VODAN	-	289 (274.2)		5.0	-	@1700	-	-	RNP APCH
30	TF	RW29	Y	289 (274.2)		5.1	-	@70	-	-3.0/50	RNP APCH
40	CA	-	-	289 (274.2)	+15.0	-	-	+1000	-	-	RNP APCH
50	DF	OTMIG	-	-		-	L	+3000	-	-	RNP APCH
60	HM	OTMIG	-	019 (004.2)		-	R	+3000	-	-	RNP APCH

**WAYPOINT LIST**

RNAV (GNSS) RWY 29	
Waypoint Identifier	Coordinates
VIDLI	11°07'44.00"N 060°32'49.77"W
OTMIG	11°02'10.07"N 060°39'21.77"W
TASRU	11°14'11.41"N 060°38'28.16"W
*DEBOP	11°08'10.74"N 060°38'54.97"W
*VODAN	11°08'32.93"N 060°43'59.32"W
RW29	11°08'55.56"N 060°49'10.92"W

\* previous waypoint identifier with updated coordinates.

Changes: no change