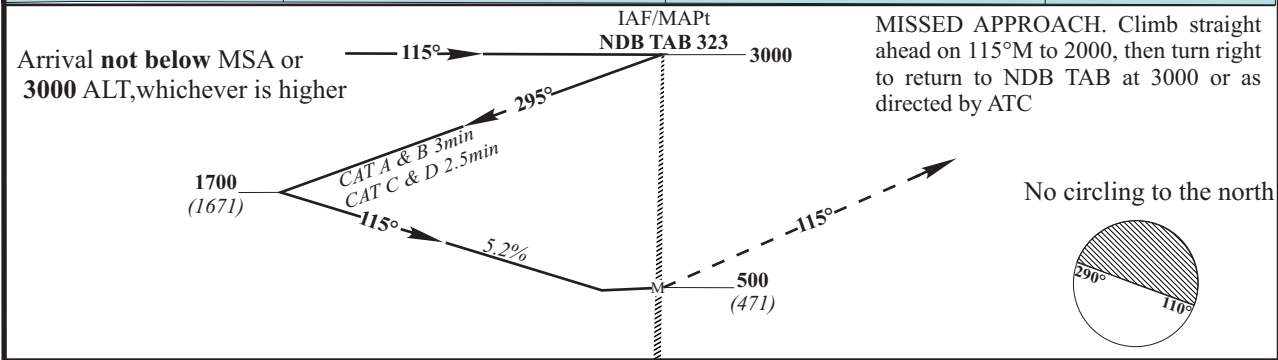
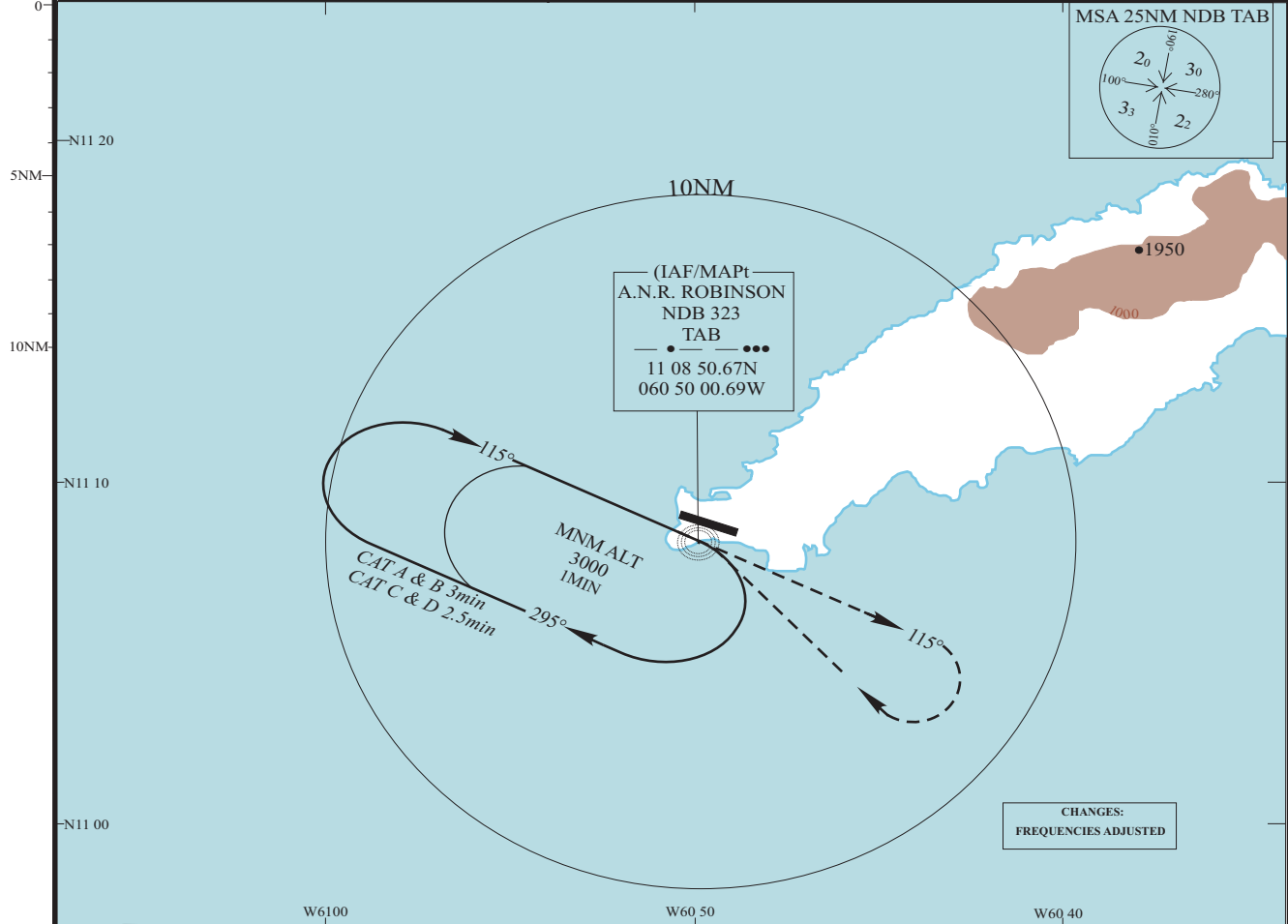


| | | |
|-------------------------------------|--|---|
| INSTRUMENT APPROACH CHART | AERODROME ELEV 38 DISTANCES IN NM ELEVATION IN FEET AMSL HEIGHTS IN FT ABOVE THR 11 | SCARBOROUGH (TOBAGO) A.N.R. ROBINSON INTERNATIONAL NDB RWY 11 |
| TRANSITION ALT 4100 THR ELEV 29 | APP (PIARCO) 119.000, 119.550 ATIS 132.200 TWR 118.400 GND 121.700 | ACFT CAT A,B,C,D |
| BEARINGS ARE MAGNETIC VAR 15°W | | |



| OCA/H | CAT A | CAT B | CAT C | CAT D | GROUNDSPEED-DESCENT RATE | | | | | | |
|-----------|-----------|-----------|-----------|-----------|--------------------------|-----|-----|-----|-----|-----|-----|
| PROCEDURE | 500 (471) | 500 (471) | 500 (471) | 500 (471) | KNOTS | 70 | 90 | 100 | 120 | 140 | 160 |
| VM(C) | 538 (500) | 538 (500) | 638 (600) | 738 (700) | FT/MIN | 372 | 478 | 531 | 637 | 743 | 849 |

Notes: 1) FAT offset by 6°.
2) FAT intercepts RWY CL at 0.8NM from THR
3) Not all obstacles shown on plan view