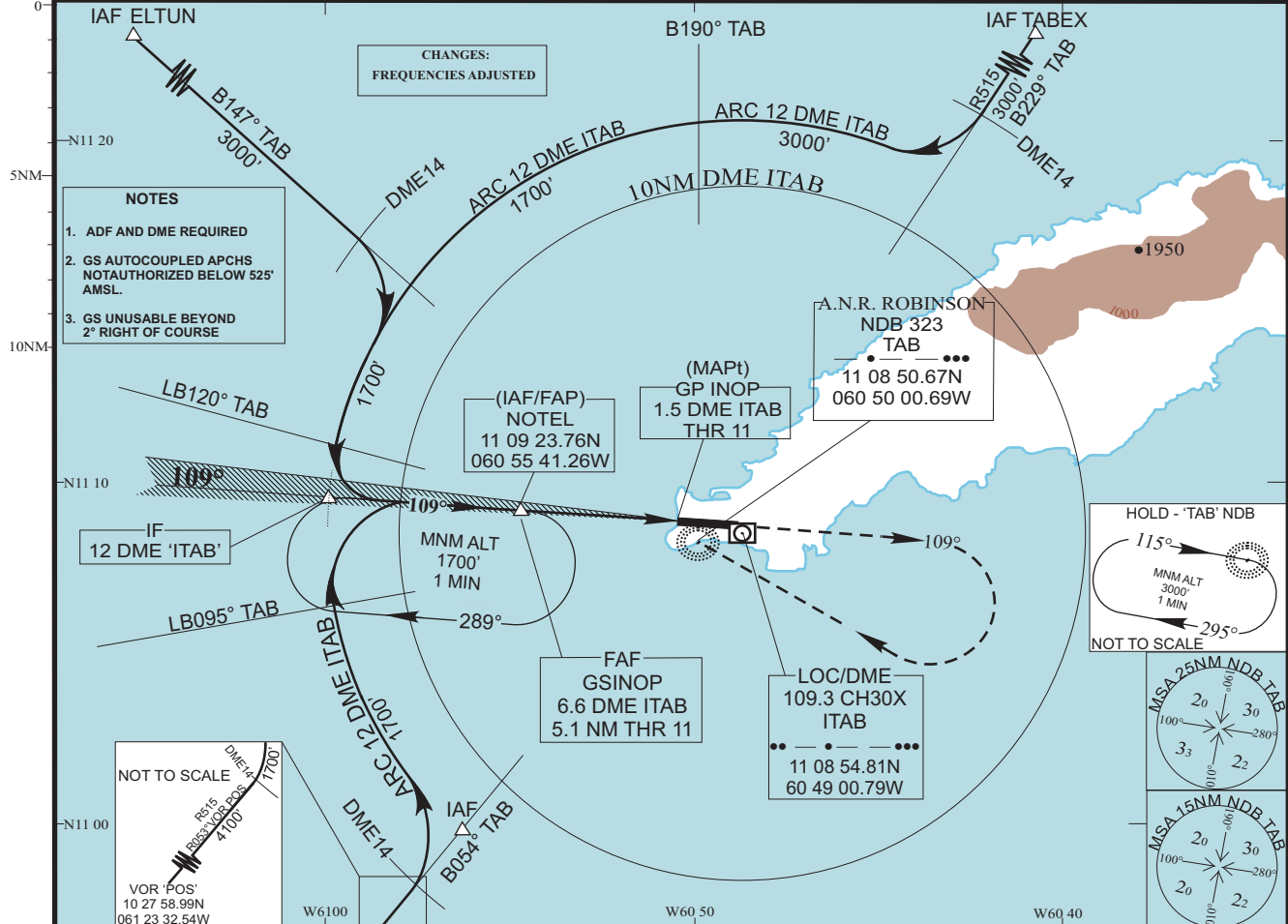
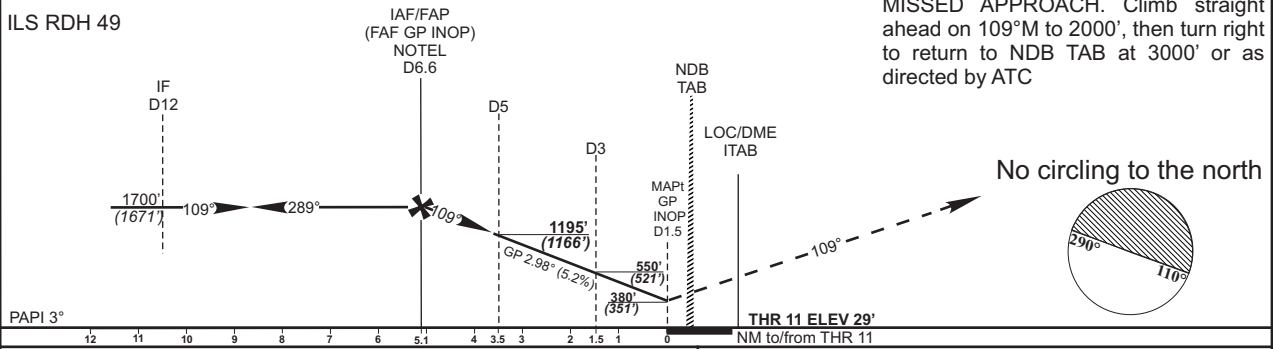


<b>INSTRUMENT APPROACH CHART</b>	AERODROME ELEV 38 DISTANCES IN NM ELEVATION IN FEET AMSL HEIGHTS IN FT ABOVE THR 11	<b>SCARBOROUGH (TOBAGO)</b> A.N.R. ROBINSON INTERNATIONAL ILS Z OR LOC Z RWY 11
TRANSITION ALT 4100 THR11 ELEV 29	APP (PIARCO) 119.000, 119.550 ATIS 132.200 TWR 118.400 GND 121.700	ACFT CAT A,B,C,D
BEARINGS ARE MAGNETIC VAR 15°W		



NOTE ADF AND DME REQUIRED



OCA					G/S INOP (Recommended descent 320ft per NM)							
ACFT CAT	A	B	C	D	DME ITAB DIST	6	5	4	3			
ILS	CAT 1	250 (221)	260 (231)	266 (237)	276 (247)	THR 11 DIST	4.5	3.5	2.5	1.5		
	GP INOP	380 (351)	380 (351)	380 (351)	380 (351)	ALT/(HEIGHT)	1510(1481)	1190(1161)	870(841)	550(521)		
VMC	NOT AUTHORISED					KTS	80	100	120	140	160	
	NORTH RWY 11					FAF - MAPt	MIN:SEC	3:50	3:04	2:33	2:12	1:55
	SOUTH RWY 11	538 (500)	538 (500)	638 (600)	738 (700)	RATE OF DESCENT	FT/MIN	420	530	640	740	850

<b>TTCP ILS Z OR LOC Z RWY 11 AERONAUTICAL DATA</b>			
<b>FIX DATA</b>			
<b>Type Data</b>	<b>Fix Name</b>	<b>Distance ITAB DME</b>	<b>Fix Coordinates</b>
<i>Enroute</i>	POS VOR	53.11 NM	10° 27' 58.99" N 61° 23' 32.54" W
<i>Enroute</i>	TAB NDB	1.03 NM	11° 08' 50.68" N 60° 50' 00.69" W
<i>IAF</i>	ELTUN	34.58 NM	11° 31' 47.12" N 61° 15' 30.05" W
<i>IAF</i>	TABEX	30.26 NM	11° 34' 24.36" N 60° 32' 14.19" W
<i>IAF</i>	NOTEL	6.62 NM	11° 09' 23.76" N 60° 55' 41.26" W
<i>IAF</i>	S end DME ARC	12.00 NM	11° 00' 04.22" N 60° 57' 13.74" W
	TABEX 12 DME ARC	12.00 NM	11° 19' 18.78" N 60° 42' 44.39" W
	ELTUN 12 DME ARC	12.00 NM	11° 16' 29.42" N 60° 58' 29.69" W
<i>IF</i>	12 DME ITAB	12.00 NM	11° 09' 47.41" N 61° 01' 08.96" W
<i>FAF</i>	NOTEL	6.62 NM	11° 09' 23.76" N 60° 55' 41.26" W
<i>MAPt</i>	DTHR RWY 11	1.53 NM	11° 09' 01.39" N 60° 50' 31.40" W
<i>DME</i>	ITAB	-	11° 08' 56.82" N 60° 48' 58.32" W
<b>SEGMENT DATA</b>			
<b>From</b>	<b>To</b>	<b>Distance</b>	<b>Magnetic Bearing</b>
<i>POS VOR</i>	IAF S end DME ARC	41.11 NM	053.97
<i>ELTUN</i>	12 DME ARC	22.60 NM	147.32
<i>TABEX</i>	12 DME ARC	18.22 NM	229.49
<i>IF</i>	NOTEL	5.38 NM	109.03
<i>NOTEL</i>	MAPt 1.5 DME ITAB	5.09 NM	109.04
<i>NOTEL</i>	DTHR RWY 11	5.09 NM	109.04
<b>OTHER DATA</b>			
- <b>Aerodrome Elevation:38'</b>			
- <b>Displaced Threshold RWY 11 elevation; 29'</b>			
- <b>Magnetic Variation: 14.87</b>			
- <b>Distance TAB NDB to ITAB DME: 1.03 NM</b>			
- <b>Magnetic Bearing TAB NDB to/ from ITAB DME 99.18/279.18</b>			
- <b>Displaced Threshold RWY 11 to TAB NDB:0.53 NM</b>			
- <b>Final Approach Descent Angle: 2.98°</b>			

Changes: no change