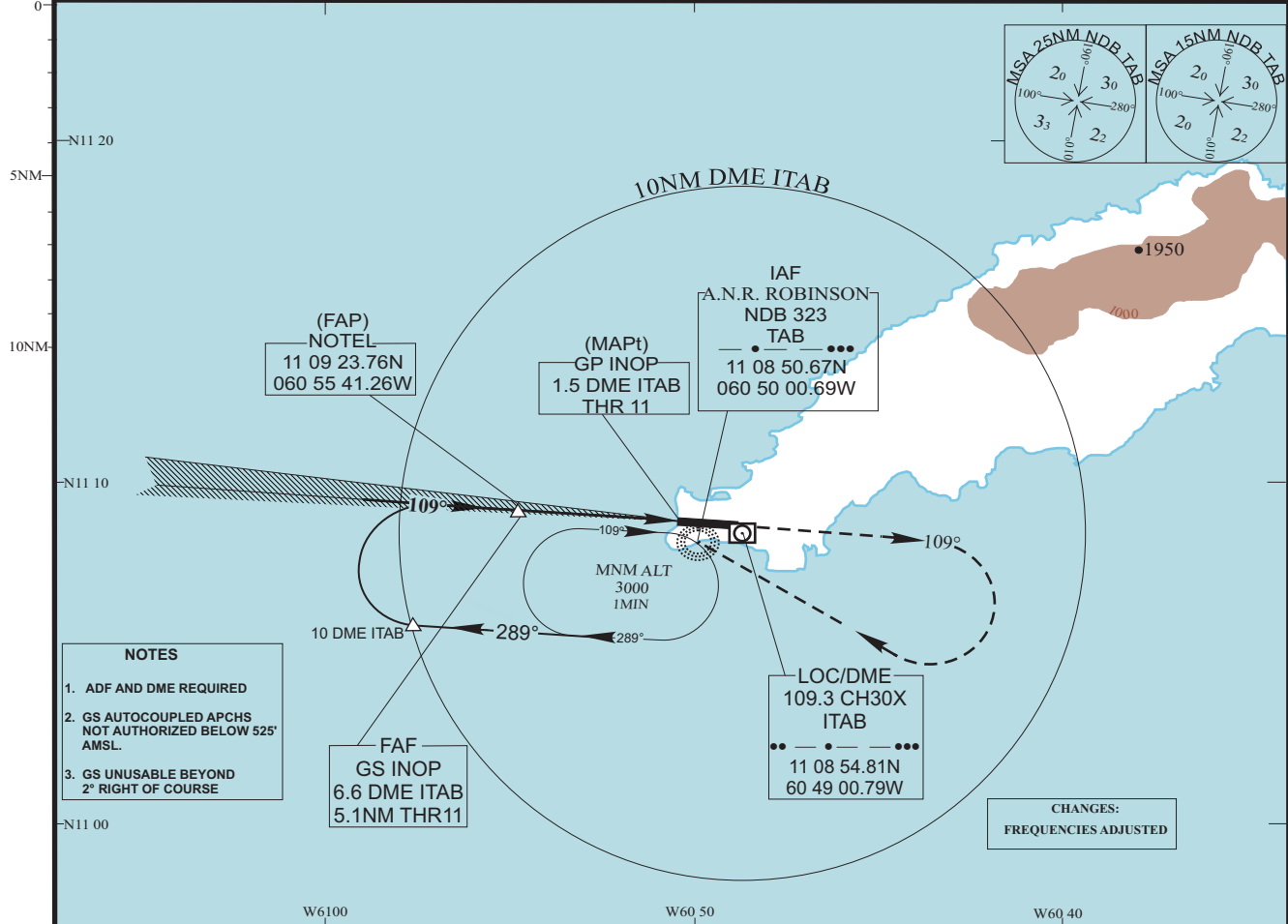
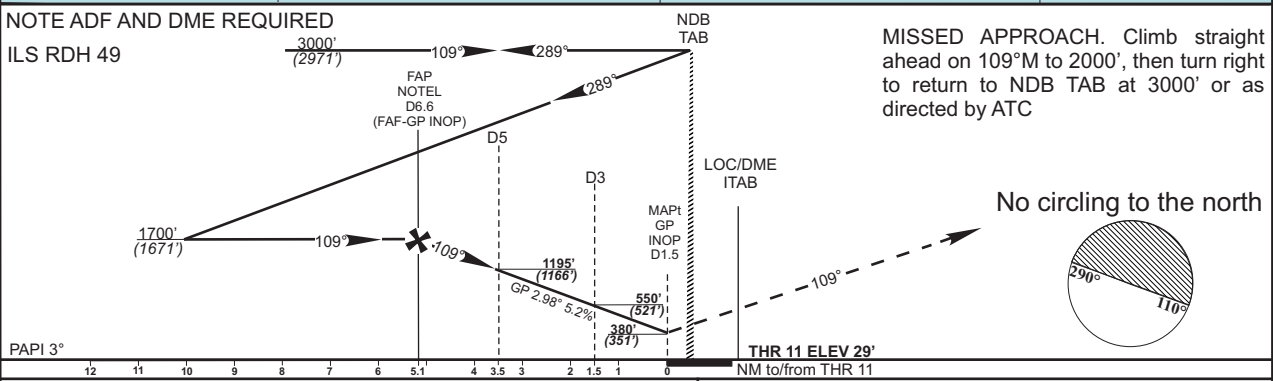


| | | |
|--------------------------------------|----------------------------------------------------------------------------------------------|----------------------------------------------------------------------------------------------|
| INSTRUMENT APPROACH CHART | AERODROME ELEV 38 DISTANCES IN NM ELEVATION IN FEET AMSL HEIGHTS IN FT ABOVE THR 11 | SCARBOROUGH (TOBAGO) A.N.R. ROBINSON INTERNATIONAL ILS Y OR LOC Y RWY 11 |
| TRANSITION ALT 4100 THR11 ELEV 29 | APP (PIARCO) 119.000, 119.550 ATIS 132.200 TWR 118.400 GND 121.700 | ACFT CAT A,B,C,D |
| BEARINGS ARE MAGNETIC VAR 15°W | | |



- NOTES**
1. ADF AND DME REQUIRED
 2. GS AUTOCOUPLED APCHS NOT AUTHORIZED BELOW 525' AMSL.
 3. GS UNUSABLE BEYOND 2° RIGHT OF COURSE

NOTE ADF AND DME REQUIRED
ILS RDH 49



| | | | | | | | | | | | |
|----------|--------------|----------------|-----------|-----------|---------------------------------------------|--------------|------------|------------|----------|----------|------|
| OCA | | | | | G/S INOP (Recommended descent 320ft per NM) | | | | | | |
| ACFT CAT | A | B | C | D | DME ITAB DIST | 6 | 5 | 4 | 3 | | |
| ILS | CAT 1 | 250 (221) | 260 (231) | 266 (237) | 276 (247) | THR 11 DIST | 4.5 | 3.5 | 2.5 | 1.5 | |
| | GP INOP | 380 (351) | 380 (351) | 380 (351) | 380 (351) | ALT/(HEIGHT) | 1510(1481) | 1190(1161) | 870(841) | 550(521) | |
| VMC | NORTH RWY 11 | NOT AUTHORISED | | | | KTS | 80 | 100 | 120 | 140 | 160 |
| | SOUTH RWY 11 | 538 (500) | 538 (500) | 638 (600) | 738 (700) | FAF - MAPt | MIN:SEC | 3:50 | 3:04 | 2:33 | 2:12 |
| | | | | | RATE OF DESCENT | FT/MIN | 420 | 530 | 640 | 740 | 850 |

TTCP ILS Y OR LOC Y RWY 11 AERONAUTICAL DATA

FIX DATA

| Type Data | Fix Name | Distance ITAB DME | Fix Coordinates |
|------------------|-----------------|--------------------------|-----------------------------------|
| <i>IAF</i> | TAB NDB | 1.03 NM | 11° 08' 50.68" N 60° 50' 00.69" W |
| <i>FAP/FAF</i> | NOTEL | 6.62 NM | 11° 09' 23.76" N 60° 55' 41.26" W |
| <i>MAPt</i> | DTHR RWY 11 | 1.53 NM | 11° 09' 01.39" N 60° 50' 31.40" W |
| <i>DME</i> | ITAB | - | 11° 08' 56.82" N 60° 48' 58.32" W |

OTHER DATA

- **Aerodrome Elevation: 38'**
- **Displaced Threshold RWY 11 elevation; 29'**
- **Magnetic Variation: 14.87**
- **Distance TAB NDB to ITAB DME: 1.03 NM**
- **Magnetic Bearing TAB NDB to/ from ITAB DME 99.18/279.18**
- **Displaced Threshold RWY 11 to TAB NDB: 0.53 NM**
- **Final Approach Descent Angle: 2.98°**

Changes: no change