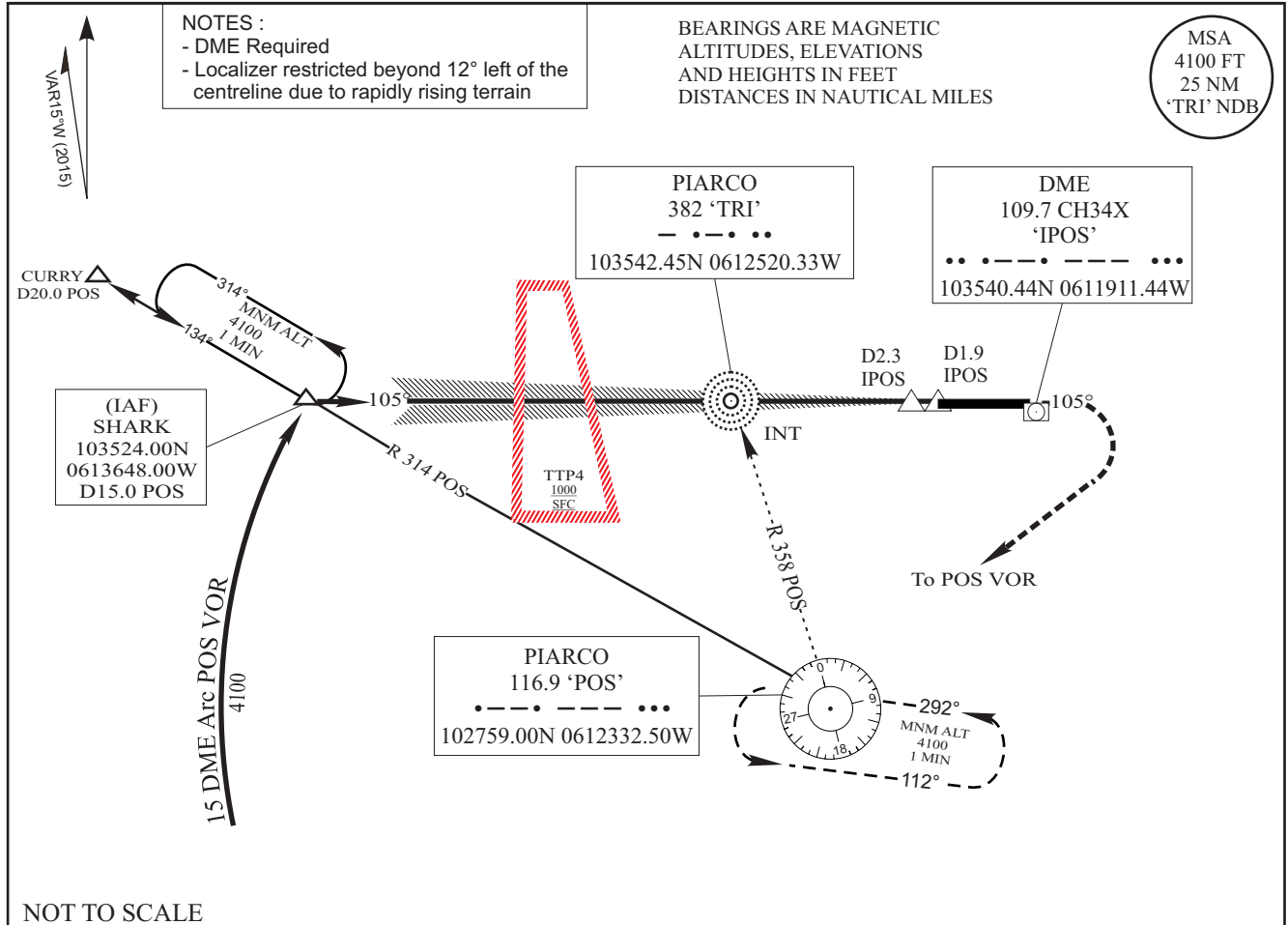


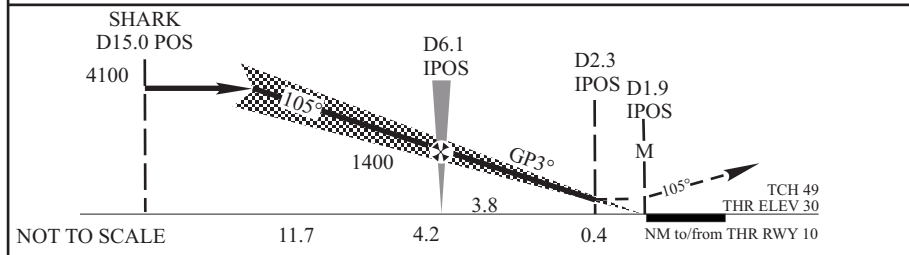
INSTRUMENT APPROACH CHART - ICAO
AERODROME ELEVATION 58 FT
HEIGHTS RELATED TO
THR RWY 10 - ELEV 30

APP 119.0, 119.55
TWR 118.1
GND 121.9
ATIS 126.7

**PORT OF SPAIN/
PIARCO Intl (TTPP)
VOR/ILS RWY 10**



NOT TO SCALE



TRANSITION LEVEL: FL 55
TRANSITION ALTITUDE: 4100
MISSED APPROACH:
Climb to 2200 ft on 105° M then right climbing turn to 4100 ft to POS VOR and hold or as directed by ATC
REMARKS
DESCENT BELOW 4100 NOT AUTHORISED UNTIL INBOUND ON ILS

OCA (H)		A	B	C	D			
STRAIGHT-IN APPROACH	CAT 1	265 (235)						
	GP INOP	530 (500)						
CHANGES:								
<ul style="list-style-type: none"> - MAG VAR changed - LOM and MM replaced by DME Distances - Required Aircraft Equipage - Localizer Restriction 		Ground Speed (kt)	70	90	100	120	140	160
		Min: Sec	3:36	2:48	2:31	2:06	1:48	1:34
		Rate of Descent (ft/min)	376	484	538	645	753	860