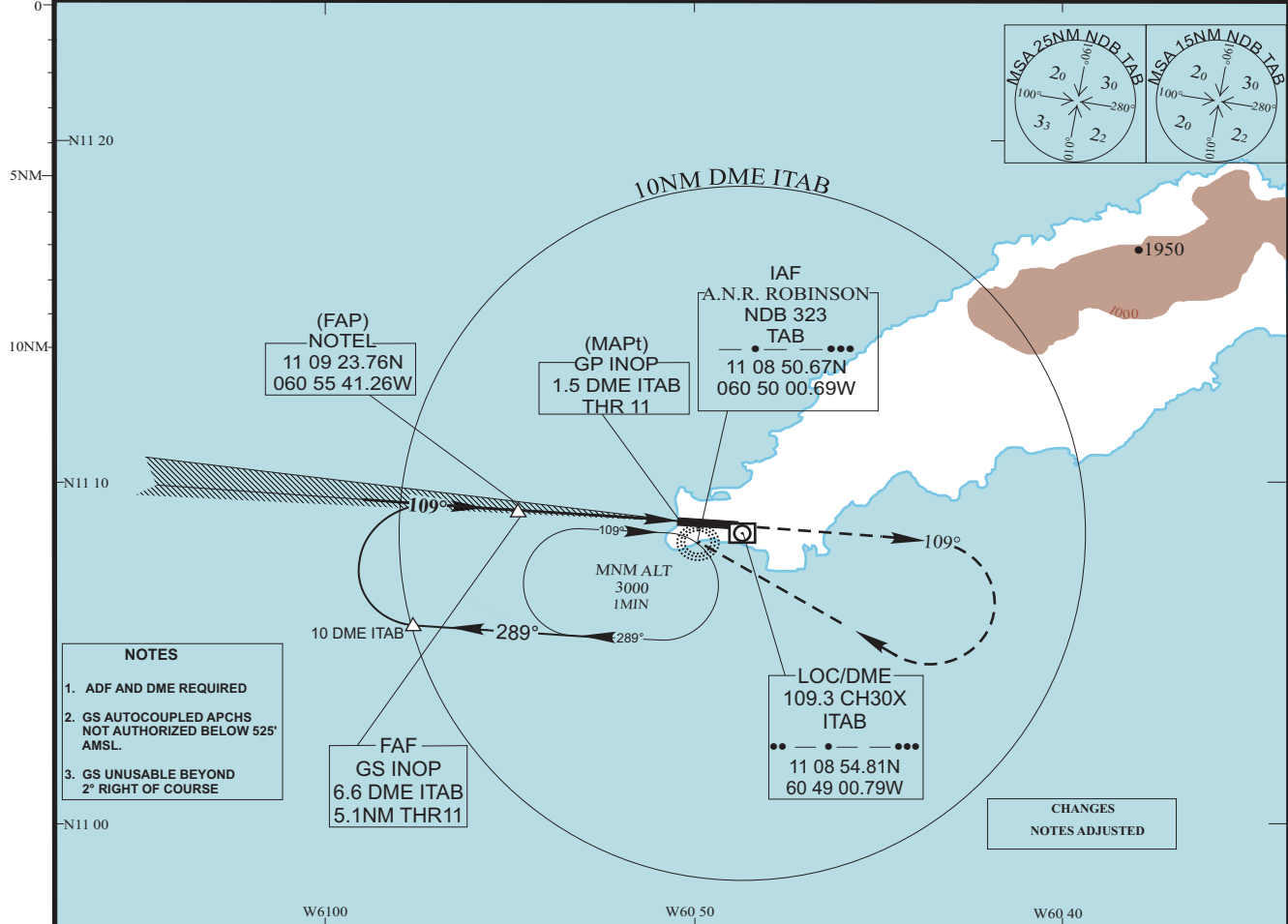


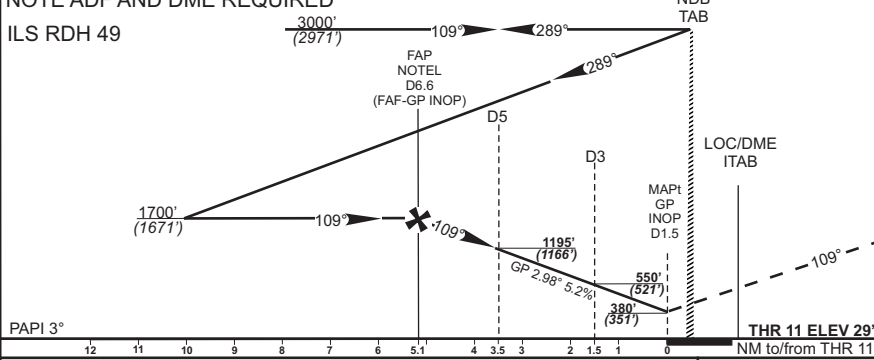
INSTRUMENT APPROACH CHART	AERODROME ELEV 38 DISTANCES IN NM ELEVATION IN FEET AMSL HEIGHTS IN FT ABOVE THR 11	SCARBOROUGH (TOBAGO) A.N.R. ROBINSON INTERNATIONAL ILS Y OR LOC Y RWY 11
TRANSITION ALT 4100 THR11 ELEV 29	APP (PIARCO) 119.0, 119.55 ATIS 132.20 TWR 118.4 GND 121.7	ACFT CAT A,B,C,D
BEARINGS ARE MAGNETIC VAR 15°W		



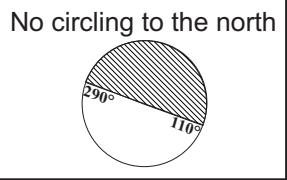
- NOTES**
- ADF AND DME REQUIRED
 - GS AUTOCOUPLED APCHS NOT AUTHORIZED BELOW 525' AMSL.
 - GS UNUSABLE BEYOND 2° RIGHT OF COURSE

CHANGES
NOTES ADJUSTED

NOTE ADF AND DME REQUIRED
ILS RDH 49



MISSED APPROACH. Climb straight ahead on 109°M to 2000', then turn right to return to NDB TAB at 3000' or as directed by ATC



OCA					G/S INOP (Recommended descent 320ft per NM)						
ACFT CAT	A	B	C	D	DME ITAB DIST	6	5	4	3		
ILS	CAT 1	250 (221)	260 (231)	266 (237)	276 (247)	THR 11 DIST	4.5	3.5	2.5	1.5	
	GP INOP	380 (351)	380 (351)	380 (351)	380 (351)	ALT/(HEIGHT)	1510(1481)	1190(1161)	870(841)	550(521)	
VMC	NORTH RWY 11	NOT AUTHORISED				KTS	80	100	120	140	160
	SOUTH RWY 11	538 (500)	538 (500)	638 (600)	738 (700)	FAF - MAPt	MIN:SEC	3:50	3:04	2:33	2:12
					RATE OF DESCENT	FT/MIN	420	530	640	740	850

TTCP ILS Y OR LOC Y RWY 11 AERONAUTICAL DATA

FIX DATA

Type Data	Fix Name	Distance ITAB DME	Fix Coordinates
<i>IAF</i>	TAB NDB	1.03 NM	11° 08' 50.68" N 60° 50' 00.69" W
<i>FAP/FAF</i>	NOTEL	6.62 NM	11° 09' 23.76" N 60° 55' 41.26" W
<i>MAPt</i>	DTHR RWY 11	1.53 NM	11° 09' 01.39" N 60° 50' 31.40" W
<i>DME</i>	ITAB	-	11° 08' 56.82" N 60° 48' 58.32" W

OTHER DATA

- **Aerodrome Elevation: 38'**
- **Displaced Threshold RWY 11 elevation; 29'**
- **Magnetic Variation: 14.87**
- **Distance TAB NDB to ITAB DME: 1.03 NM**
- **Magnetic Bearing TAB NDB to/ from ITAB DME 99.18/279.18**
- **Displaced Threshold RWY 11 to TAB NDB: 0.53 NM**
- **Final Approach Descent Angle: 2.98°**