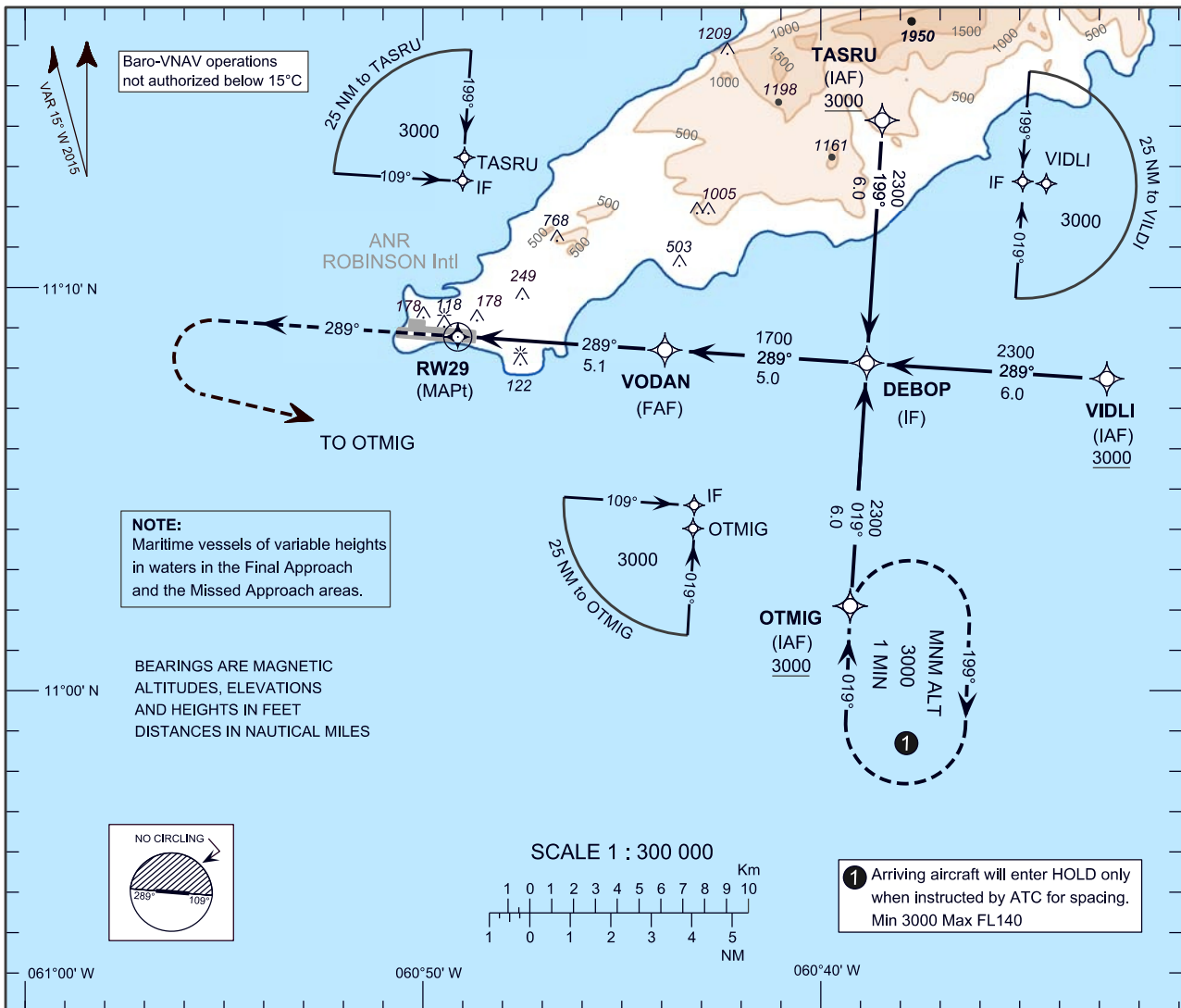


**INSTRUMENT
APPROACH
CHART - ICAO**

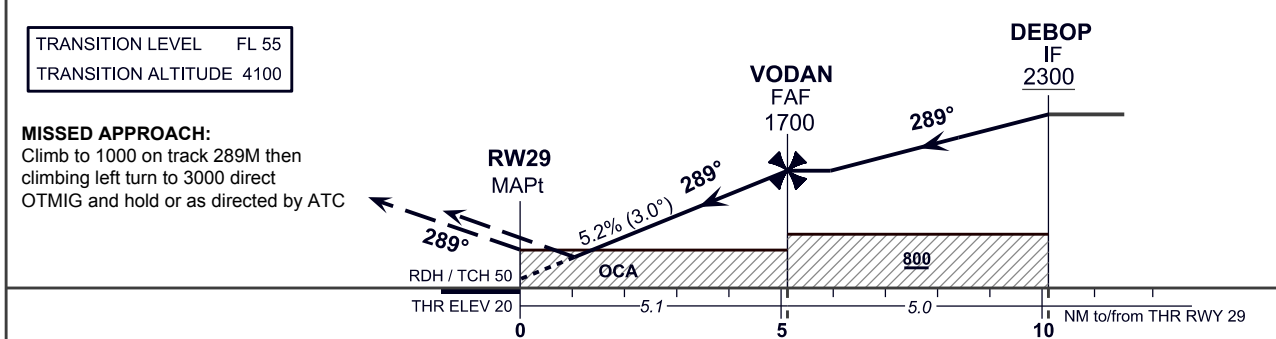
AERODROME ELEV 38 ft
HEIGHTS RELATED TO
THR RWY 29 - ELEV 20 ft

PIARCO APP 119.0, 119.55
ROBINSON TWR 118.4
ROBINSON ATIS 132.2

**SCARBOROUGH/
A.N.R. ROBINSON Intl (TTCP)**
RNAV(GNSS) RWY 29



NM to NEXT WPT	RW29	2	3	4	5
ALTITUDE		710	1030	1350	1670



TRANSITION LEVEL	FL 55			
TRANSITION ALTITUDE	4100			
MISSED APPROACH:	Climb to 1000 on track 289M then climbing left turn to 3000 direct OTMIG and hold as directed by ATC			
OCA (OCH)	A	B	C	D
LNAV	500 (480)			
LNAV/VNAV	340 (320)			
*CIRCLING	550	550	650	730
*CIRCLING NOT AUTHORIZED NORTH OF AD (ALL CATs)				

Ground Speed	kt	70	90	100	120	140	160
Rate of descent	ft/min	372	478	531	637	743	849

TABULAR DESCRIPTION

RNAV (GNSS) RWY 29											
Serial Number	Path Descriptor	Waypoint Identifier	Fly Over	Course °M (°T)	Magnetic Variation	Distance (NM)	Turn Direction	Altitude (ft.)	Speed Limit (kt.)	VPA/TCH	Navigation Specification
10	IF	VIDLI	-	-		-	-	+3000	-	-	RNP APCH
20	TF	DEBOP	-	289 (274.2)		6.0	-	+2300	-	-	RNP APCH
10	IF	TASRU	-	-		-	-	+3000	-	-	RNP APCH
20	TF	DEBOP	-	199 (184.2)		6.0	-	+2300	-	-	RNP APCH
10	IF	OTMIG	-	-		-	-	+3000	-	-	RNP APCH
20	TF	DEBOP	-	019 (004.2)		6.0	-	+2300	-	-	RNP APCH
10	IF	DEBOP	-	-		-	-	+2300.	-	-	RNP APCH
20	TF	VODAN	-	289 (274.2)		5.0	-	@1700	-	-	RNP APCH
30	TF	RW29	Y	289 (274.2)		5.1	-	@70	-	-3.0/50	RNP APCH
40	CA	-	-	289 (274.2)	+15.0	-	-	+1000	-	-	RNP APCH
50	DF	OTMIG	-	-		-	L	+3000	-	-	RNP APCH
60	HM	OTMIG	-	019 (004.2)		-	R	+3000	-	-	RNP APCH

WAYPOINT LIST

RNAV (GNSS) RWY 29	
Waypoint Identifier	Coordinates
VIDLI	11°07'44.00"N 060°32'49.77"W
OTMIG	11°02'10.07"N 060°39'21.77"W
TASRU	11°14'11.41"N 060°38'28.16"W
*DEBOP	11°08'10.74"N 060°38'54.97"W
*VODAN	11°08'32.93"N 060°43'59.32"W
RW29	11°08'55.56"N 060°49'10.92"W

* previous waypoint identifier with updated coordinates.