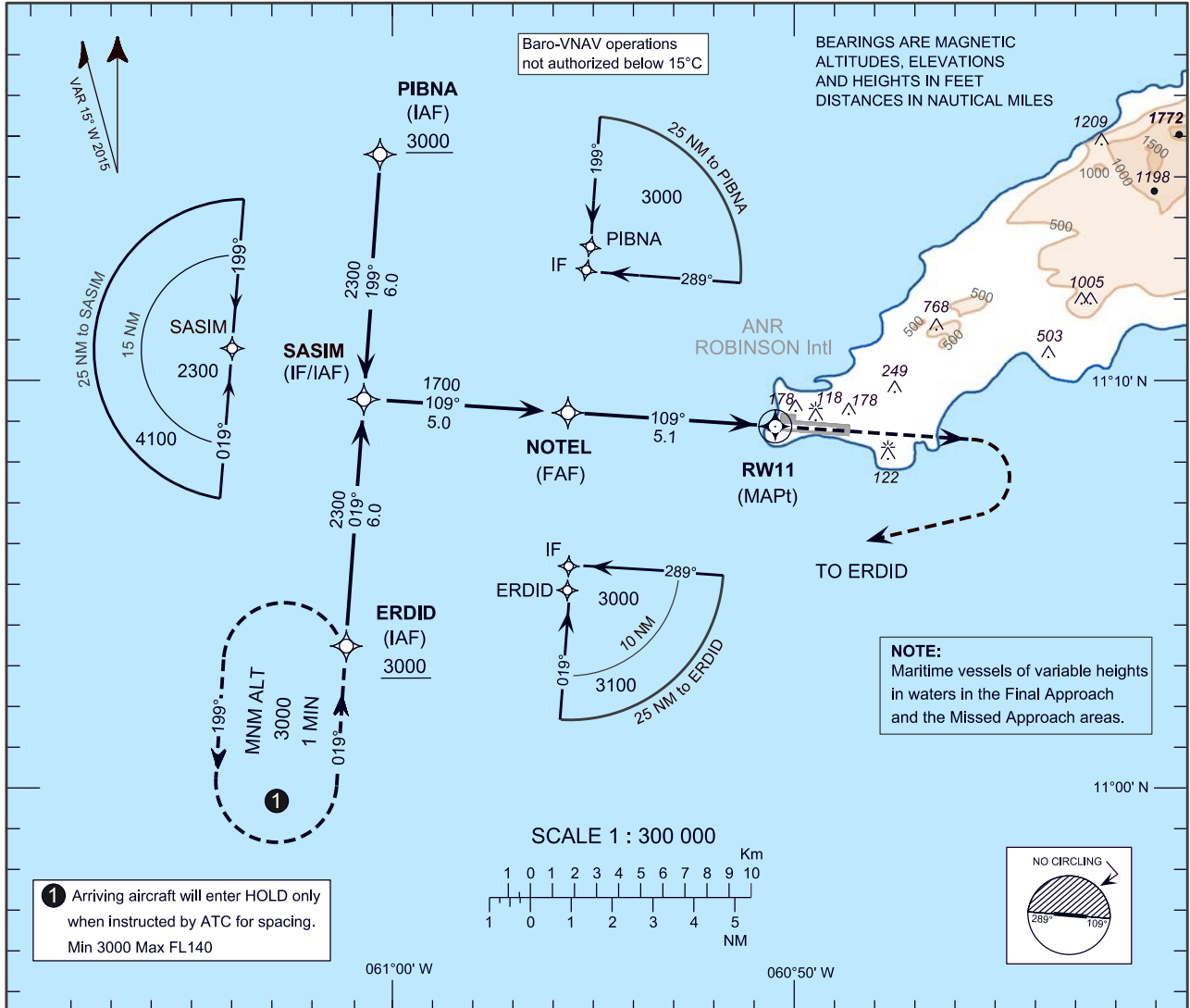


**INSTRUMENT
APPROACH
CHART - ICAO**

AERODROME ELEV 38 ft
HEIGHTS RELATED TO
DISP THR RWY 11- ELEV 29 ft

PIARCO APP 119.0, 119.55
ROBINSON TWR 118.4
ROBINSON ATIS 132.2

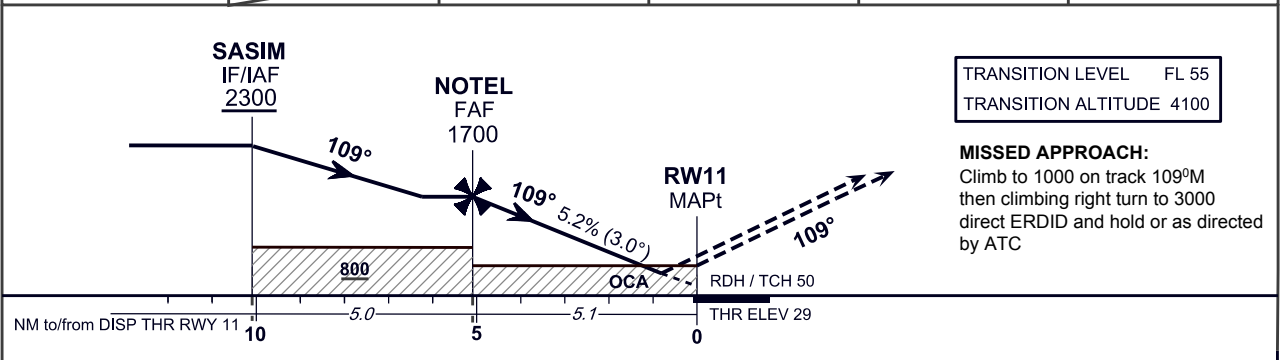
**SCARBOROUGH/
A.N.R. ROBINSON Intl (TTCP)**
RNAV_(GNSS) RWY 11



① Arriving aircraft will enter HOLD only when instructed by ATC for spacing.
Min 3000 Max FL140

NOTE:
Maritime vessels of variable heights in waters in the Final Approach and the Missed Approach areas.

NM to NEXT WPT	RW11	2	3	4	5
ALTITUDE		720	1040	1360	1680



TRANSITION LEVEL FL 55
TRANSITION ALTITUDE 4100

MISSED APPROACH:
Climb to 1000 on track 109°M then climbing right turn to 3000 direct ERDID and hold or as directed by ATC

OCA (OCH)	A	B	C	D
LNAV	500 (471)			
LNAV/VNAV	340 (311)			
*CIRCLING	550	550	650	730
*CIRCLING NOT AUTHORIZED NORTH OF AD (ALL CATs)				

Ground Speed	kt	70	90	100	120	140	160
Rate of descent FAF-MAPt 3.0°(5.2%)	ft/min	372	478	531	637	743	849

TABULAR DESCRIPTION

RNAV _(GNSS) RWY 11											
Serial Number	Path Descriptor	Waypoint Identifier	Fly Over	Course °M (°T)	Magnetic Variation	Distance (NM)	Turn Direction	Altitude (ft)	Speed Limit (kt)	VPA/TCH	Navigation Specification
10	IF	ERDID	-	-	-	-	-	+3000	-	-	RNP APCH
20	TF	SASIM	-	019 (004.2)	-	6.0	-	+2300	-	-	RNP APCH
10	IF	PIBNA	-	-	-	-	-	+3000	-	-	RNP APCH
20	TF	SASIM	-	199 (184.2)	-	6.0	-	+2300	-	-	RNP APCH
10	IF	SASIM	-	-	-	-	-	+2300	-	-	RNP APCH
20	TF	NOTEL	-	109 (094.2)	-	5.0	-	@1700	-	-	RNP APCH
30	TF	RW11	Y	109 (094.2)	-	5.1	-	@79	-	-3.0/50	RNP APCH
40	CA	-	-	109 (094.2)	+15.0	-	-	+1000	-	-	RNP APCH
50	DF	ERDID	-	-	-	-	R	+3000	-	-	RNP APCH
60	HM	ERDID	-	019 (004.2)	-	-	L	+3000	-	-	RNP APCH

WAYPOINT LIST

RNAV _(GNSS) RWY 11	
Waypoint Identifier	Coordinates
ERDID	11°03'45.02"N 061°01'12.49"W
PIBNA	11°15'46.36"N 061°00'18.93"W
*SASIM	11°09'45.69"N 061°00'45.72"W
*NOTEL	11°09'23.78"W 060°55'41.33"W
RW11	11°09'01.39"N 060°50'31.40"W

* previous waypoint identifier with updated coordinates.