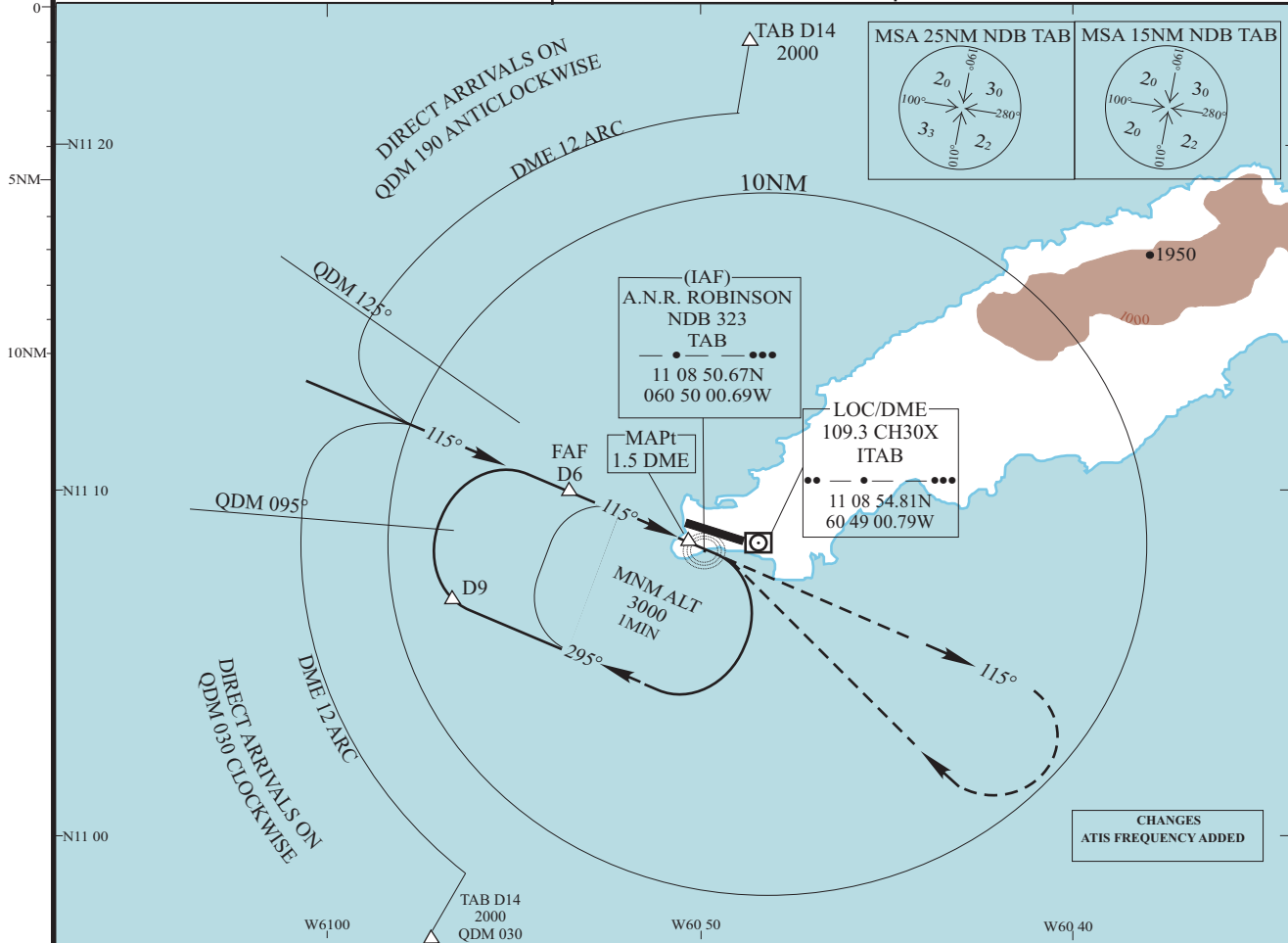


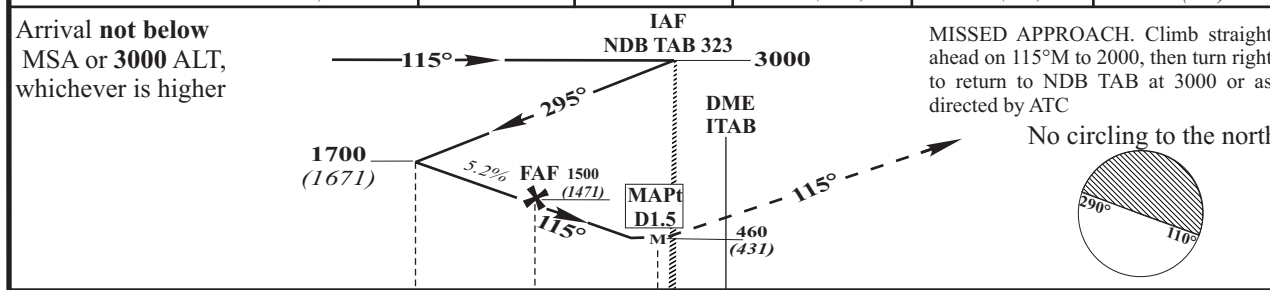
AD 2.10-2-24
23 JUL 15

AIP
EASTERN CARIBBEAN

INSTRUMENT APPROACH CHART	AERODROME ELEV 38 DISTANCES IN NM ELEVATION IN FEET AMSL HEIGHTS IN FT ABOVE THR 11	SCARBOROUGH (TOBAGO) A.N.R. ROBINSON INTERNATIONAL NDB/DME RWY 11
TRANSITION ALT 4100 THR ELEV 29	APP (PIARCO) 119.0, 119.55 ATIS 132.20 TWR 118.4 GND 121.7	ACFT CAT A,B,C,D
BEARINGS ARE MAGNETIC VAR 15°W		



RECOMMENDED PROFILE	DME ITAB	6	5	4	3
NOMINAL FINAL APCH GRADIENT 5.2%, 320 FT/NM	ALT/HEIGHT	1500 (1471)	1180 (1151)	860 (831)	540 (511)



OCA/H	CAT A	CAT B	CAT C	CAT D	Notes: 1) FAT offset by 6°. 2) FAT intercepts RWY CL at 2.3 DME ITAB or 0.8NM from THR RWY 11 3) Not all obstacles shown on plan view
PROCEDURE	460 (431)	460 (431)	460 (431)	460 (431)	
VM(C)	538 (500)	538 (500)	638 (600)	738 (700)	

Arrivals (QDM 190° anticlockwise). When cleared by ATC, establish inbound to NDB TAB not below MSA. After passing DME ITAB 14, turn right to establish on DME ITAB 12 arc anticlockwise, descend to 2000. After passing lead NDB TAB QDM 125°, turn left to establish on extended FAT, continue as for main procedure.

Arrivals (QDM 030° clockwise). When cleared by ATC, establish inbound to NDB TAB not below MSA. After passing DME ITAB 14, turn left to establish on DME ITAB 12 arc clockwise, descend to 2000. After passing lead NDB TAB QDM 095°, turn right to establish on extended FAT, continue as for main procedure.